

GOBI BRONCO 4 DOOR HARD TOP ROOF RACK MOLLE PANEL INSTALLATION INSTRUCTIONS

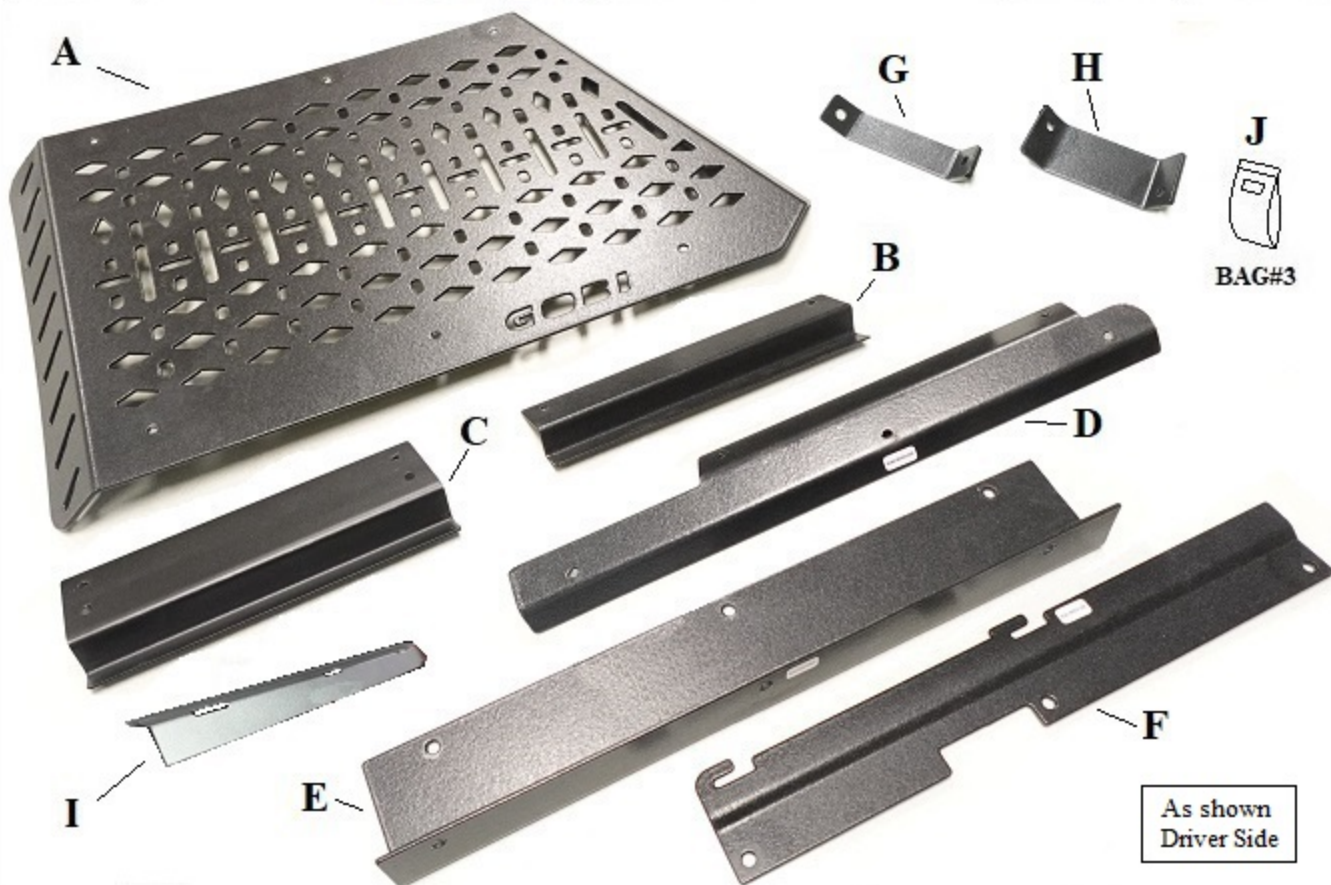
Guidelines:

When using Load Carriers and Accessories, the user must understand the precautions. The points listed below will assist you in using the rack /carrier system and will encourage safety.

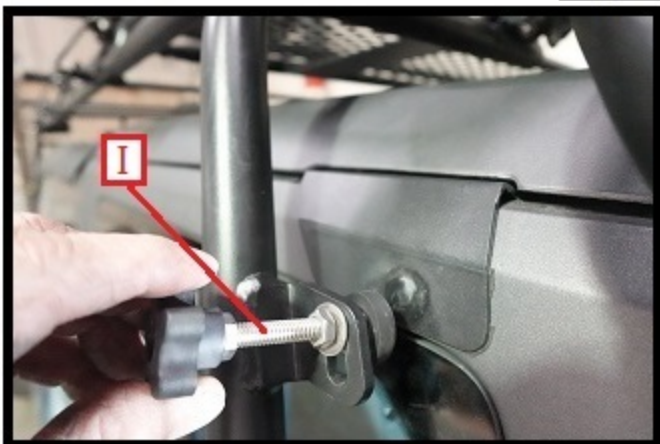
- For quality fits and safty, use only the recommended rack or accessory. Do not assume an accessory will fit, always check with dealer when obtaining new accessories. Use only approved accessories on load carriers. Using other brands will void your warrenty.
- Make sure all knobs, bolts, screws, straps, and locks are firmly attached, tightened and locked before every trip. Knobs, bolts, screws, straps, and locks must be periodically inspected for signs of wear, corrosion, and fatigue. Check your load at stops during the trip to insure continued fastening security.
- Check local and state laws governing projection of objects beyound the width of a vehicle. **Be aware of the width and height of your cargo since low clearance branches, bridges, and parking garages can affect the load** All cargo will affect the vehicle's driving behavior. Never drive with any lock, know, or rack in an open or unlocked position. All long loads such as, but not limited to sailboards, surfboards, kayaks, canoes, and lumber must be tied down front and rear to the bumpers or tow hooks, of the vehicle.
- Remove your rack accessories when they are not in use, before intering car washes, prior to taking in your vehicle for service, and whenever clearance may be an issue.
- All locks must be turned and moved periodically to insure smooth operation. Use graphite or similar dry lubricant to help this. Locks are designed to deter vandalism and theft. Remove valuable gear if your vehicle is unattended for an extended period. Place at least one key in the glove compartment.
- For safety to your vehicle and rack system, obey all posted speed limits and traffic cautions. Adapt your speed to the conditions of the road and the load being carried.
- Do not use load carriers and accessories for purposes other than those for which they were designed. Do not exceed their carrying capacity.
- Consult with your dealer if you have any questions regarding the operations and limits of this product. Review all instructions carefully.

**GOBI BRONCO 4 DOOR HARD TOP ROOF RACK MOLLE PANEL
INSTALLATION INSTRUCTIONS****Included in kit**

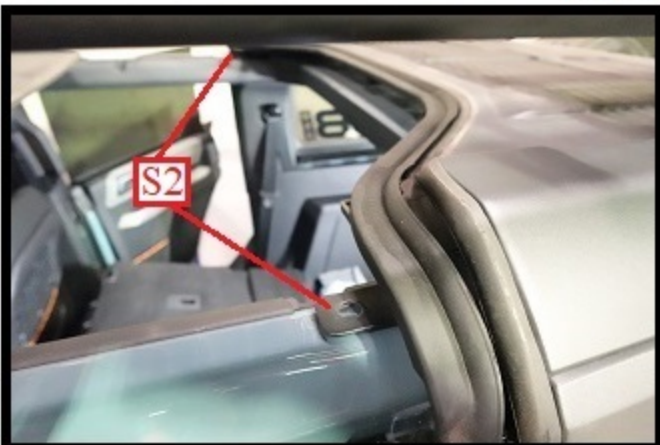
Letter	Description	Location	Quantity
A	GOBI FORD BRONCO HARD TOP ROOF RACK EXT. MOLLE PANEL	Main Box	1
B	GOBI MOLLE PANEL PINCH PLATE	Main Box	1
C	GOBI MOLLE PANEL HANGER PLATE	Main Box	1
D	GOBI MOLLE PANEL HANGER PLATE EXTENSION	Main Box	1
E	GOBI MOLLE PANEL LOWER SUPPORT PLATE EXTENSION	Main Box	1
F	GOBI MOLLE PANEL MAIN LOWER SUPPORT PLATE	Main Box	1
G	GOBI MOLLE PANEL FRONT GUSSET	Main Box	1
H	GOBI MOLLE PANEL REAR GUSSET	Main Box	1
I	GOBI MOLLE PANEL WEAR PLATE	Main Box	1
J	MOLLE PANEL MOUNTING HARDWARE <u>CONTENTS:</u> 15- 1/4-20 x 1" SS Button head screws 30- 1/4" SS flat washers 15- 1/4" SS Nylock nuts 1- Anti-seize lubricant	Bag #1	1



GOBI BRONCO 4 DOOR HARD TOP ROOF RACK MOLLE PANEL INSTALLATION INSTRUCTIONS

Fig. 1**Fig. 2**

As shown in Fig. 1, remove both front hard top panels and set aside. Reposition the secondary hard top panel (P) forward as shown in Fig. 1. As shown in Fig. 2 loosen both hard top upper isolator screws (I) and secure away from hard top.

Fig. 3**Fig. 4**

As shown in Fig. 3, remove all hard top mounting screws (S1) 4 screws per side using a T-50 Torx wrench. Then as shown in Fig. 4, remove 1 screw (S2) per side using the same T-50 Torx wrench on the roof top holding the hard top in place. These are all the screws securing the hard top to the vehicle body.

GOBI BRONCO 4 DOOR HARD TOP ROOF RACK MOLLE PANEL INSTALLATION INSTRUCTIONS

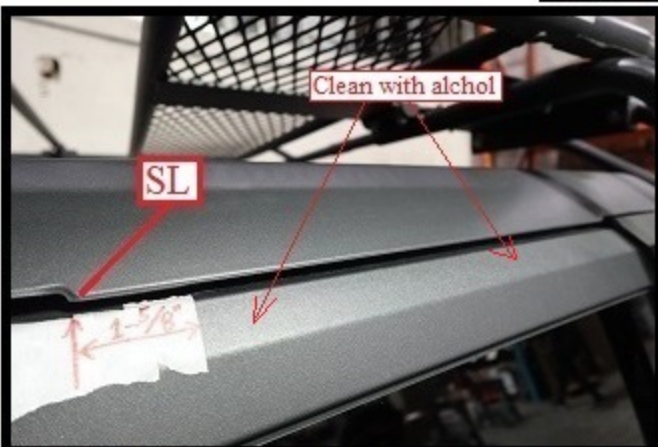
Fig. 5**Fig. 6**

As shown in Fig. 5, with the help of a friend lift hard top and slide a 1" spacer of wood (SP) or the like between the hard top and vehicle body to both the driver and passenger sides temporarily holding the hard top up. As shown in Fig. 6, remove the driver side main lower support (F) from your hardware kit. Then as shown in Fig. 6, loosen two screws (S3) using a 10mm box end wrench enough to slide main support plate (F) under the screws.

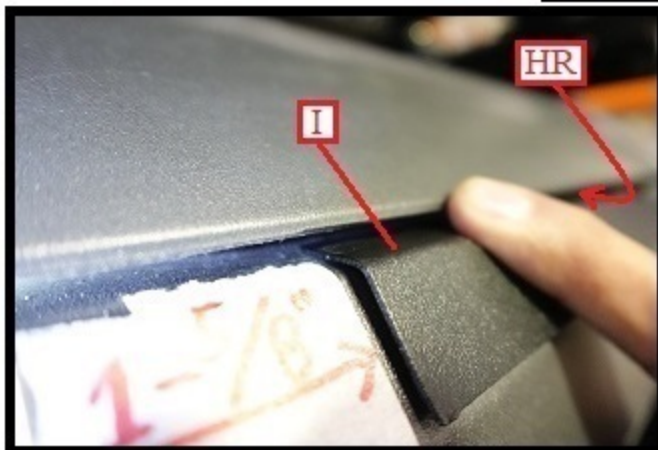
Fig. 7**Fig. 8**

As shown in Fig. 7 and Fig. 8, slide the main support plate (F) under the two 6mm screws (S3) and slide support plate (F) to the rear of the vehicle shown by a red arrow, locking the two 6mm screws into support plate (F). Fully tighten screws (S3) using a 10mm box end wrench.

GOBI BRONCO 4 DOOR HARD TOP ROOF RACK MOLLE PANEL INSTALLATION INSTRUCTIONS

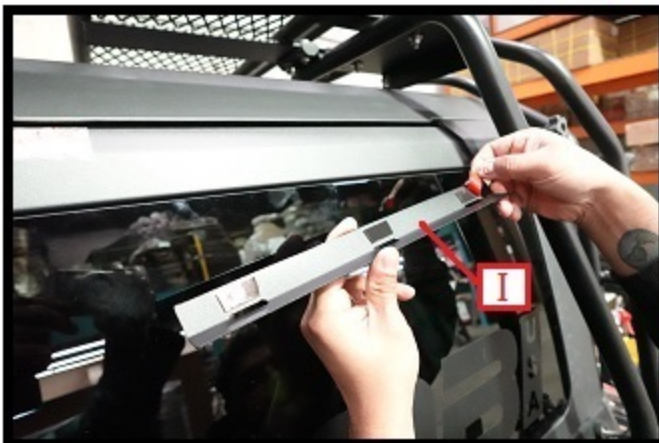
Fig. 9**Fig. 10**

As shown in Fig. 9, lower the hard top back in place and reinstall all screws. Reinstall the secondary and front hard top panels back in place. Also reset the top rear isolator screws back against roof top as was loosened earlier in Fig. 2. As shown in Fig. 10, place masking tape over the area on the forward OEM roof rack mounting slot (SL) shown in Fig. 9 and Fig. 10. Then place a mark 1-5/8" from the end of the OEM roof rack mounting slot as shown. Clean the area shown by red arrows with denatured alcohol to remove all dirt and debris.

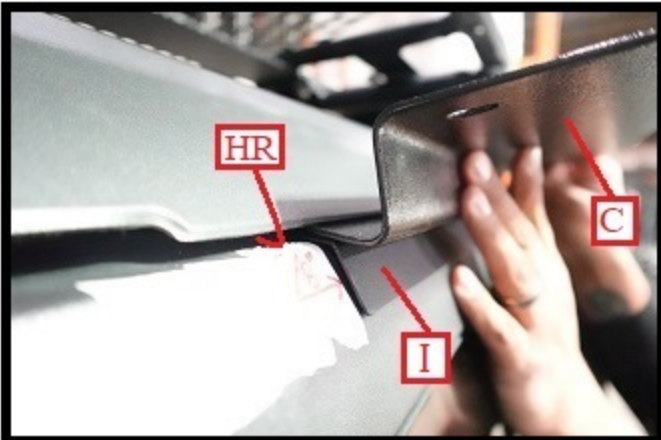
Fig. 11**Fig. 12**

As shown in Fig. 11, remove wear plate (I) from your hardware kit. Do not remove the double back tape protective cover yet. Place wear plate (I) so that the left side edge of wear plate is aligned with the masking tape marker edge shown in Fig. 12. Set wear plate into hardtop recess opening (HR) to better understand how the wear plate will fit.

GOBI BRONCO 4 DOOR HARD TOP ROOF RACK MOLLE PANEL INSTALLATION INSTRUCTIONS

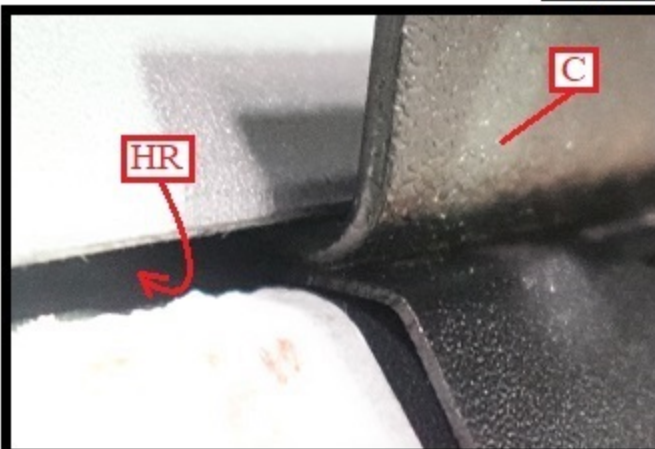
Fig. 13**Fig. 14**

As shown in Fig. 13, remove the double back tape protective cover from wear plate (I). Reinstall wear plate (I) back in place as was shown in Figures 11 and 12.

Fig. 15**Fig. 16**

As shown in Fig. 15, remove hanger plate (C) from your hardware kit. As shown in Fig. 16, align hanger plate (C) with wear plate (I) then slide the short end of hanger plate (C) into the hardtop recess (HR). Slide hanger plate (C) into recess until the full back length of hanger plate (C) contacts the hard top as shown in Fig. 17.

GOBI BRONCO 4 DOOR HARD TOP ROOF RACK MOLLE PANEL INSTALLATION INSTRUCTIONS

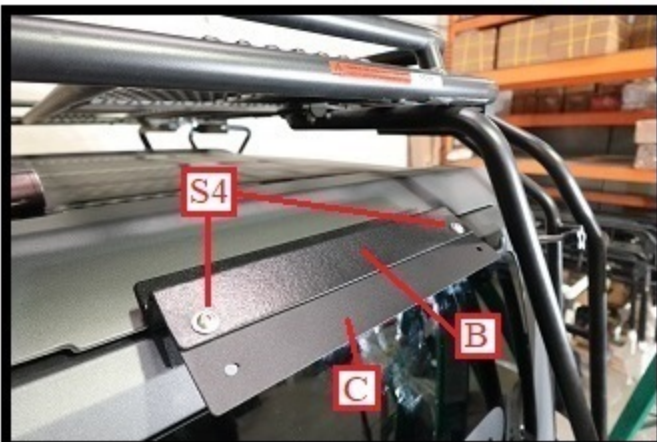
Fig. 17**Fig. 18**

As shown in Fig. 17, make certain hanger plate (C) is fully inserted into hard top recess (HR) then allow hanger plate (C) to rest in the downward position as shown in Fig. 18.

Fig. 19**Fig. 20**

As shown in Fig. 19, remove pinch plate (B) from your hardware kit. As shown in Fig. 20 place pinch plate (B) over the top of hanger plate (C).

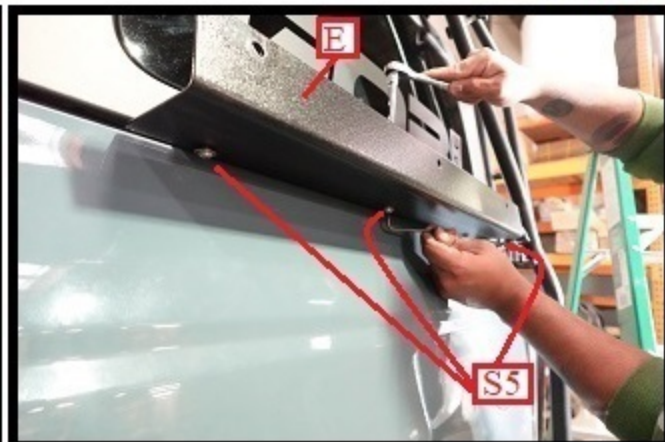
GOBI BRONCO 4 DOOR HARD TOP ROOF RACK MOLLE PANEL INSTALLATION INSTRUCTIONS

Fig. 21

As shown in Fig. 21, use two 1/4-20 x 1" button head screws, two 1/4" flat washers (S4) located in Bag #1 and insert them down through the holes in pinch plate (B) then down through the holes in hanger plate (C). Add two 1/4" flat washers and two 1/4" nylock nuts to the underside of hanger plate (C) onto screws (S4) and snug down screws (S4) using a 7/16" ratchet and 5/32" Allen wrench. Do not fully tighten at this time.

Fig. 22

As shown in Fig. 22 remove lower support plate (E) from your hardware kit.

Fig. 23**Fig. 24**

As shown in Fig. 24, insert three 1/4-20 x 1" button head screws and three 1/4" flat washers (S5) located in Bag #1, up through lower support plate (E) and up into main support plate (F) as shown in Fig. 23. Then thread on three 1/4" flat washers and three 1/4" nylock nuts to the opposite side of screws (S5) and snug down in place, do not fully tighten. As shown in Fig. 23, pull support plate (E) fully outward shown by red arrows evenly, then fully tighten the center screw (S5) as shown in Fig. 24.

GOBI BRONCO 4 DOOR HARD TOP ROOF RACK MOLLE PANEL INSTALLATION INSTRUCTIONS

Fig. 25**Fig. 26**

As shown in Fig. 25, remove gusset bracket (G) from your hardware kit. As shown in Fig. 26, loosen the 1/4-20 x 1" screw (S5) and place gusset bracket (G) under the 1/4" flat washer and 1/4" nylock nut and snug down in place. Leave some play for later adjustment.

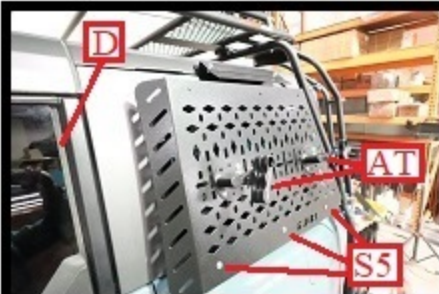
Fig. 27**Fig. 28**

As shown in Fig. 27 and Fig. 28, remove the second gusset plate (H) from your hardware kit and place it under the (S5) 1/4" flat washer and 1/4" nylock nut and snug down in place. Leave some play for later adjustment.

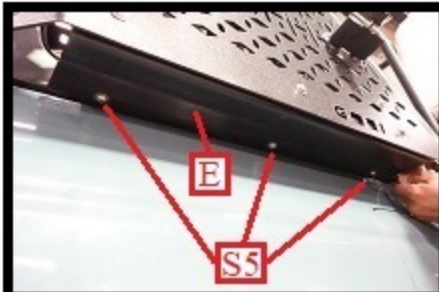
GOBI BRONCO 4 DOOR HARD TOP ROOF RACK MOLLE PANEL INSTALLATION INSTRUCTIONS

Fig. 29**Fig. 30****Fig. 31**

As shown in Fig. 29, remove the Gobi Bronco molle panel (A) from your hardware box. As shown in Fig. 30, take one 1/4-20 x 1" button head screw, one 1/4" flat washer (S5) and insert into the center hole at the bottom of molle panel (A). Use a step ladder and place your arm behind the molle panel and thread onto screw (S5) one 1/4" flat washer and 1/4" nylock nut and snug down in place using a 5/32" Allen wrench and 7/16" open or closed end wrench.

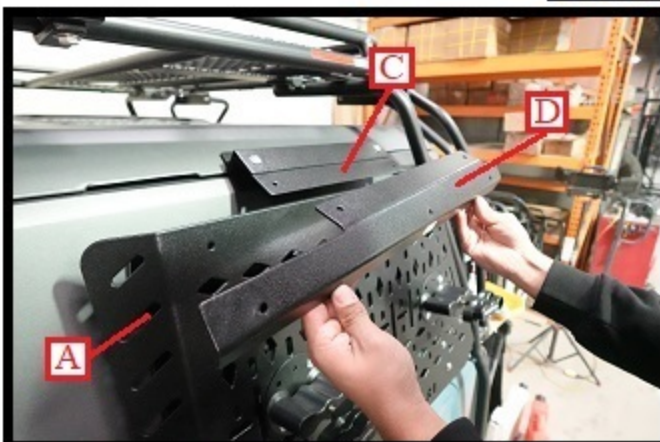
Fig. 32**Fig. 33****Fig. 34**

As shown in Fig. 32, you may want to mount your fuel or water rotopax attachments (AT). Make certain when mounting your attachments that the rear door (D) can still be opened after. As shown in Fig. 32, install all three lower 1/4-20 x 1" button head screws (S5) and snug them down. As shown in Fig. 33 and Fig. 34, insert one 1/4-20 x 1" button head screw and flat washer (S6) and add a 1/4" flat washer and 1/4" nylock nut behind and snug down in place.

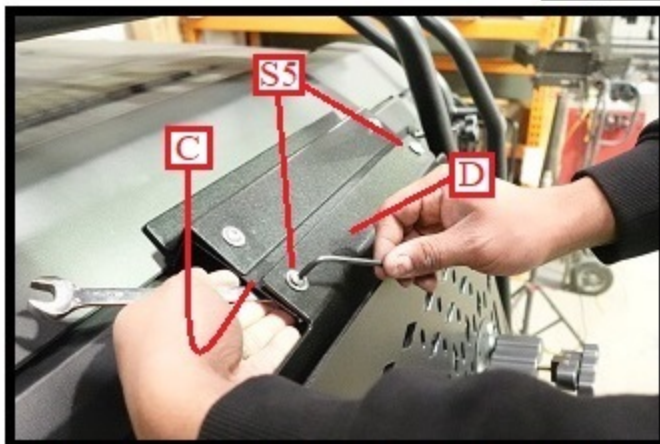
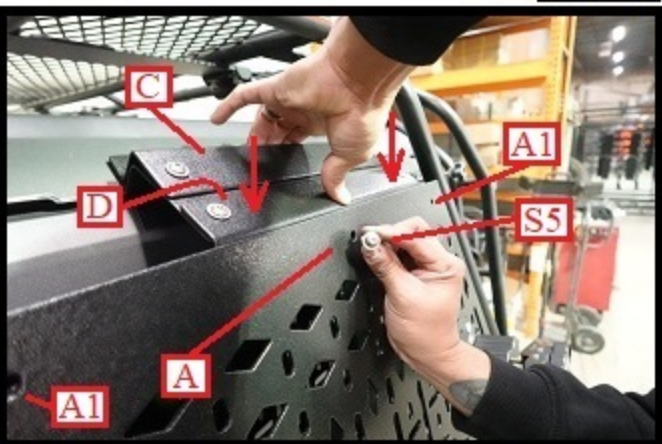
Fig. 35**Fig. 36****Fig. 37**

As shown in Fig. 35, fully tighten all three lower support bracket (E) screws (S5) using a 5/32" Allen wrench and 7/16" box end wrench. As shown in Fig. 36, fully tighten all three screws (S5) using the same tools. As shown in Fig. 37, fully tighten both screws (S6) using the same tools.

GOBI BRONCO 4 DOOR HARD TOP ROOF RACK MOLLE PANEL INSTALLATION INSTRUCTIONS

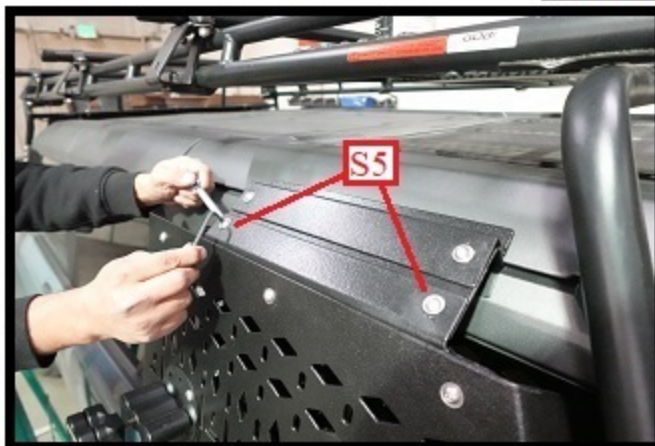
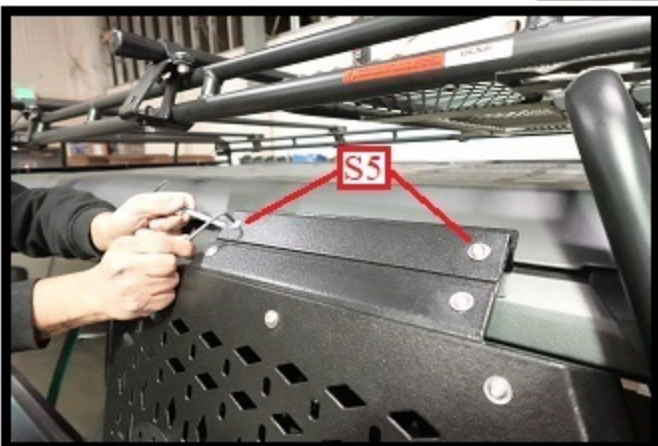
Fig. 38**Fig. 39**

As shown in Fig. 38 and Fig. 39, remove upper hanger plate extension (D) located in your hardware kit and set it onto hanger plate (C) behind molle panel (A) as shown in Fig. 39.

Fig. 40**Fig. 41**

As shown in Fig. 40, insert two 1/4-20 x 1" button head screws and two 1/4" flat washers (S5) into hanger plate extension plate (D) then into hanger plate (C). Add one 1/4" flat washer and 1/4" nylock nut behind hanger plate (C) and onto screws (S5) and snug down in place using a 5/32" Allen wrench and 7/16" box end ratchet wrench. As shown in Fig. 41, push down with force hanger plate extension (D), shown by red arrows and align center hole of molle panel (A), with center hole of hanger plate extension (D). Insert one 1/4-20 x 1" button head screw and 1/4" flat washer (S5). (If holes do not align adjust hanger plate (C) right or left until alignment is made). Add one 1/4" flat washer and 1/4" nylock nut to the back of hanger plate extension (D) onto screw (S5) and snug down in place. Insert one 1/4-20 x 1" button head screw and 1/4" flat washer to each end hole (A1) in molle panel (A) and into extension plate (D) and add one 1/4" flat washer and 1/4" nylock nut and fully tighten all three screws (S5) securing molle panel (A) to extension plate (D).

GOBI BRONCO 4 DOOR HARD TOP ROOF RACK MOLLE PANEL INSTALLATION INSTRUCTIONS

Fig. 42**Fig. 43**

As shown in Fig. 42 and Fig. 43, fully tighten all four screws (S5) using a 5/32" Allen wrench and 7/16" box end ratchet wrench.

Fig. 44**Fig. 45**

As shown in Fig. 44, molle panel is fully installed and ready to accept fuel and water rotopax or other similar brands and different attachments. As shown in Fig. 45, a 2-1/2-gallon rotopax fuel can has been added and rear door (D) is open to show clearance.

GOBI BRONCO 4 DOOR HARD TOP ROOF RACK MOLLE PANEL INSTALLATION INSTRUCTIONS



INSTALLATION COMPLETED