

CAUTION!!

**DO NOT LEVERAGE ANY
TOOL AGAINST THE
BODY WHEN REMOVING
THE OEM ROOF RACK
PLASTIC END CAPS AS
THIS WILL CAUSE BODY
DAMAGE.**

DO NOT SET PRY TOOLS AGAINST ROOF TOP



CAUTION: USE ANTI-SEIZE LUBRICANT ON ALL SCREWS

GOBI TOYOTA LAND CRUISER 2024 ROOF RACK INSTALLATION INSTRUCTIONS

Guidelines:

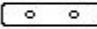
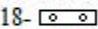
When using Load Carriers and Accessories, the user must understand the precautions. The points listed below will assist you in using the rack /carrier system and will encourage safety.

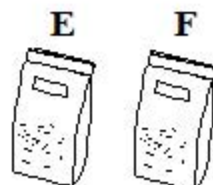
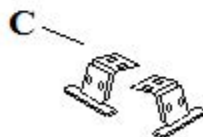
- For quality fits and safty, use only the recommended rack or accessory. Do not assume an accessory will fit, always check with dealer when obtaining new accessories. Use only approved accessories on load carriers. Using other brands will void your warrenty.
- Make sure all knobs, bolts, screws, straps, and locks are firmly attached, tightened and locked before every trip. Knobs, bolts, screws, straps, and locks must be periodically inspected for signs of wear, corrosion, and fatigue. Check your load at stops during the trip to insure continued fastening security.
- Check local and state laws governing projection of objects beyound the width of a vehicle. **Be aware of the width and height of your cargo since low clearance branches, bridges, and parking garages can affect the load** All cargo will affect the vehicle's driving behavior. Never drive with any lock, know, or rack in an open or unlocked position. All long loads such as, but not limited to sailboards, surfboards, kayaks, canoes, and lumber must be tied down front and rear to the bumpers or tow hooks, of the vehicle.
- Remove your rack accessories when they are not in use, before intering car washes, prior to taking in your vehicle for service, and whenever clearance may be an issue.
- All locks must be turned and moved periodically to insure smooth operation. Use graphite or similar dry lubricant to help this. Locks are designed to deter vandalism and theft. Remove valuable gear if your vehicle is unattended for an extended period. Place at least one key in the glove compartment.
- For safety to your vehicle and rack system, obey all posted speed limits and traffic cautions. Adapt your speed to the conditions of the road and the load being carried.
- Do not use load carriers and accessories for purposes other than those for which they were designed. Do not exceed their carrying capacity.
- Consult with your dealer if you have any questions regarding the operations and limits of this product. Review all instructions carefully.

CAUTION: USE ANTI-SEIZE LUBRICANT ON ALL SCREWS

GOBI TOYOTA LAND CRUISER 2024 ROOF RACK INSTALLATION INSTRUCTIONS

Included in kit

LETTER	DESCRIPTION	LOCATION	QUANTITY
A	GOBI TOYOTA LAND CRUISER 2024 ROOF RACK	Main box	1
B	WIND DEFLECTOR COMPLETE <u>CONTENTS:</u> 1- Wind Deflector aluminum black powder coated (strapped to roof rack) 3- Wind deflector mounting brackets pre-assembled to wind deflector 65° 1- Wind deflector clear wear strip packed in roll form (inside Bag #2) 3- 1/4-20 x 3/4" Button head screw SS (inside Bag #2) 6- 1/4" ID. x 1/2" O.D. black nylon round washer (inside Bag #2) 3- 1/4" Nylock nut SS (inside Bag #2) Wind deflector installation instructions inside Bag #2	Wind deflector complete banded to roof rack including Bag #2	1
C	GOBI FRONT ADJUSTABLE SUPPORT BRACKETS DRIVER AND PASSENGER SIDE	Hardware box	1 ea.
D	GOBI RACK MIDDLE AND REAR SUPPORT BRACKETS (4R)	Hardware box	6
E	GOBI RACK MOUNTING HARDWARE <u>CONTENTS:</u> 6- Cover plates black large 6" x 1-1/2" —  18- Flat double hole rubber seals 2-1/4" —  12- 1/2" Nylon spacers #MP-13RSO72050 12- M8 x 50mm Button head screws SS 12- 5/16" Lock washers SS 12- 5/16" Water tight neoprene washers SS 1- M5 Metric Allen wrench 1- Packet of Anti-Seize lubricant	BAG #3 Hardware Box	1
F	GOBI RACK SUPPORT BRACKET HARDWARE <u>CONTENTS:</u> 16- 5/16-18 x 1" Hex head screws SS 32- M8 x 24 Fender washer #8N24WFE3 SS 16- 5/16" Nylock nuts 8- Black 2 hole rubber pads	BAG #4 Hardware Box	1



GOBI TOYOTA LAND CRUISER 2024 ROOF RACK INSTALLATION INSTRUCTIONS

**Fig. 1**

As shown in Fig. 1, the OEM roof rails (R) must be removed prior to a Gobi rack installation.

Fig. 2**Fig. 3**

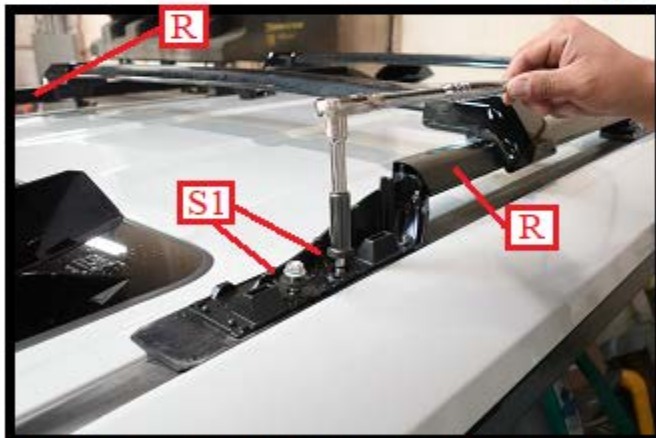
CAUTION: DO NOT PRY AGAINST THE VEHICLE BODY AS THIS WILL CAUSE DAMAGE.

As shown in Fig. 2, use a plastic pry tool and lift up at the ends of each rail cover (RC). Pry up against the rubber trim (TR) until the cover (RC) lifts. As shown in Fig. 3, pull cover (RC) off and apply the same procedure to the remaining 3 OEM rail covers.

GOBI TOYOTA LAND CRUISER 2024 ROOF RACK INSTALLATION INSTRUCTIONS

Fig. 4**Fig. 5**

As shown in Fig. 4 and Fig. 5, use a thin plastic pry tool and remove the center rail cover (CR) of the driver and passenger sides. Set aside as the roof top rails will no longer be needed.

Fig. 6**Fig. 7**

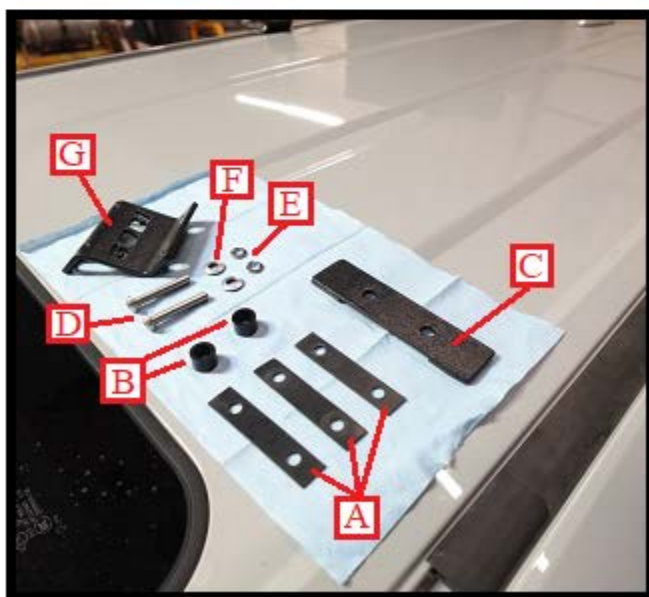
PLEASE TAKE CAUTION WHEN REMOVING THE ROOF TOP SCREWS.

As shown in Fig. 6, remove both screws (S1) from the ends of both rails (R) using a 12mm ratchet drive. Do not remove one screw at a time. Loosen one screw halfway out, then the other halfway out. Then fully loosen one screw but do not remove the screw, leave inside roof top. Fully loosen the second screw, now both screws can be removed. If you try and remove one screw at a time, you will damage the nut plate under the roof top which will need to be replaced. As shown in Fig. 7, remove screw (S2) on both sides of the OEM roof rails using a 12mm socket drive.

GOBI TOYOTA LAND CRUISER 2024 ROOF RACK INSTALLATION INSTRUCTIONS

Fig. 8**Fig. 9**

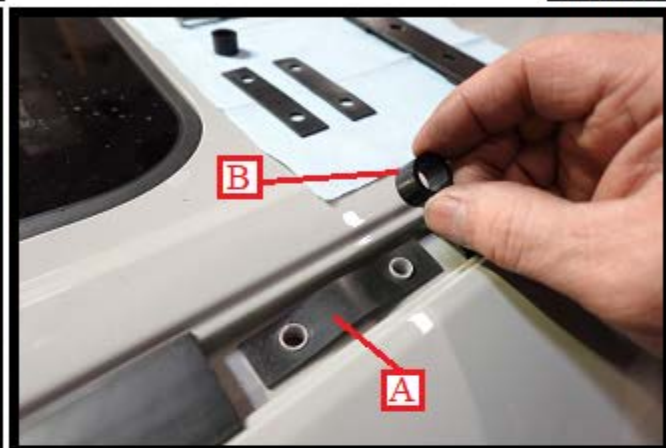
As shown in Fig. 8, remove the OEM rails (R) off the roof top. As shown in Fig. 9, use a 12mm socket and remove the center OEM rail support (CR) in the same procedure explained in Fig. 6, for the other roof top rail screws.

Fig. 10

As shown in Fig. 10, place at each mounting point all the necessary parts to complete the roof rack support bracket installation.

- A- Rubber seal x3
- B- Nylon spacer x 2
- C- Cover plate x1
- D- M8x50mm Allen head screws x2
- E- 5/16" lock washers x2
- F- 5/16" Watertight neoprene washers x2
- G- Roof rack support bracket x1

GOBI TOYOTA LAND CRUISER 2024 ROOF RACK INSTALLATION INSTRUCTIONS

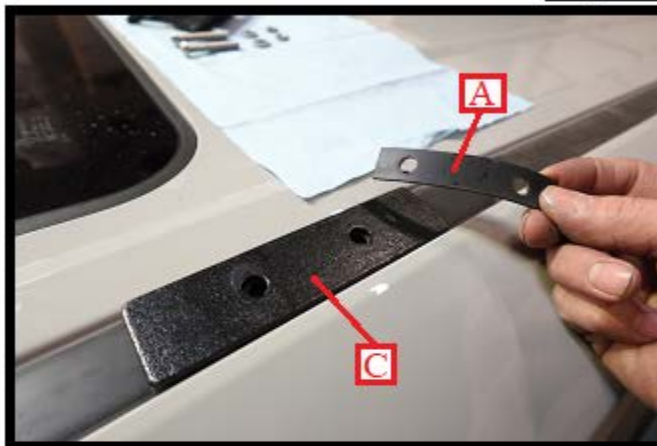
Fig. 11**Fig. 12**

As shown in Fig. 11, clean all mounting points with denatured alcohol to remove all dirt and debris. Install one rubber seal (A) over both roof top white straw tubes. As shown in Fig. 12, place one nylon spacer (B) over each straw tube and onto the rubber seal (A).

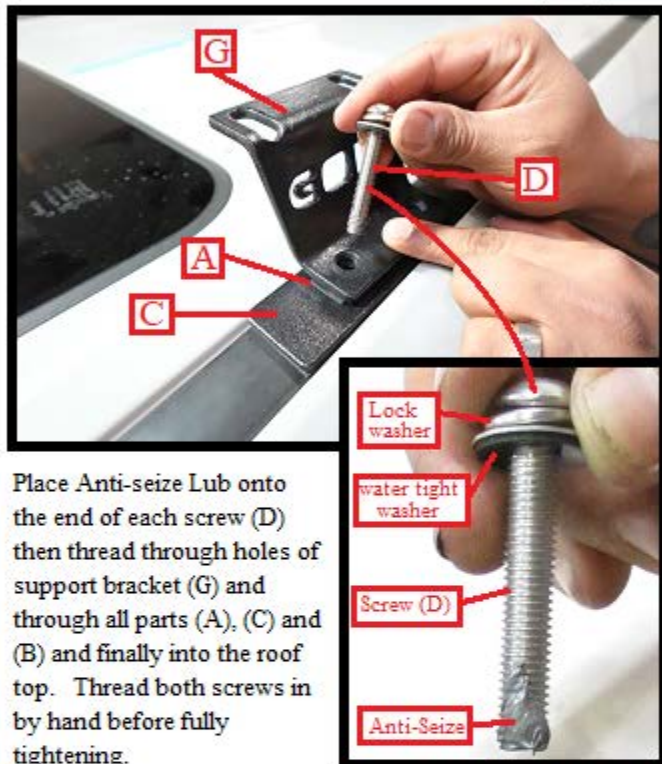
Fig. 13**Fig. 14**

As shown in Fig. 13 and Fig. 14, place another rubber seal (A) on top of the two nylon spacers (B). Then place over the entire assembly cover plate (C). Make certain the holes in all parts are aligned.

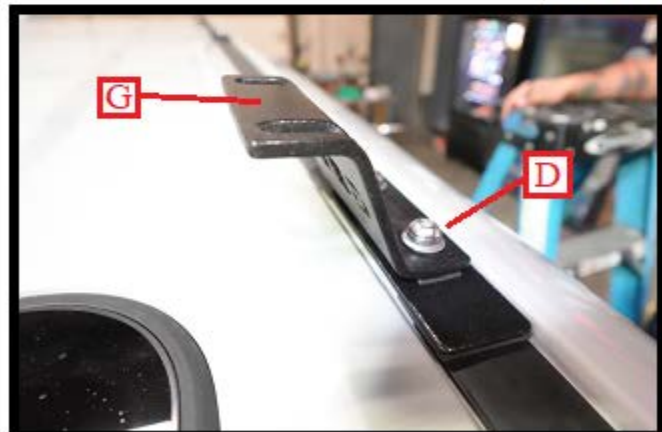
GOBI TOYOTA LAND CRUISER 2024 ROOF RACK INSTALLATION INSTRUCTIONS

Fig. 15

As shown in Fig. 15, place one more seal (A) over the cover plate (C) and make certain all holes of all parts are in line with screw holes in roof top.

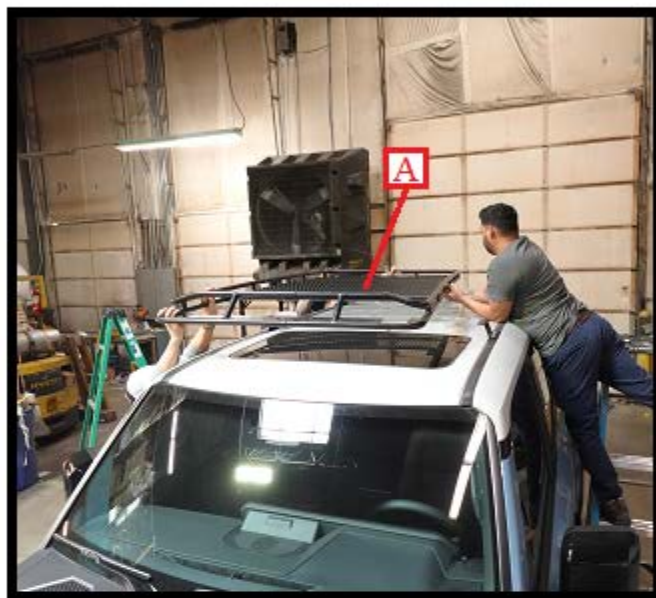
Fig. 16

Place Anti-seize Lub onto the end of each screw (D) then thread through holes of support bracket (G) and through all parts (A), (C) and (B) and finally into the roof top. Thread both screws in by hand before fully tightening.

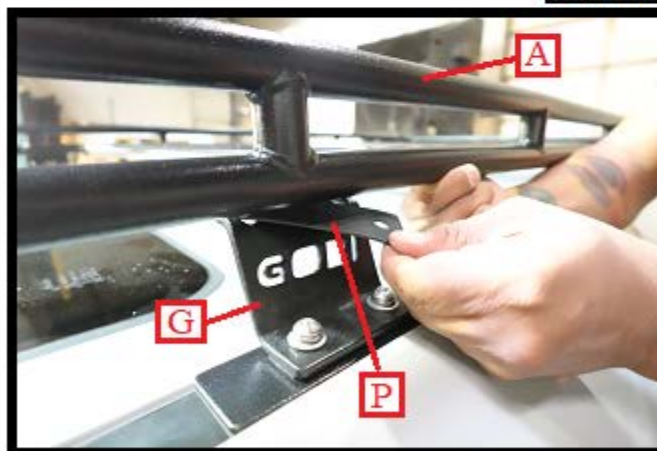
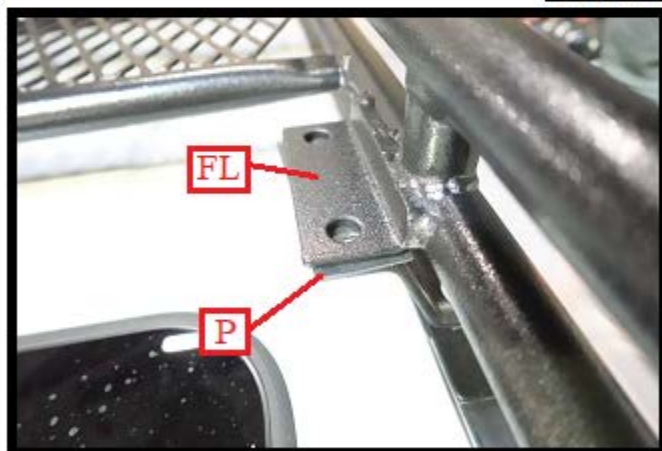
Fig. 17**Fig. 18**

As shown in Fig. 17, tighten both screws (D) using the supplied 5mm Allen wrench located in Bag #3. Do not fully tighten, leave some play for later adjustment. Fig.18 shows a properly assembled Gobi roof rack support bracket (G) mounted to the Toyota Land Cruiser 2024 roof top. Apply the same procedure to the remaining 5 support brackets.

GOBI TOYOTA LAND CRUISER 2024 ROOF RACK INSTALLATION INSTRUCTIONS

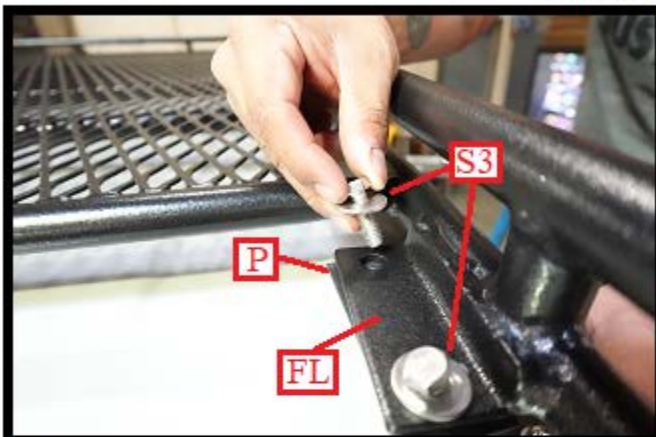
**Fig. 19**

As shown in Fig. 19, with the help of some friends lift roof rack (A) onto the vehicle roof top. Make certain to align all roof racks welded in flanges (FL) shown in Fig. 21 with the 6 roof rack support brackets previously installed on the vehicle roof top.

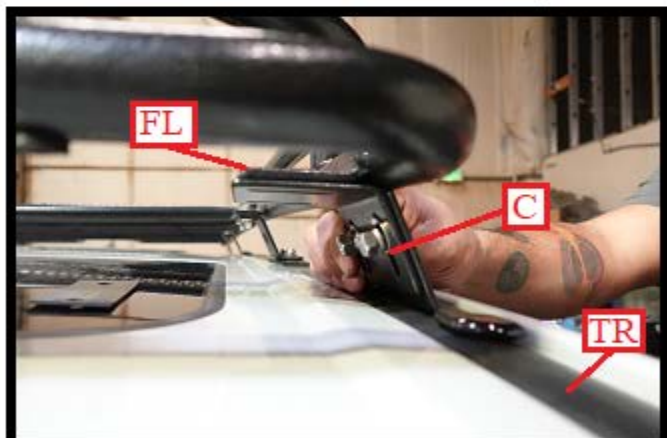
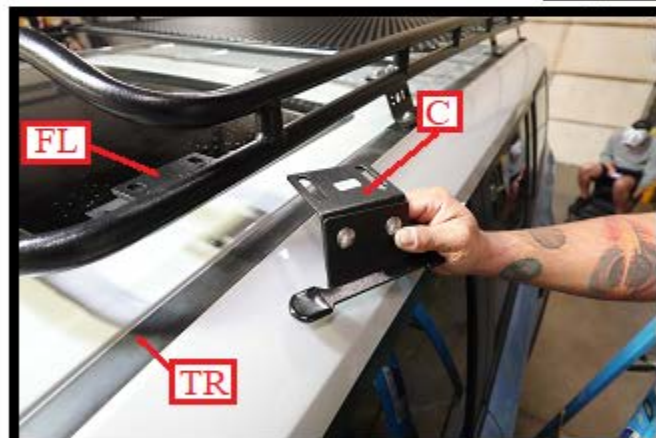
Fig. 20**Fig. 21**

As shown in Fig. 20, remove one rubber pad (P) from Bag #4 of your hardware kit. Lift roof rack (A) and slip rubber pad (P) in between the support bracket (G) and roof rack. As shown in Fig. 21, align rubber pad (P) holes with the welded in flange (FL).

GOBI TOYOTA LAND CRUISER 2024 ROOF RACK INSTALLATION INSTRUCTIONS

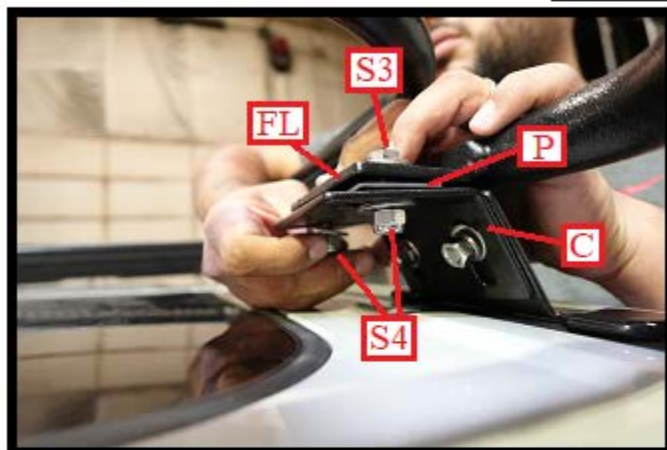
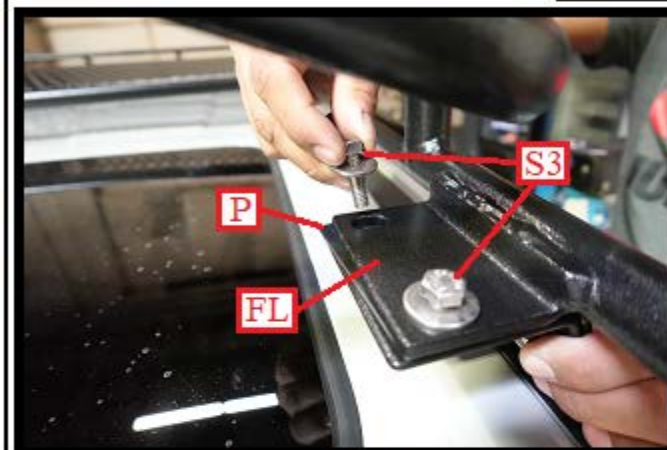
Fig. 22**Fig. 23**

As shown in Fig. 22 and Fig. 23, remove 2- 5/16-18 x 1" hex head screws and 2- M8 x 24 fender washers (S3) and insert them down through flange (FL) then into rubber pad (P) and into support bracket (G). As shown in Fig. 23, thread onto the bottom of both screws (S3) 2- M8 x 24 flat washers and 2- 5/16" nylock screws (S4) and finger tighten in place. Apply the same procedure to the remaining 5 other support brackets (G).

Fig. 24**Fig. 25**

As shown in Fig. 24, remove from your hardware kit the driver side front support bracket (C) indicated by a sticker. As shown in Fig. 25, place the driver side support bracket (C) under the roof rack front flange (FL) and onto the roof top rubber trim (TR).

GOBI TOYOTA LAND CRUISER 2024 ROOF RACK INSTALLATION INSTRUCTIONS

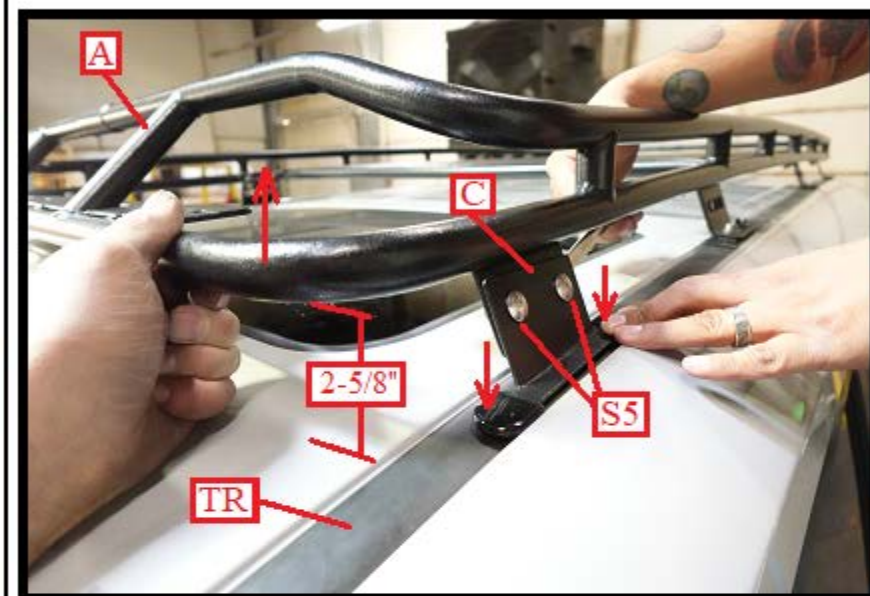
Fig. 26**Fig. 27**

As shown in Fig. 26 and Fig. 27, place one rubber pad (P) between the front roof rack flange (FL) and front support bracket (C). Then insert 1- 5/16-18 x 1" hex screw and 1- M8 x 24 flat washers (S3) down through flange (FL) then through rubber pad (P) and through front support bracket (C). As shown in Fig. 27, thread onto the bottom of screws (S3) 1- M8 x 24 flat washer and 1- 5/16" nylock nut (S4) and finger tighten in place.

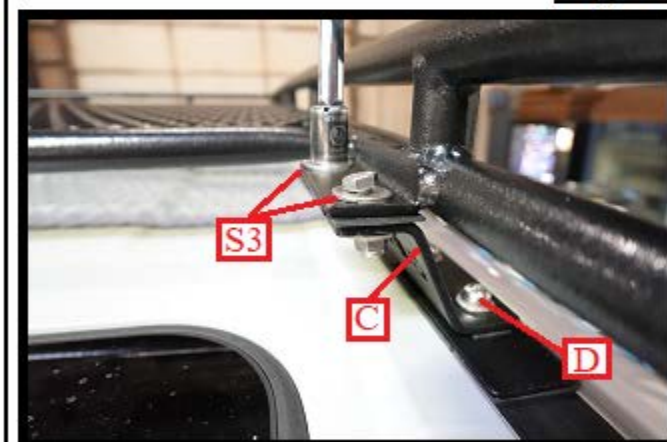
Fig. 28**Fig. 29**

As shown in Fig. 28 and Fig. 29, slide front driver side support bracket (C) to the outer edge of roof top trim (TR) shown by red arrows. Hold in place and fully tighten screws (S3) using a 1/2" ratchet on top and a 1/2" open or closed end wrench below. Apply the same procedure to the passenger side front support bracket (C).

GOBI TOYOTA LAND CRUISER 2024 ROOF RACK INSTALLATION INSTRUCTIONS

**Fig. 30**

As shown in Fig. 30, lift the front of roof rack (A) until you measure 2-5/8" from the underside of the roof rack to the roof top next to roof top trim (TR). With the help of a friend hold roof rack (A) in place and push down support bracket (C) shown by red arrows so that it fully contacts the rubber trim surface (TR). Then fully tighten both screws (S5) using a 1/2" open or closed end wrench. Apply the same procedure to the passenger side support bracket (C).

Fig. 31**Fig. 32**

As shown in Fig. 31, fully tighten all (S3) screws of support brackets (C) to roof rack using a 1/2" ratchet and 1/2" wrench. Then fully tighten all screws (D) of support brackets (C) to vehicle roof top using a 5mm Allen wrench. As shown in Fig. 32, roof rack (A) is now fully tightened in place and ready for the roof rack wind deflector (B) to be installed. Refer to the Gobi roof rack wind deflector installation instructions which are tied to wind deflector and the wind deflector is tied to roof rack upon delivery.

GOBI TOYOTA LAND CRUISER 2024 ROOF RACK INSTALLATION INSTRUCTIONS



INSTALLATION COMPLETED