

GOBI JEEP JL 4e 2 & 4 DOOR ROOF RACK GEN 1 INSTALLATION INSTRUCTIONS

The rack must be inspected before each use to make certain attachments are secure, and for evidence of wear. Misuse of the rack or failure to observe the manufacturer's instructions as to installation, proper Attachment and maintenance will void warranties that may be implied by law.

TOOLS REQUIRED FOR INSTALLATION:

- 1- 8mm socket with 6" extension (bumper end cap)**
- 1- 15mm socket 3/8" drive (rear mud guard bracket)**
- 1- 16mm socket 3/8" drive (inside door hinge bolt)**
- 1- 13mm box or open end wrench (windshield hinge bolt)**
- 1- 3/4" socket and 3/4" box end or adjustable wrench (rear support bars)**
- 1- 9/16" socket 3/8" drive with 10" extension**
- 1- 1/2" box or open end wrench (rear lower and upper isolators)**
- 1- 9/16" box or open end wrench (front roof rack screws and support towers)**
- 1- Torx bit (T-40) front cowl side covers**
- 1- 5mm Allen wrench (front lower light bar cover plate)**
- 1- 3/16" Allen wrench (front lower light bar Gobi logo support bracket)**

CAUTION

USE ANTI-SEIZE LUBRICANT ON ALL SCREWS

NOTE: PAY SPECIAL ATTENTION TO RED HIGHLIGHTED INSTRUCTIONS

GOBI JEEP JL 4e 2 & 4 DOOR ROOF RACK GEN 1 INSTALLATION INSTRUCTIONS

Guidelines:

When using Load Carriers and Accessories, the user must understand the precautions. The points listed below will assist you in using the rack /carrier system and will encourage safety.

- For quality fits and safty, use only the recommended rack or accessory. Do not assume an accessory will fit, always check with dealer when obtaining new accessories. Use only approved accessories on load carriers. Using other brands will void your warrenty.
- Make sure all knobs, bolts, screws, straps, and locks are firmly attached, tightened and locked before every trip. Knobs, bolts, screws, straps, and locks must be periodically inspected for signs of wear, corrosion, and fatigue. Check your load at stops during the trip to insure continued fastening security.
- Check local and state laws governing projection of objects beyound the width of a vehicle. **Be aware of the width and height of your cargo since low clearance branches, bridges, and parking garages can affect the load** All cargo will affect the vehicle's driving behavior. Never drive with any lock, know, or rack in an open or unlocked position. All long loads such as, but not limited to sailboards, surfboards, kayaks, canoes, and lumber must be tied down front and rear to the bumpers or tow hooks, of the vehicle.
- Remove your rack accessories when they are not in use, before intering car washes, prior to taking in your vehicle for service, and whenever clearance may be an issue.
- All locks must be turned and moved periodically to insure smooth operation. Use graphite or similar dry lubricant to help this. Locks are designed to deter vandalism and theft. Remove valuable gear if your vehicle is unattended for an extended period. Place at least one key in the glove compartment.
- For safety to your vehicle and rack system, obey all posted speed limits and traffic cautions. Adapt your speed to the conditions of the road and the load being carried.
- Do not use load carriers and accessories for purposes other than those for which they were designed. Do not exceed their carrying capacity.
- Consult with your dealer if you have any questions regarding the operations and limits of this product. Review all instructions carefully.

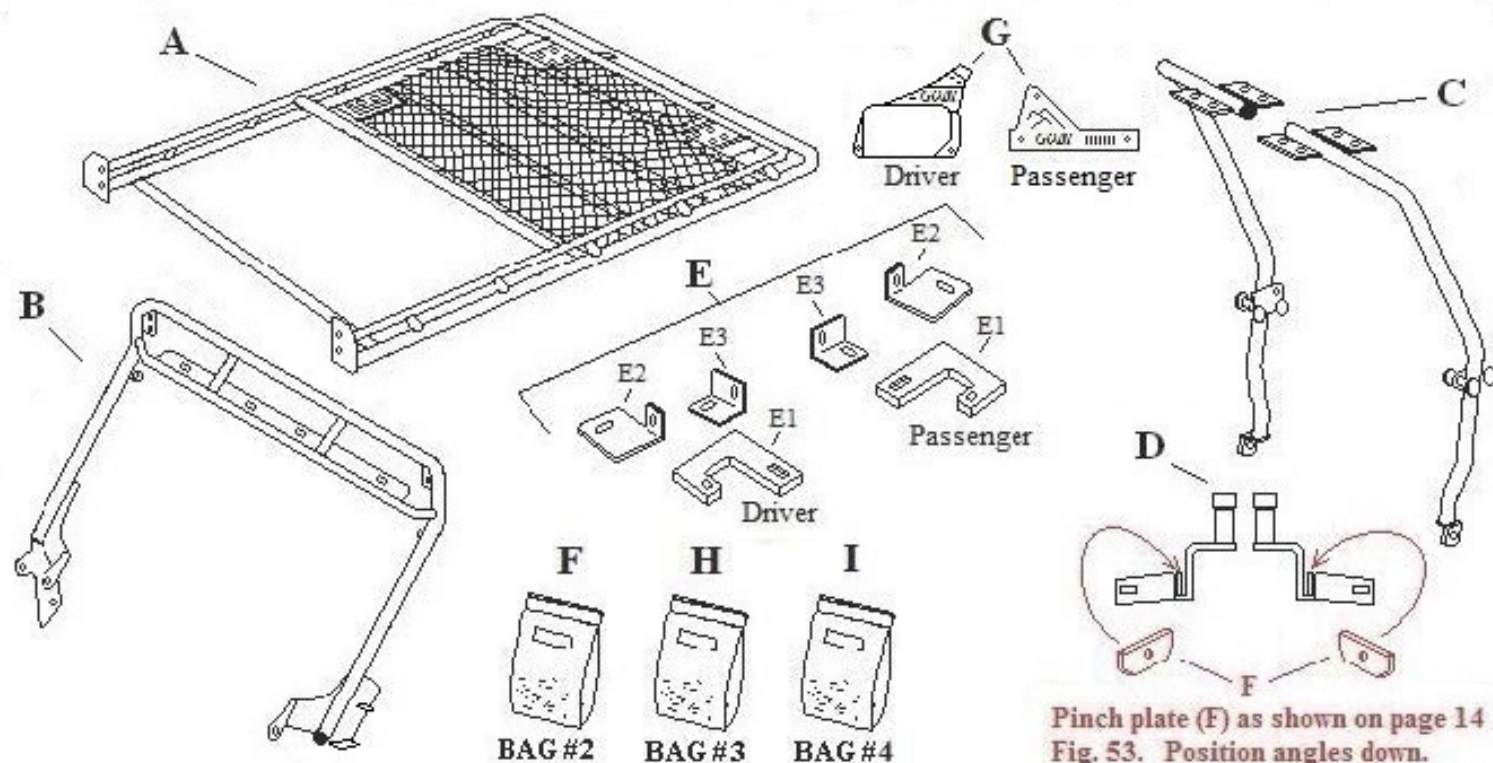
READ ALL INSTRUCTIONS PRIOR TO INSTALLATION

GOBI JEEP JL 4e 2 & 4 DOOR ROOF RACK GEN 1

INSTALLATION INSTRUCTIONS

Included in kit

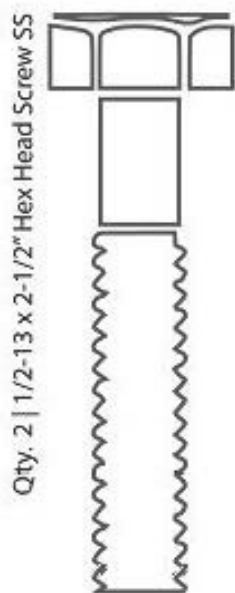
Letter	Description	Location	Quantity
A	GOBI JEEP JL 4e 2 & 4 DOOR ROOF RACK GEN 1	Main box	1
B	GOBI JEEP JL 4E STEALTH FRONT LIGHT BAR	Strapped to Rack	1
C	GOBI JEEP JL SKY 1 REAR RACK SUPPORTS PASSENGER AND DRIVER	Strapped to Rack	1 ea.
D	REAR RACK SUPPORT TOWERS PASSENGER AND DRIVER	Hardware Box	1 ea.
E	REAR TOWER SUPPORT PLATES PASSENGER AND DRIVER	Hardware Box	1 ea.
F	GOBI HINGE BRACKET AND BODY PANEL STRAP PASS AND DRIVER	BAG #2	1 ea.
G	GOBI LIGHT BAR COVER PLATES PASSENGER AND DRIVER	Hardware Box	1 ea.
H	GOBI RACK MOUNTING HARDWARE CONTENTS: 4- Black nylon shoulder washer 4- 1/2" Flat washer SS 2- 1/2" x 2-1/2" hex head screw SS 2- 1/2" Nylock nut SS 8- 3/8-16 x 1-1/4" hex head screw SS 28- 3/8" Flat washer SS 20- 3/8" Nylock nut SS 4- 3/8-16 x 1" Carriage screw SS 8- 3/8-16 x 1-1/4" Carriage screw SS 3- 5/16-18 x 3/4" Button head screw SS 2- 5/16-18 x 1" Button head screw SS 4- M8 x 40mm Button head screw SS 4- Black aluminum spacers (Bag#3a) 16- 5/16" Flat washers SS 4- 5/16" Thick flat washers SS 5- 5/16" Nylock nuts SS 4- 5/16" Lock washer SS 4- Rear support bar position plates (P) 1- Packet Anti-seize lubricant	BAG #3 Hardware Box	1
I	GOBI ISOLATOR HARDWARE PLATES CONTENTS: 2- Black rectangular adhesive backed isolator wear plates Passenger and Driver (place on vehicle rear body panel under rubber isolators) 2- Black hardtop wear plates passenger and driver (place on vehicle hard top under upper rubber isolators) 2- Round brown adhesive backed wear pads 2- Black 1/8" x 1" x 1/2" black adhesive backed pads	BAG #4 Hardware Box	1



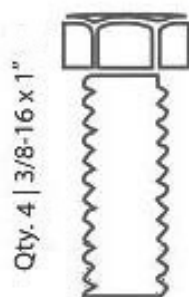
Pinch plate (F) as shown on page 14
Fig. 53. Position angles down.

GOBI JEEP JL 4e 2 & 4 DOOR ROOF RACK GEN 1

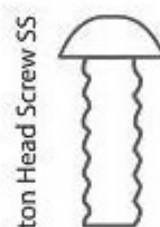
INSTALLATION INSTRUCTIONS



Qty. 2 | 1/2-13 x 2-1/2" Hex Head Screw SS



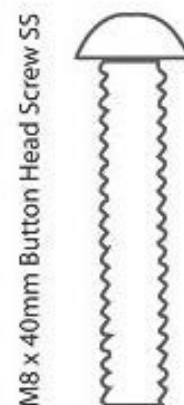
Qty. 4 | 3/8-16 x 1"



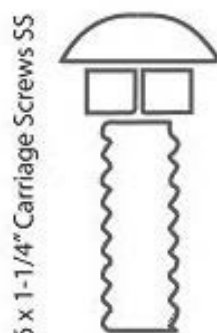
Qty. 3 | 5/16-8 x 3/4" Button Head Screw SS



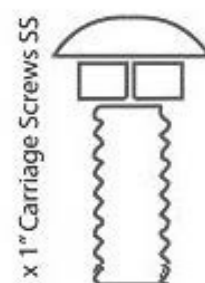
Qty. 2 | 5/16-8 x 1" Button Head Screw SS



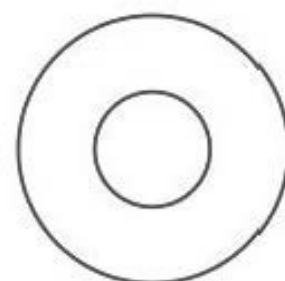
Qty. 4 | M8 x 40mm Button Head Screw SS



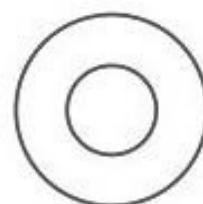
Qty. 8 | 3/8-16 x 1-1/4" Carriage Screws SS



Qty. 4 | 3/8-16 x 1" Carriage Screws SS



Qty. 4 | 1/2" Flat Washer SS



Qty. 28 | 3/8" Flat Washer SS



Qty. 4 | Black Aluminum Spacer



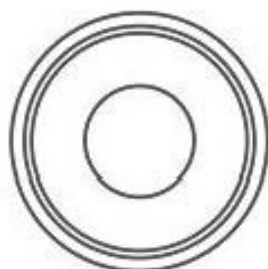
Qty. 16 | 5/16" Flat Washer SS



Qty. 4 | 5/16" Thick Flat Washer SS



Qty. 4 | 5/16" Lock Washer SS



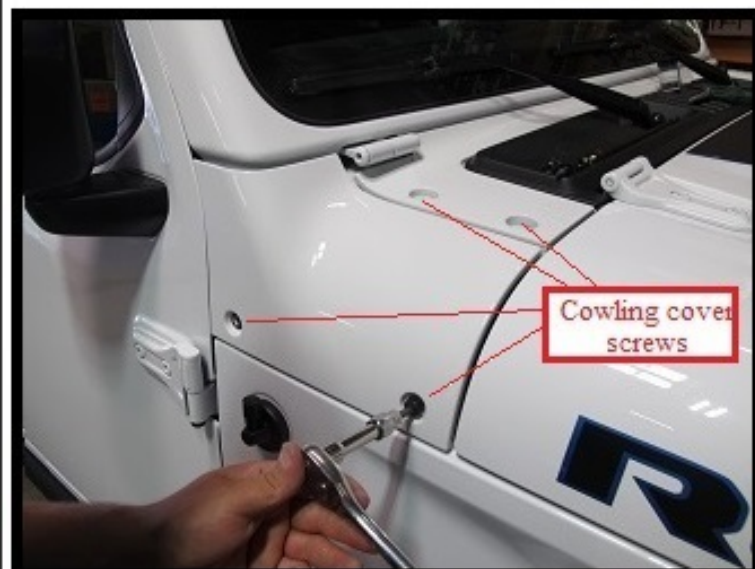
Qty. 4 | Black Nylon Shoulder Washer

Qty. 2 | 1/2" Nylock Nuts SS

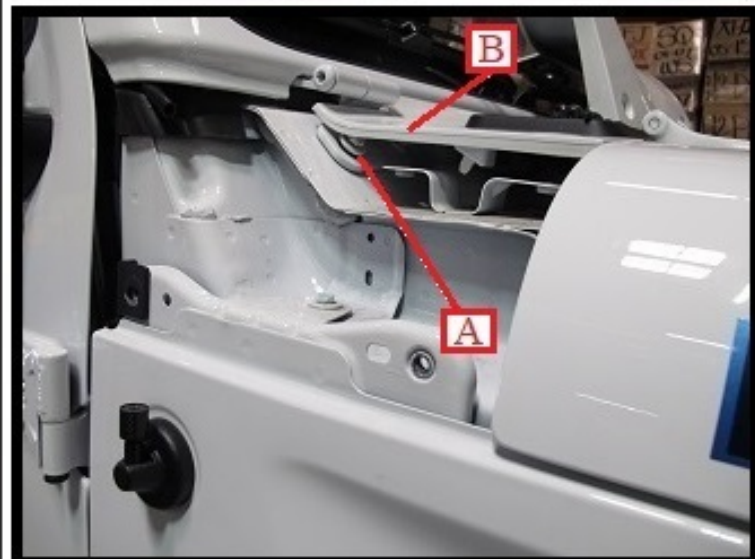
Qty. 20 | 3/8" Nylock Nuts SS

Qty. 5 | 5/16" Nylock Nuts SS

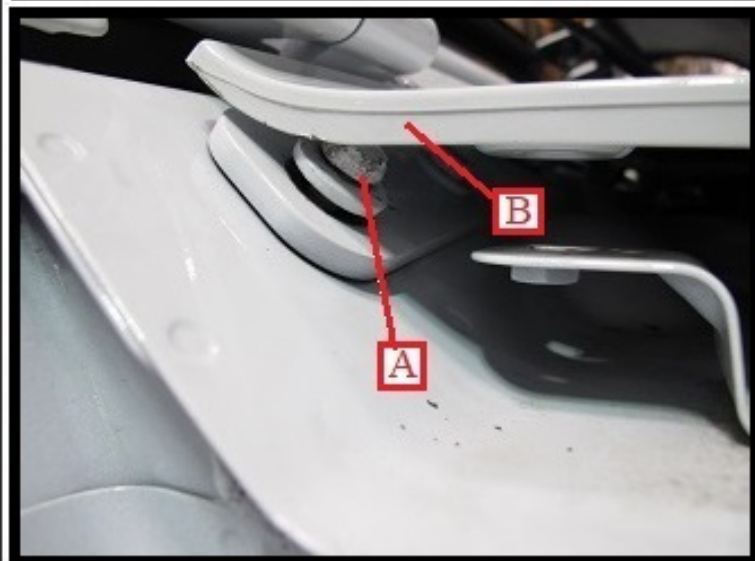
GOBI JEEP JL 4e 2 & 4 DOOR ROOF RACK GEN 1 INSTALLATION INSTRUCTIONS

**Fig. 1**

Use a #40 Torx bit and remove the 4 outside cowling cover screws as shown in Fig. 1 and Fig. 2.

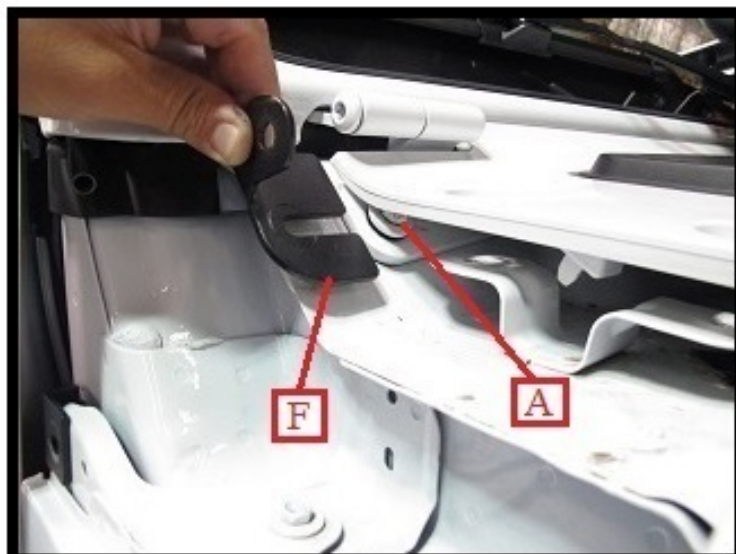
**Fig. 2**

While lifting slightly on cowling (B) to expose hinge screw (A) slide a 13mm box end wrench over the outside hinge screw (A) and loosen. Do not remove the hinge screw only loosen as shown in Fig. 3.

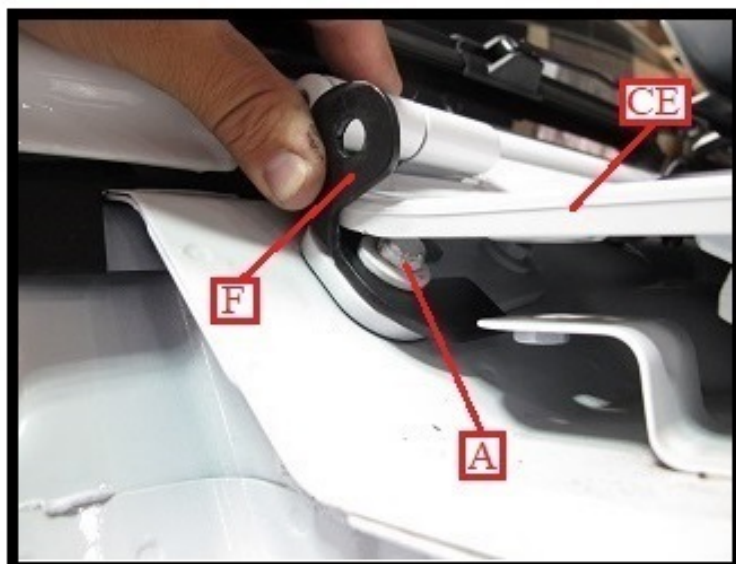
**Fig. 3**

Loosen hinge screw (A) enough to slide hinge bracket (F) located in Bag #2 of your hardware kit under screw washer (A).

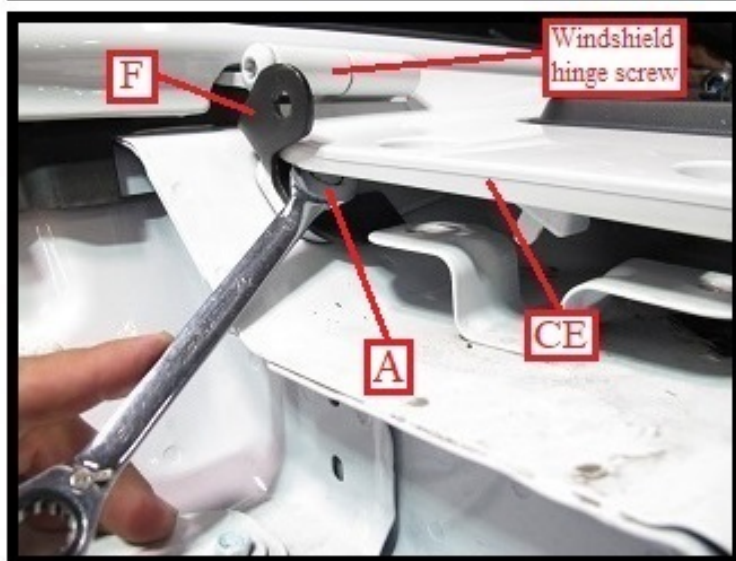
GOBI JEEP JL 4e 2 & 4 DOOR ROOF RACK GEN 1 INSTALLATION INSTRUCTIONS

**Fig. 4**

Slide the passenger side hinge bracket (F) marked with a stamped letter (P) or label (indicating Passenger side) under the hinge screw (A) as shown in Fig. 4 and Fig. 5.

**Fig. 5**

Slide hinge bracket (F) as far inward as possible and line up with cowling edge (CE) and the outside windshield hinge as shown in Fig. 5 and Fig. 6

**Fig. 6**

Line up hinge bracket (F) with cowling edge (CE) and windshield hinge screw then fully tighten hinge screw (A) shown in Fig. 5 using a 13mm box end wrench

GOBI JEEP JL 4e 2 & 4 DOOR ROOF RACK GEN 1 INSTALLATION INSTRUCTIONS

Fig. 7

Fully open the passenger side door to expose the upper door hinge as shown.

Fig. 8

Use a 15mm ratchet with long extension and remove the upper hinge screw completely as shown.

Fig. 9

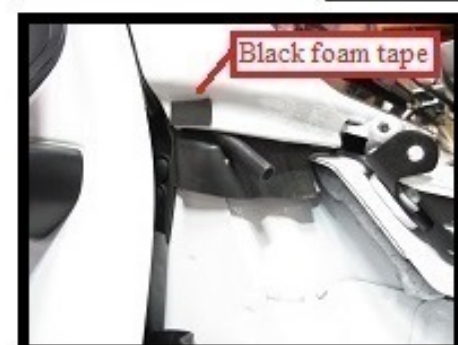
Remove body strap (S) passenger side located in Bag #2 of your hardware kit as shown above.

Fig. 10

Slide body strap (S) in between the door and body as shown in Fig. 10 above. Thread into the upper strap hole the same torx head screw removed earlier from the outside cowling as shown in Fig. 11. Finger tighten loosely at this time. With the driver side door still open thread in the upper door hinge screw as shown in Fig. 12 through strap (S). Pull down on body strap (S) in the direction of the arrow and finger tighten only at this time.

Fig. 11**Fig. 12****Fig. 13**

Remove cowling screw as shown above in Fig. 13

Fig. 14

Place a piece of 1" x 1/2" black foam tape located in Bag #4 at the location shown in Fig. 14 and Fig. 15

Fig. 15

Install cowling as shown above using only the top 2 screws. Leave out the lower cowling screws as shown.

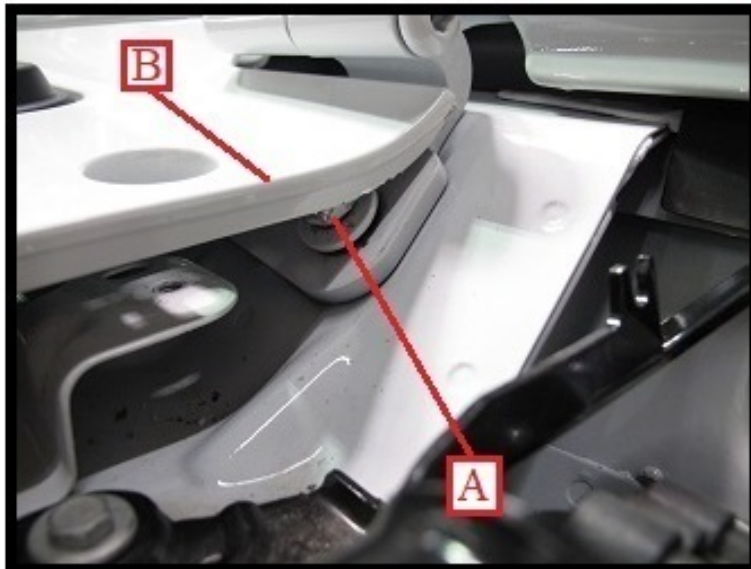
GOBI JEEP JL 4e 2 & 4 DOOR ROOF RACK GEN 1 INSTALLATION INSTRUCTIONS

**Fig. 1a**

Use a #40 Torx bit and remove the 4 outside driver side cowling cover screws as shown in Fig. 1a and Fig. 2a.

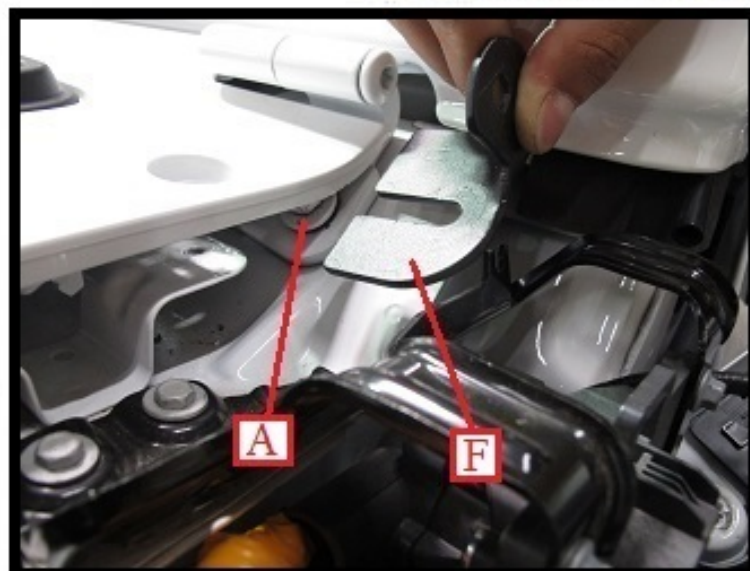
**Fig. 2a**

Pull the cowling cover away from the side body as shown but take care not to pull the wire harness (WH) aggressively. Have a helper hold the cowling in hand during the installation process or hang gently to the side.

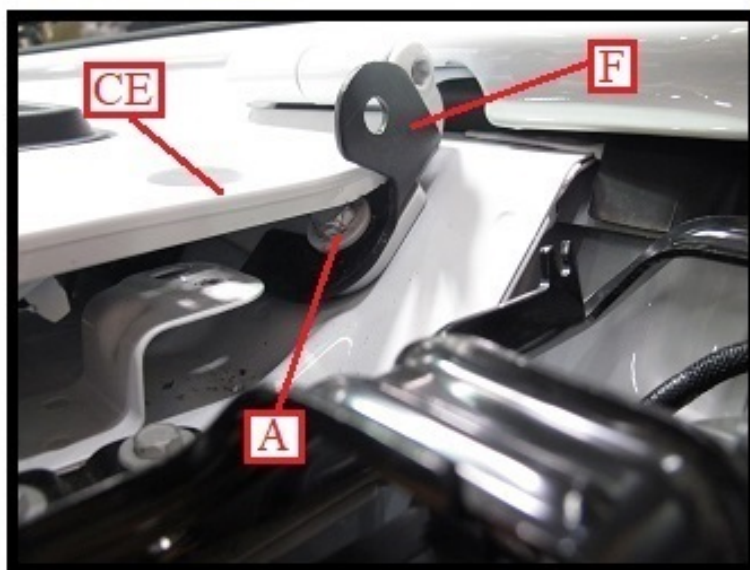
**Fig. 3a**

While lifting slightly on cowling (B) to expose hinge screw (A) slide a 13mm box end wrench over hinge screw (A) and loosen. Do not remove the hinge screw only loosen as shown in Fig. 3a.

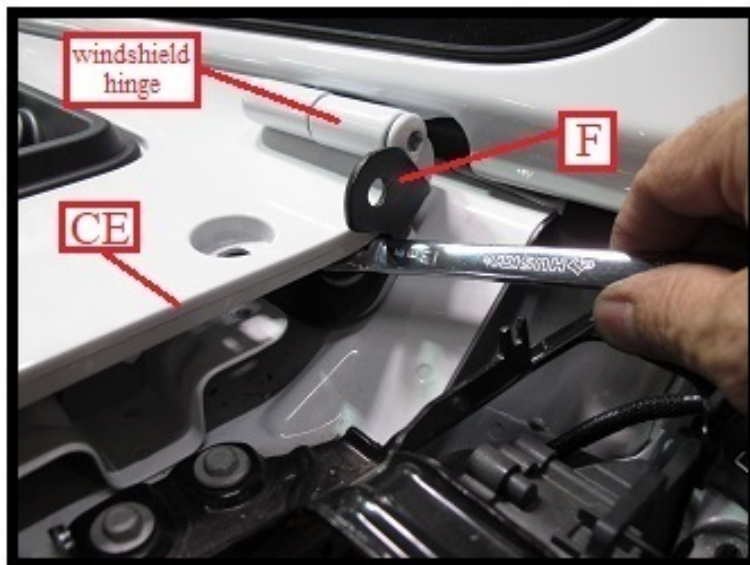
GOBI JEEP JL 4e 2 & 4 DOOR ROOF RACK GEN 1 INSTALLATION INSTRUCTIONS

**Fig. 4b**

Slide the driver side hinge bracket (F) marked with a stamped letter (D) or label (indicating Driver side) under the hinge screw (A) as shown in Fig. 4b and Fig. 5b.

**Fig. 5b**

Slide hinge bracket (F) as far inward as possible and line up with cowling edge (CE) and the outside windshield hinge as shown in Fig. 5b and Fig. 6b.

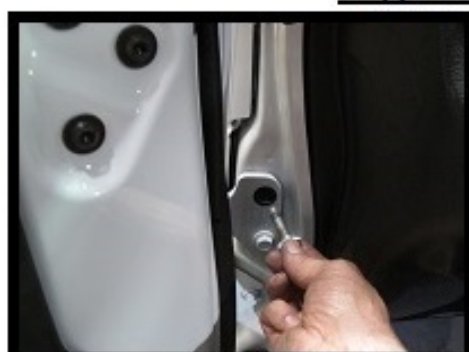
**Fig. 6b**

Line up hinge bracket (F) with cowling edge (CE) and exposed windshield hinge, then fully tighten hinge screw (A) shown in Fig. 5b using a 13mm box end wrench.

GOBI JEEP JL 4e 2 & 4 DOOR ROOF RACK GEN 1 INSTALLATION INSTRUCTIONS

Fig. 7c

Fully open the driver side door to expose the upper door hinge as shown.

Fig. 8c

Use a 15mm ratchet with long extension and remove the upper hinge screw completely as shown.

Fig. 9c

Remove body strap (S) driver side located in Bag #2 of your hardware kit as shown above.

Fig. 10c

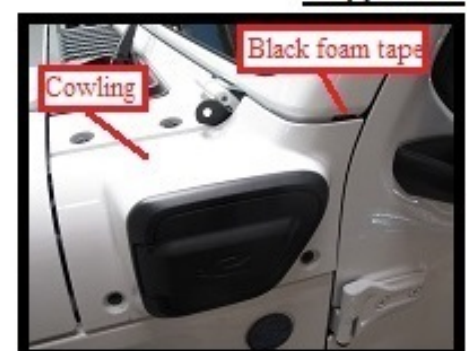
Slide body strap (S) in between the door and body as shown in Fig. 10c above. Thread into the upper strap hole the same Torx head screw removed earlier from the outside cowling as shown in Fig. 11c. Finger tighten in place at this time. With the driver side door still open, thread in the upper door hinge screw as shown in Fig. 12c through strap (S). Pull down on body strap (S) in the direction of the red arrow and finger tighten only at this time.

Fig. 11c**Fig. 12c****Fig. 13c**

Remove cowling screw as shown above in Fig. 13c.

Fig. 14c

Place a piece of 1" x 1/2" black foam tape located in Bag #4 at the location shown in Fig. 14c and Fig. 15c.

Fig. 15c

Install cowling as shown above using only the top 2 screws. Leave out the lower cowling screws as shown.

GOBI JEEP JL 4e 2 & 4 DOOR ROOF RACK GEN 1 INSTALLATION INSTRUCTIONS

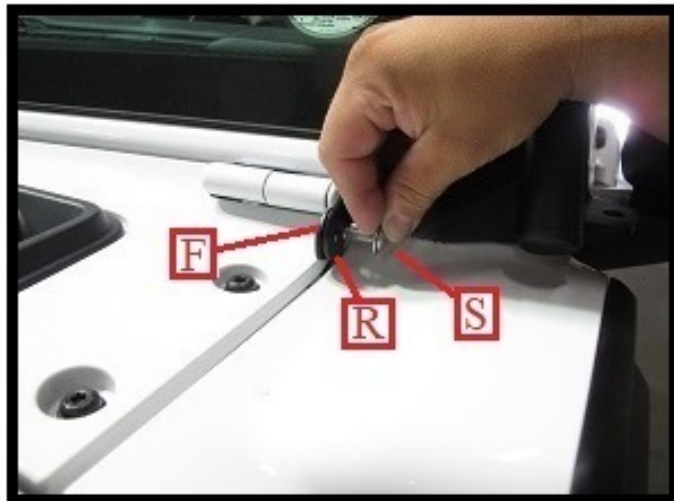
Fig. 16**Fig. 17**

Install the Gobi light bar (B) passenger side first. Make certain to place a black aluminum spacer (1) located in Bag #3 of your hardware kit, into the cowl recess hole shown in Fig. 17.

Fig. 18**Fig. 18a**

Remove 1- M8 x 40mm button head Allen screw, 1- 5/16" lock washer and 1- 5/16" thick flat washer (S) located in Bag #3 of your hardware kit. Thread screw, lock washer and thick flat washer into light bar, black aluminum spacer (1) then into vehicle body as shown in Fig.18. Finger tighten only at this time. As shown in Fig. 18a and exploded view 18c pull light bar (B) up or down, in or out to line up light bar flange (R) with hinge bracket hole (F). Insert 1- 5/16 -18 x 3/4" button head screw and 1- 5/16" flat washer into both flange (R) and hinge bracket (F). Thread on 1- 5/16" flat washer and 1- 5/16" nylock nut and snug down in place. Leave some play between parts for later adjustment.

GOBI JEEP JL 4e 2 & 4 DOOR ROOF RACK GEN 1 INSTALLATION INSTRUCTIONS

Fig. 19**Fig. 20**

As shown in Fig. 19 pull the driver side of light bar (B) over the driver side hinge bracket (F) shown by a red arrow. Line up flange (R) of light bar (B) with hinge bracket hole (F) shown in Fig. 19 and Fig. 20. Insert 1- 5/16-18 x 3/4" button head Allen screw along with 1- 5/16" flat washer (S) located in Bag #3 into both flange (R) and hinge bracket (F) holes shown in Fig. 20.

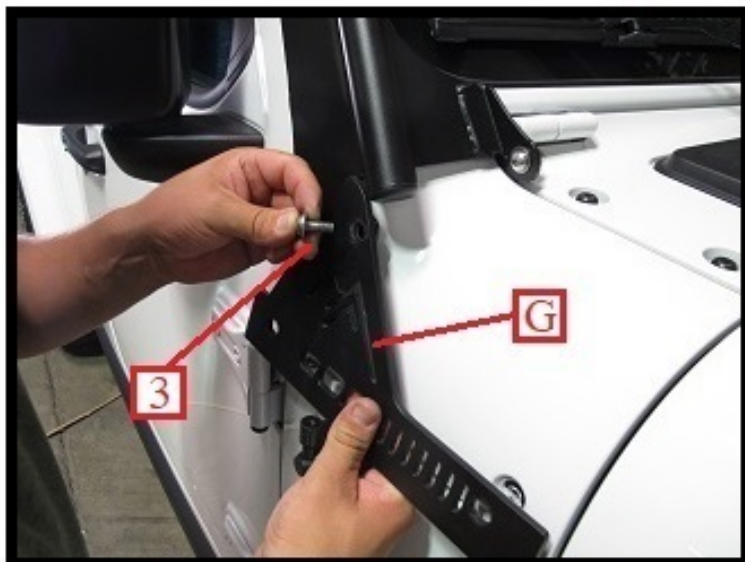
Fig. 21**Fig. 22**

As shown in Fig. 21 and Fig. 22 thread on 1- 5/16" flat washer and 1- 5/16" nylock nut onto the threaded end of screw (S). Use a 3/16" Allen wrench and 1/2" open end wrench and tighten screws so that a small amount of play is left for parts to have movement for later adjustment.

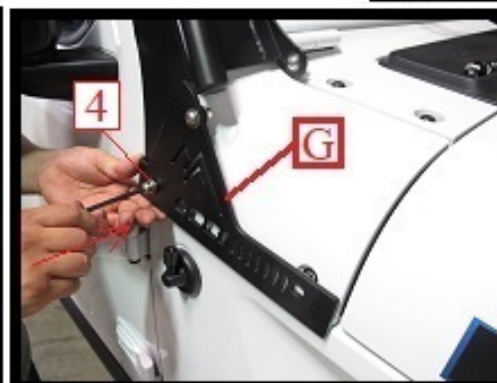
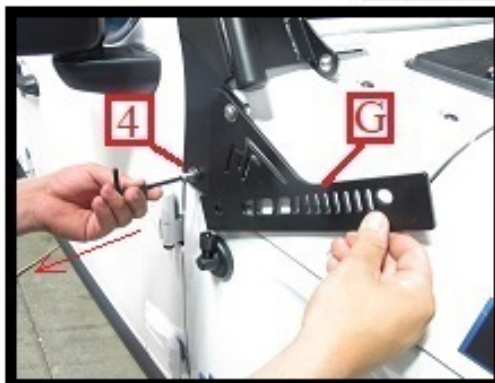
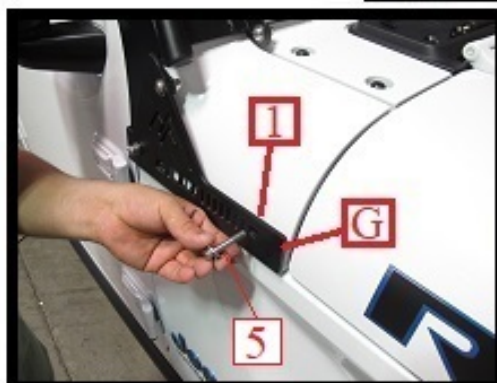
GOBI JEEP JL 4e 2 & 4 DOOR ROOF RACK GEN 1 INSTALLATION INSTRUCTIONS

Fig. 23

Remove from Bag #4 1- Brown adhesive backed wear pad (P). Peel off the adhesive protective cover and stick to the windshield frame directly under the rubber bumper of the light bar as shown in Fig. 23. Apply the same procedure to the opposite side.

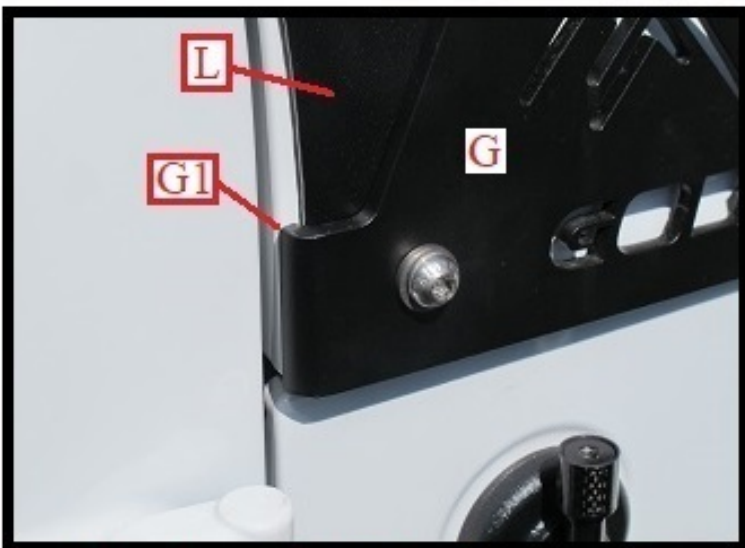
Fig. 24

Remove the passenger side light bar cover plate (G) from your hardware box. Install the passenger side cover plate (G) onto the light bar as shown in Fig. 24 using 1- 5/16-18 x 3/4" Allen head screw and 1- 5/16" flat washer (3). Use another 5/16" flat washer and 1- 5/16" nylock nut to secure in place. Snug down only at this time. Leave some play between parts for later adjustment.

Fig. 25**Fig. 26****Fig. 27**

Remove the lower light bar M8 x 40mm mounting screw (4) as shown in Fig. 25. Then slide cover plate (G) over the top of lower light bar and line up holes as shown in Fig. 26. Thread back mounting screw (4) into cover plate (G) and lower light bar and leave finger tight only. Remove 1- black aluminum spacer (1) from Bag #3 and slip behind cover plate (G) as shown in Fig. 27 in the second cowling recess hole. Thread another M8 x 40mm Allen head screw, 1- 5/16" lock washer and 1- 5/16" thick flat washer (5) located in Bag #3 into cover plate (G) and snug down only at this time. Leave some plate for adjustment.

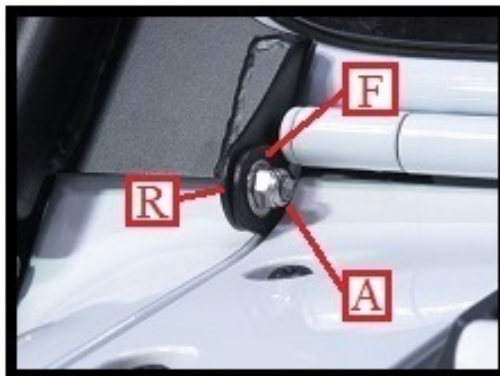
GOBI JEEP JL 4e 2 & 4 DOOR ROOF RACK GEN 1 INSTALLATION INSTRUCTIONS

Fig. 27a**Fig. 28**

Have one person pull back on the top of light bar (B) towards the vehicle as shown in Fig. 27a by a yellow arrow. Keep pressure on the light bar until all installation instructions have been completed from Fig. 28 through Fig. 32a, at which time the light bar can be released. Make certain cover plate (G) hook end (G1) is on the back of light bar base plate (L) as shown in Fig. 28.

Fig. 29**Fig. 30****Fig. 31**

With the hook section of cover plate (G) over the back of the light bar base plate (L). Slide cover plate (G) in the direction of the red arrow towards the front of the vehicle as much as possible as shown in Fig. 29. While holding cover plate (G) fully forward tighten the M8 x 40mm screw (4) using a 5mm Allen wrench as shown in Fig. 29. Make certain cover plate (G) is even with the body lines and fully tighten the second M8 x 40mm screw (5) as shown in Fig. 30. Proceed to the top of cover plate (G) and fully tighten the 5/16 inch Allen screw (6) using a 3/16 inch Allen wrench and 1/2 inch box end wrench, shown in Fig. 31.

Fig. 32

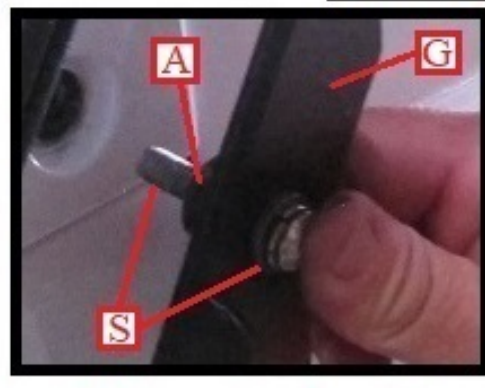
While one person is still holding light bar (B) back as shown in Fig. 27a, fully tighten the 5/16 inch Allen screw and nylock nut (A) shown in Fig. 32

**Fig. 32a**

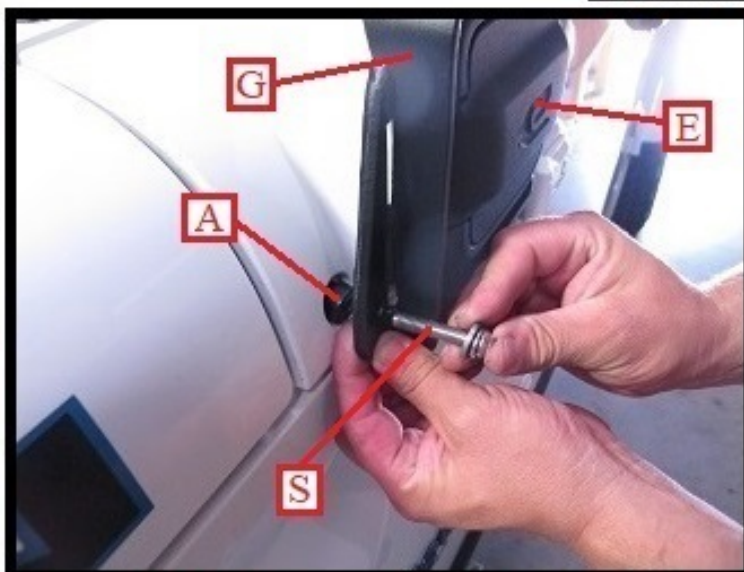
Refer to Fig. 12 and Fig. 32a then loosen screw (Sa). While someone is pulling back on light bar as shown in Fig. 27a strap (S) will drop then fully tighten screw (Sa).

PASSENGER SIDE LIGHT BAR INSTALL COMPLETED

GOBI JEEP JL 4e 2 & 4 DOOR ROOF RACK GEN 1 INSTALLATION INSTRUCTIONS

Fig. 27a**Fig. 28a****Fig. 29a**

As shown in Fig. 27a and Fig. 30a remove the driver side light bar cover plate (G) from your hardware kit. Remove 1- M8 x 40mm Allen head screw, 1- 5/16" lock washer, 1- 5/16" thick flat washer (S) and insert into cover plate lower right hand mounting screw hole as shown in Fig. 27a and Fig. 29a. Add 1- black aluminum spacer (A) behind cover plate (G) and over M8 x 40mm screw shown in Fig. 29a. Shown in Fig. 27a and Fig. 30a, slide cover plate (G) over the Jeep JL electrical access door (E). Position the upper slotted section of plate (G) under the light bar lower plate (L) shown in Fig. 28a. At the same time position the upper section (G1) of plate (G) over the light bar mounting plate (U) shown in Fig. 27a and Fig. 28a. Shown in Fig. 27a, Fig. 29a and Fig. 30a thread the M8 x 40mm screw (S) into the vehicle body. Do not fully tighten, leave some play for later adjustment.

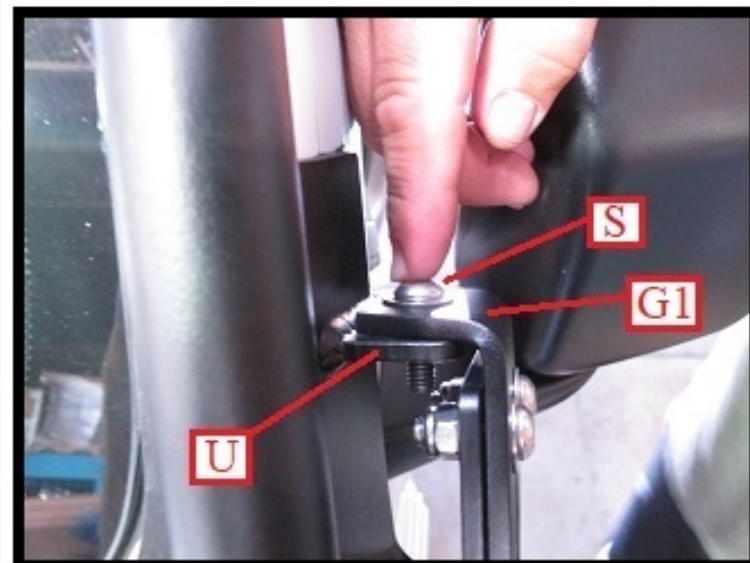
Fig. 30a**Fig. 31a**

As shown in Fig. 31a, thread 1- M8 x 40mm button head screw, 1- 5/16" lock washer and 1- 5/16" thick flat washer (S) and thread through mounting plate (G). Add 1- black aluminum space (A) behind mounting plate (G) into the vehicle cowl recess hole then thread entire assembly into vehicle body using a 5mm Allen wrench located in Bag #3 of your hardware kit. Snug screw down only, leave some play for later adjustment.

GOBI JEEP JL 4e 2 & 4 DOOR ROOF RACK GEN 1 INSTALLATION INSTRUCTIONS

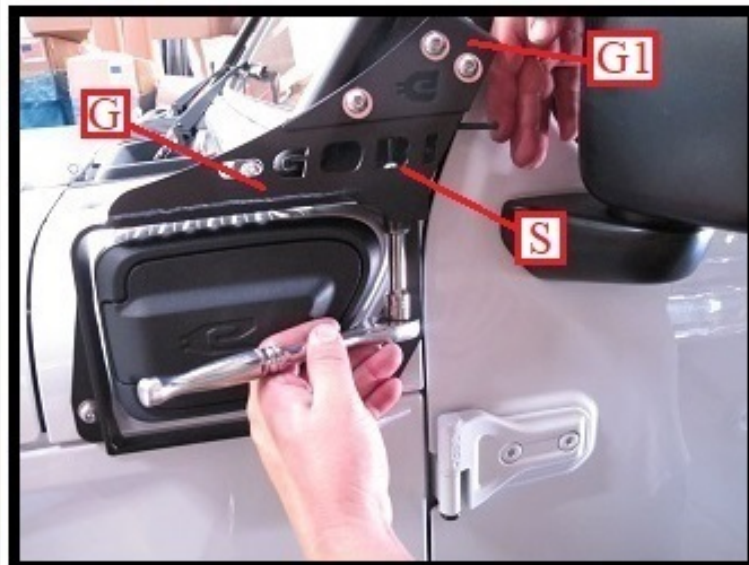
Fig. 32a**Fig. 33a**

Remove from Bag #3, 1- 5/16-18 x 1" button head Allen screw and 1- 5/16" flat washer (S) and insert into mounting hole (L) as shown in Fig. 32a. Shown in Fig. 33a, thread onto the bottom of screw (S), 1- 5/16" flat washer and 1- 5/16" nylock nut. Use a 1/2" ratchet drive and a 3/16" Allen wrench supplied in Bag #3 to snug screw (S) in place. Leave some play for later adjustment.

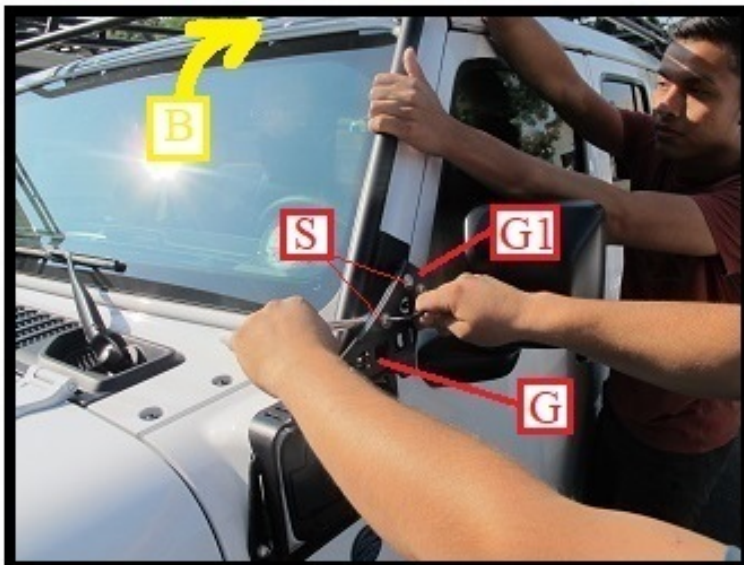
Fig. 34a**Fig. 35a**

Remove from Bag #3, 1- 5/16-18 x 1" button head Allen screw and 1- 5/16" flat washer (S) and insert down into top plate (G1) and into upper light bar mount flange (U) as shown in Fig. 34a. Thread on 1- 5/16" flat washer and 1- 5/16" nylock nut to the end of screw (S) previously installed. Shown in Fig. 35a, use a 3/16" Allen wrench and a 1/2" open or closed end wrench and snug down screws only at this time. Leave some plate for later adjustment.

GOBI JEEP JL 4e 2 & 4 DOOR ROOF RACK GEN 1 INSTALLATION INSTRUCTIONS

Fig. 36c

As was shown in Fig. 32a and Fig. 33a. Fully tighten screws (S) shown in Fig. 36c above using a 3/16" Allen wrench located in hardware Bag #3 and a 1/2" ratchet with short extension. Apply at least 7 to 10 lbs. of hand torque.

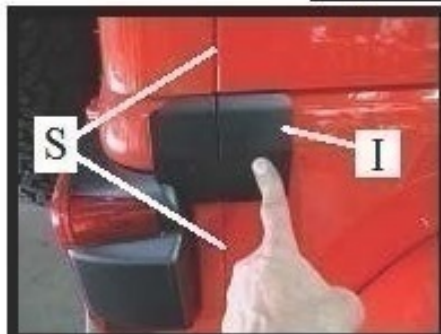
Fig. 37c

Have a second person pull back on light bar (B) shown by the yellow arrow in Fig. 37c. Align top plate (G1) with main plate (G) as shown in Fig. 36c. Then fully tighten all 3 screws (S) shown in Fig. 37c and Fig. 38c using a 3/16" Allen wrench and 1/2" box or open-end wrench.

Fig. 38c**Fig. 39c****Fig. 40c**

While still pulling light bar (B) towards the rear of the vehicle as shown in Fig. 37c. Fully tighten screw (S) on plate (G1) as shown in Fig. 39c and screw (S1) on the lower light bar flange (F) as shown in Fig. 38c. Continue to fully tighten both screws (S) shown in Fig. 40c. Use approximately 7 to 10 lbs. of hand torque to tighten all screws. Driver side light bar install is complete.

GOBI JEEP JL 4e 2 & 4 DOOR ROOF RACK GEN 1 INSTALLATION INSTRUCTIONS

Fig. 33**Fig. 34****Fig. 35**

Clean the circled area of the body in Fig. 33 passenger and driver sides with denatured alcohol. Remove the passenger side isolator wear plate (I) from Bag #4 of your hardware kit. Fit isolator wear plate (I) as shown in Fig. 34 so that the wear plate slots line up with the vertical body and hardtop grooves (S). Once you are familiar with the fit remove the protective adhesive cover shown in Fig. 35 and press in place. Apply the same procedure to the opposite side.

Fig. 36

Apply the same procedure in Figures 33 thru 35 to the drivers side as shown in Fig. 36.

**Fig. 37****Fig. 38****Fig. 39**

Remove the rear driver wheel well splash guard (M) shown in Fig. 37. Use an 8mm socket drive and remove all 3 screws shown in Fig. 38 and place aside as shown in Fig. 39.

GOBI JEEP JL 4e 2 & 4 DOOR ROOF RACK GEN 1 INSTALLATION INSTRUCTIONS

Fig. 40



Fig. 41



Refer to Fig. 40 and Fig. 41. Figure 40 represents the Jeep JL Rubicon splash guard support bracket (A) and Fig. 41 represents the Jeep JL Sahara and JL Sport splash guard support bracket (B). If your Jeep JL has the splash guard support bracket (B) shown in Fig. 41 continue reading on to complete your installation. If your Jeep JL has the splash guard support bracket (A) shown in Fig. 40 skip to Fig. 55 and continue with your installation until completed.

GOBI JEEP JL 4e 2 & 4 DOOR ROOF RACK GEN 1 INSTALLATION INSTRUCTIONS

Fig. 42

Rear driver side Jeep JL
Sahara or Sport bumper

Fig. 43

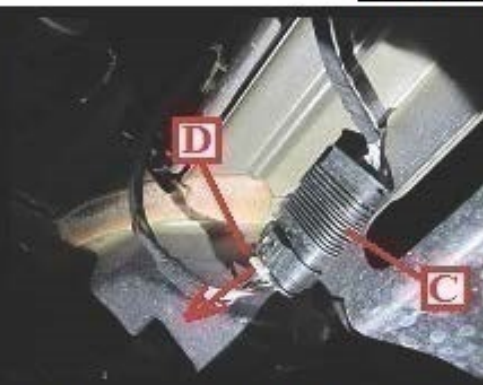
Remove passenger and driver side
splash guards by removing 3 screws (A)
shown above with an 8mm socket

Fig. 44

Remove splash guard support bracket
(SG) by removing 4 screws (B) as shown
above using a 16mm socket

Fig. 45

Just above the rear splash guard support
bracket you will find the rear bumper
sensor connection (C) shown above

Fig. 46

Pull out on white tab (D) in the direction of the red arrow shown in Fig. 46 to
release connection lock then pull apart sensor connection (C) as shown in Fig. 47

Fig. 47**Fig. 48**

Pull out sensor connection (C)
anchored to body as shown above and
allow to hang freely

Fig. 49

Remove screw (E) above both driver and
passenger sides using a 10mm socket
drive

Fig. 50

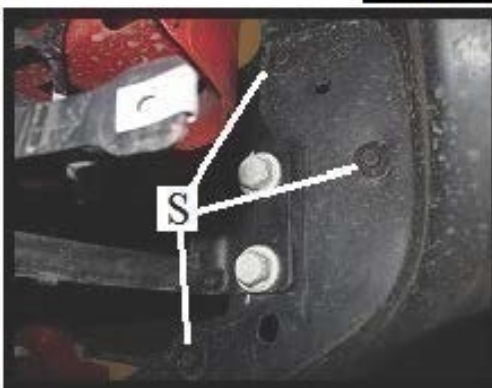
Remove 2 nuts (F) shown above
both driver and passenger sides using
a 16mm socket or box end wrench

GOBI JEEP JL 4e 2 & 4 DOOR ROOF RACK GEN 1 INSTALLATION INSTRUCTIONS

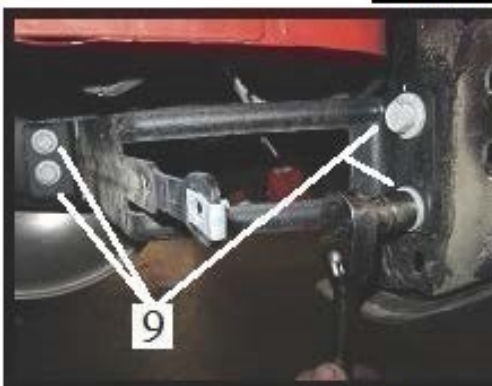
Fig. 51

Tilt rear bumper ends (G) down towards the floor then pull back and remove the rear bumper as shown above. Refer to Fig. 58 and continue the Gobi rack installation.

GOBI JEEP JL 4e 2 & 4 DOOR ROOF RACK GEN 1 INSTALLATION INSTRUCTIONS

Fig. 52**Fig. 53****Fig. 54**

Remove rear bumper driver side end cap (E) shown in Fig. 52. Use the same 8mm drive as used in Fig. 38 with a 6" extension and take off all 3 screws (S) shown in Fig. 53. Place bumper end cap and screws aside for later installation.

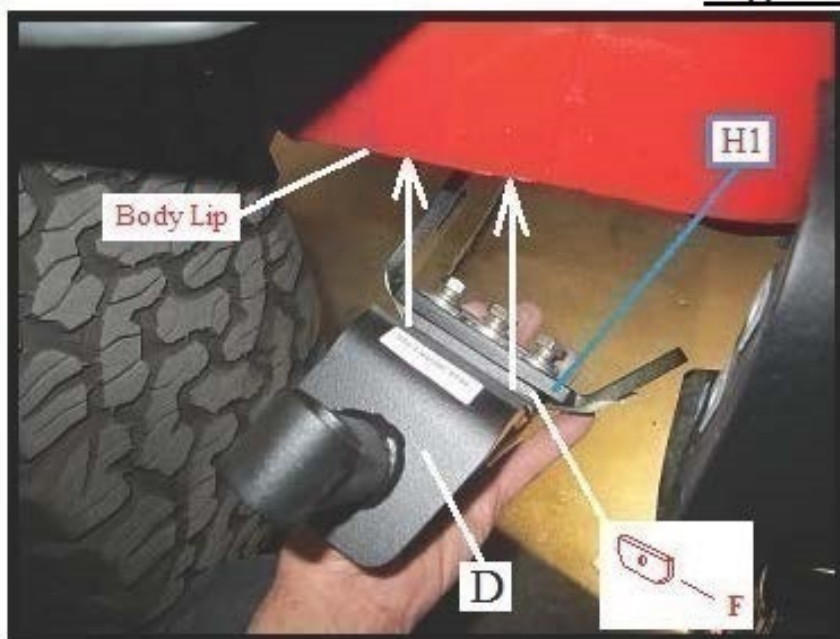
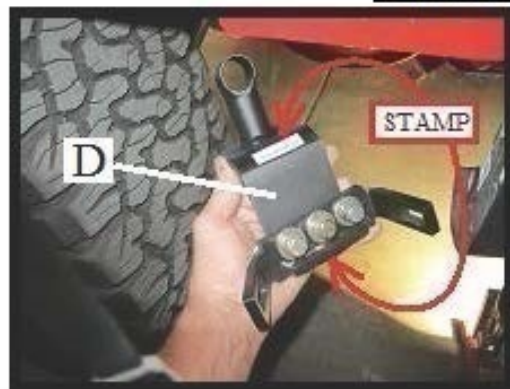
Fig. 55**Fig. 56****Fig. 57**

Remove rear wheel well splash guard support (SGS) shown in Fig. 55. Use a 16mm socket drive and take off all 4 screws (9) shown in Fig. 56. The process applies to Jeep JL Sahara and Jeep JL Sport models. Place all screws and splash guards support bracket aside for reinstallation after the Gobi tower installation.

Fig. 58**Fig. 59**

Use denatured alcohol and clean the circled area outside and inside of the body as shown in Fig. 58 and Fig. 59.

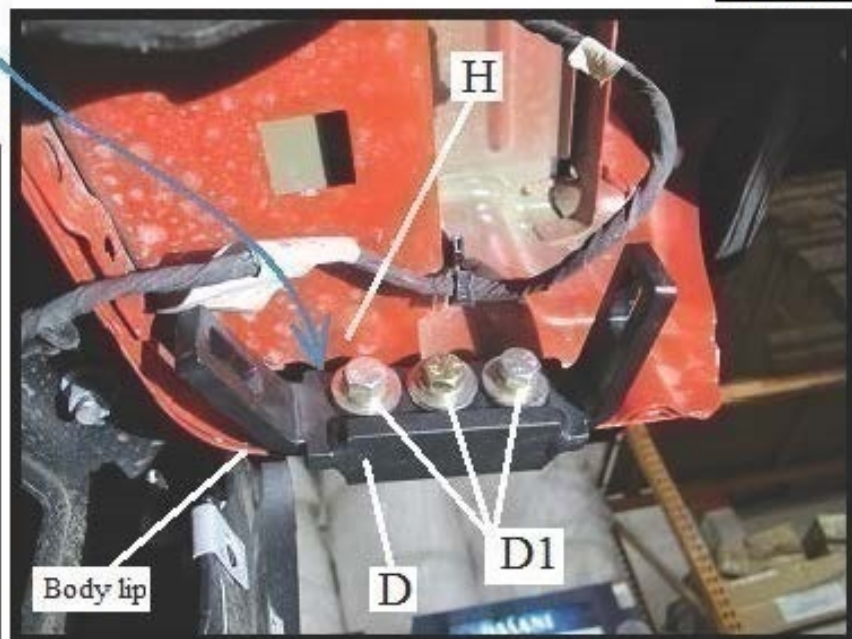
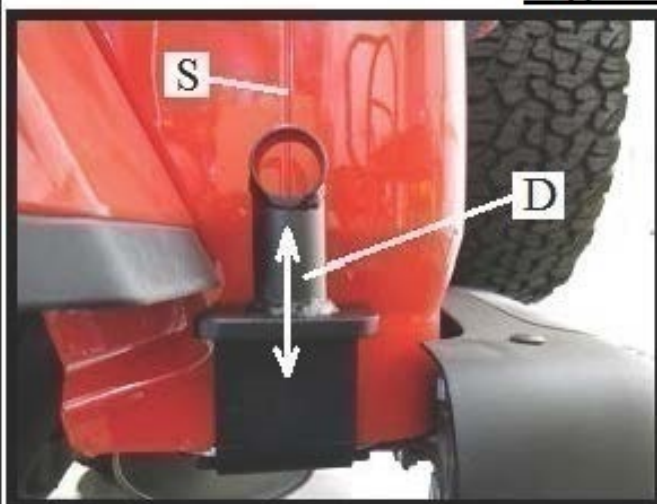
GOBI JEEP JL 4e 2 & 4 DOOR ROOF RACK GEN 1 INSTALLATION INSTRUCTIONS

Fig. 61**Fig. 60**

Remove the Driver side tower (D) indicated by a stamp or label located on the underside or top of the tower shown in Fig. 60. Located in your hardware box.

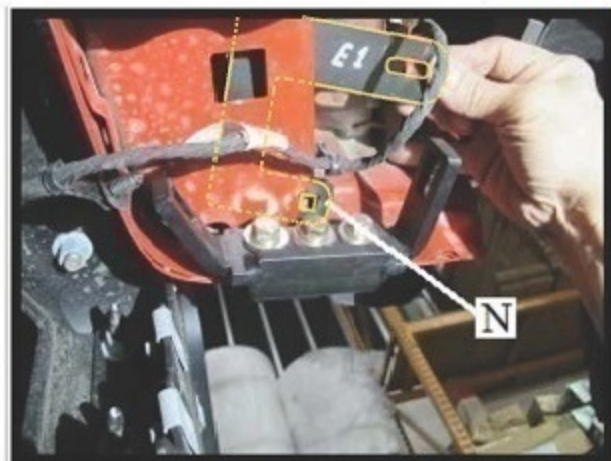
Contact must be made between body panel (H) and top of horseshoe shaped tower support (H1)

Slide Tower (D) up onto the rear body lip as shown in Fig. 61 and Fig. 62 with pinch plate (F) positioned on the inside of the body. Do not remove the masking tape as the tape is holding the pinch plate in the correct position.

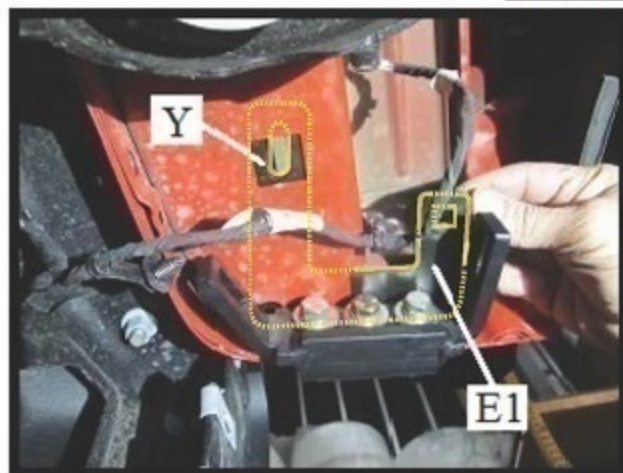
Fig. 63**Fig. 62**

Make certain tower (D) is in line with the rear body seam (S) as shown in Fig. 62. Also "VERY IMPORTANT" make certain the top of tower horseshoe shaped support (H1) shown in Fig. 61, is positioned as far up on the body and body lip as possible shown in Fig. 63. Fully tighten all 3 screws (D1) at this time using a 9/16" box end wrench.

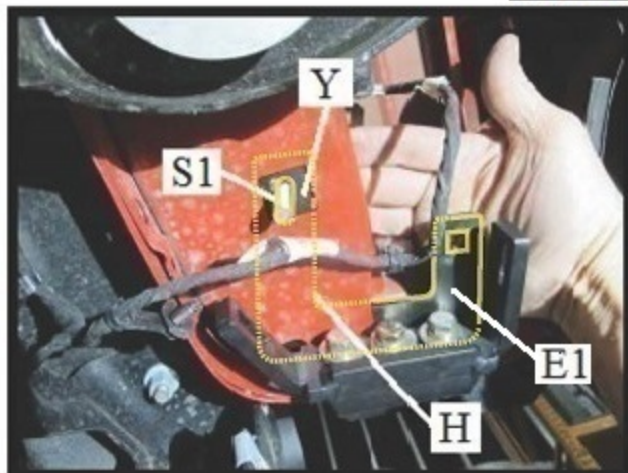
GOBI JEEP JL 4e 2 & 4 DOOR ROOF RACK GEN 1 INSTALLATION INSTRUCTIONS

Fig. 64**Fig. 65**

Remove nut plate (E1) shown in Fig. 64 from your hardware kit. Slip the nut plate end (N) in the slot above Tower (D) as shown in Fig. 65.

Fig. 66

Continue turning nut plate (E1) until the slotted end (Y) can be seen through the square hole shown in Fig. 66.

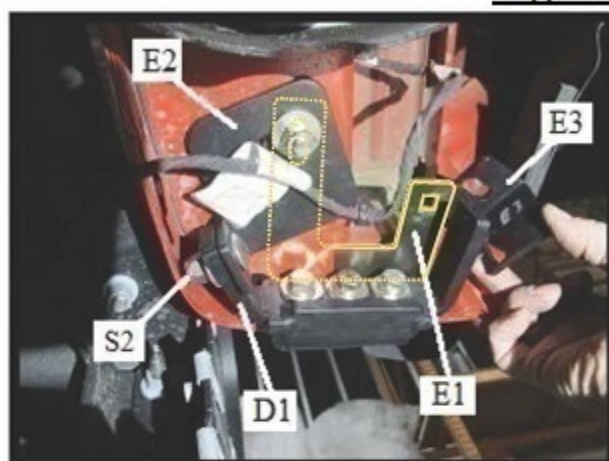
Fig. 67

Remove from Bag #3, 1- 3/8-16 x 1-1/4" carriage screw (S1) and place it from the top down into the slotted end (Y) of nut plate (E1) and lower body panel (H) as shown in Fig. 71. Make certain that the square head of the carriage screw (S1) is seated into nut plate slot as shown.

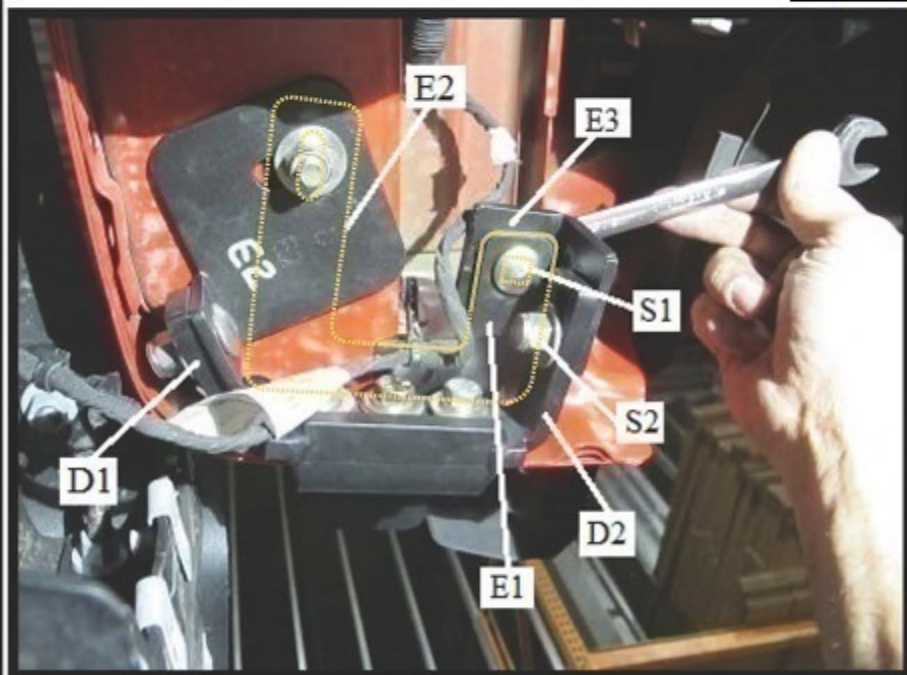
GOBI JEEP JL 4e 2 & 4 DOOR ROOF RACK GEN 1 INSTALLATION INSTRUCTIONS

Fig. 68

Remove from your hardware kit tower support plate (E2) and set in place as shown in Fig. 68. Use 1-3/8" flat washer and 1-3/8" nylock nut located in Bag #3 and thread onto screw (S1) previously installed in Fig. 67. Snug down using a 9/16" ratchet with 10" extension. Leave enough play for adjustment. Place another 3/8-16 x 1-1/4" carriage screw (S2) through support plate (E2) and into tower arm (D1) as shown in Fig. 69. Thread on 1-3/8" flat washer and 1-3/8" nylock nut shown in Fig. 69 using a 9/16" box end wrench. Leave enough play for adjustment. Do not fully tighten.

Fig. 69

Remove from your hardware kit support plate (E3) as shown in Fig. 69. Place (E3) on top of nut plate (E1) and set a 3/8-16 x 1-1/4" carriage screw (S1) up through nut plate (E1) then through support plate (E3) as shown in Fig. 70. Thread on 1-3/8" flat washer and 1-3/8" nylock nut on top as shown in Fig. 70. Snug down but Leave enough play for adjustment.

Fig. 70

Remove from Bag #3, 1-3/8-16 x 1-1/4" carriage screw (S2) and place through support plate (E3) then through tower arm (D2) as shown in Fig. 70. Thread on 1-3/8" flat washer and 1-3/8" nylock nut and snug down using a 9/16" box end wrench. Leave enough play for adjustment.

While another person is applying pressure to the tower against the vehicle body at the top pivot ring (PR) shown in Fig. 72. Fully tighten all remaining tower assembly screws. Apply the same procedure to the opposite side.

GOBI JEEP JL 4e 2 & 4 DOOR ROOF RACK GEN 1 INSTALLATION INSTRUCTIONS



Fig. 71

Figure 71 shows an underside view of a properly installed Gobi rear tower assembly.

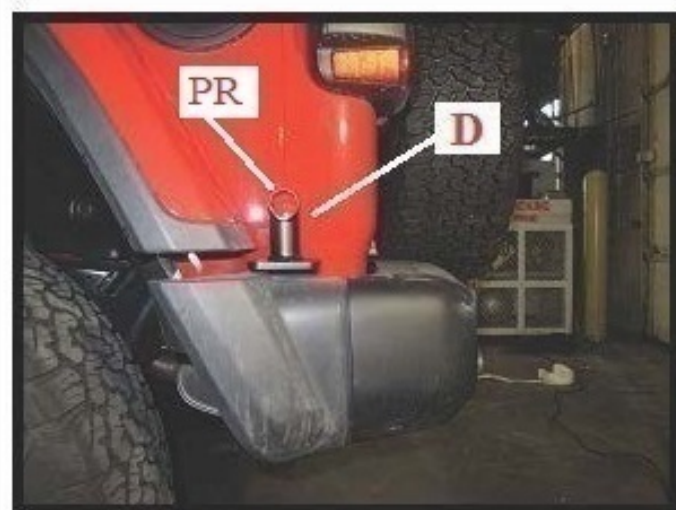


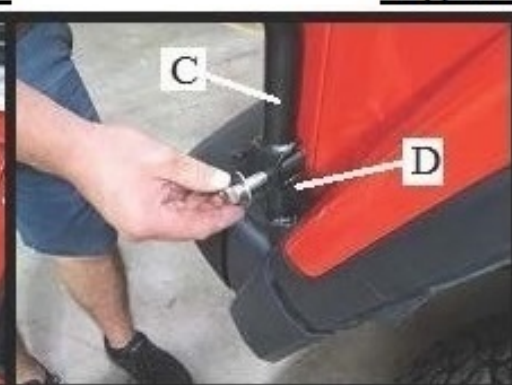
Fig. 72

Reinstall rear bumper end caps or entire rear bumper depending on the style rear bumper you have. Figure 72 represents a properly installed and completed Gobi rear driver side Tower (D) and rear bumper.

GOBI JEEP JL 4e 2 & 4 DOOR ROOF RACK GEN 1 INSTALLATION INSTRUCTIONS

Fig. 73**Fig. 74****Fig. 75**

As shown in Fig. 73 place a protective cover over your jeep top to prevent any damage. With the help of others set the Gobi rack basket (A) on top of the Jeep JL as shown in Fig. 74. Align the front of the roof rack basket with the back of light bar (B) as shown in Fig. 75. Use 4- 3/8-16 x 1" carriage screws (S2) two per side. Insert each carriage screw (S2) into the front of the light bar then into the roof rack as shown in Fig. 75. Secure in place with a 3/8" flat washer and 3/8" nylock nut and snug down using a 9/16" box end wrench. Do not fully tighten leave some play for adjustment.

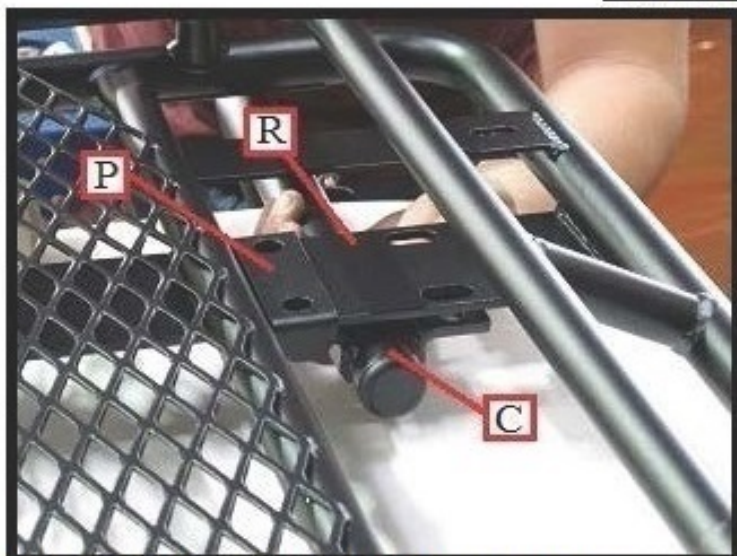
Fig. 76**Fig. 77****Fig. 78**

Set a spacer block approximately 3 inches tall under the rear of both ends of the roof rack as shown in Fig. 76. Take the passenger side rear support bar (C) shown in Fig. 77 and place under roof rack and let rest on roof top over protective cover. Align the lower end flange of the rear support bar with the passenger side rear Tower (D) as shown in Fig. 78.

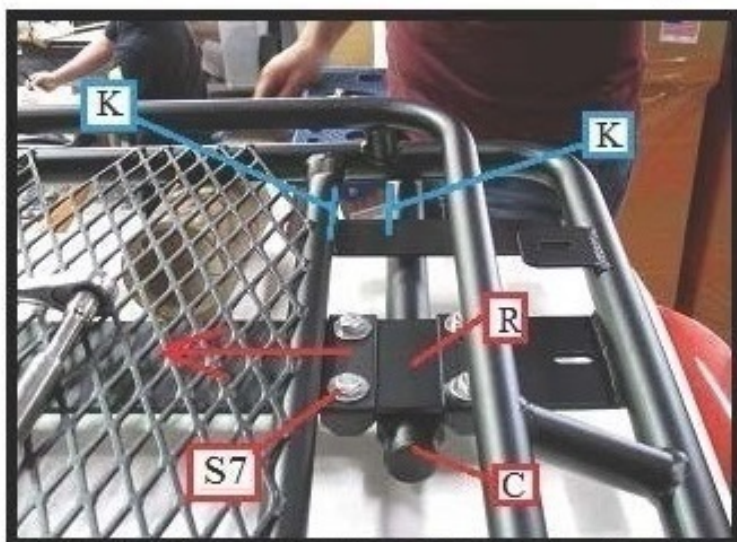
Fig. 79

Remove from Bag #3 1- 1/2-13 x 2-1/2" hex bolt (S3), 2-1/2" flat washers (S4), 2- black nylon shoulder washers (S5) and 1- 1/2" nylock nut (S6). Place them in the order shown in Fig. 79 and snug down only using a 3/4" ratchet and box end wrench. Do not fully tighten at this time.

GOBI JEEP JL 4e 2 & 4 DOOR ROOF RACK GEN 1 INSTALLATION INSTRUCTIONS

Fig. 80**Fig. 81**

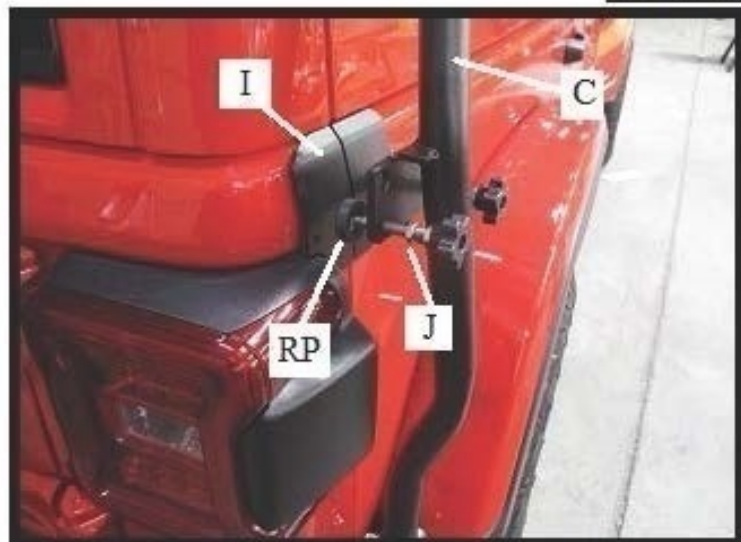
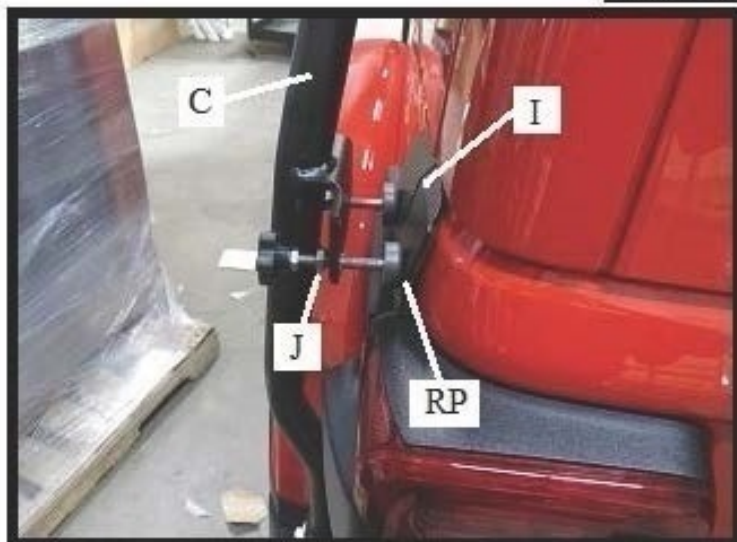
Remove 2 position plates (P) from Bag #3 and place over rear rack mounting plate (R) and over rear passenger support arm (C) as shown in Fig. 80. Remove 4- 3/8-16 x 1-1/4" hex head screws, 8- 3/8" flat washers and 4- 3/8" nylock nuts (S7) from Bag #3. Insert 4- 3/8-16 x 1-1/4" hex head screws 4- 3/8" flat washers (S7) through position plates (P) then through mounting plate (R) and through passenger support bar (C) shown in Fig. 81. Use 4- 3/8" flat washers and 4- 3/8" nylock nuts and snug down in place from the underside using 2- 9/16" box end wrenches. Do not fully tighten at this time. Leave some play for adjustment.

Fig. 82**Fig. 83**

Adjust rear support bar (C) in the direction of the red arrow as far as possible in the slots of support plate (R). Then tighten mounting screw marked (S7) using 2- 9/16" box end wrenches. Adjust rear support bar (C) by pivoting forward or rearward so that it lines up with the inner roof rack shown by 2 blue lines (K) indicating the inside tube edge of the rack and inside tube edge of rear support bar (C) shown in Fig. 82. Once aligned fully tighten all remaining screws (S7) using 2- 9/16" box end wrenches. Fully tighten Pivot screw (PS) at the bottom flange of support bar (C) shown in Fig. 83 and Fig. 88 using a 3/4" ratchet and box end wrench. Apply the same procedure to the opposite side.

Fig. 88

GOBI JEEP JL 4e 2 & 4 DOOR ROOF RACK GEN 1 INSTALLATION INSTRUCTIONS

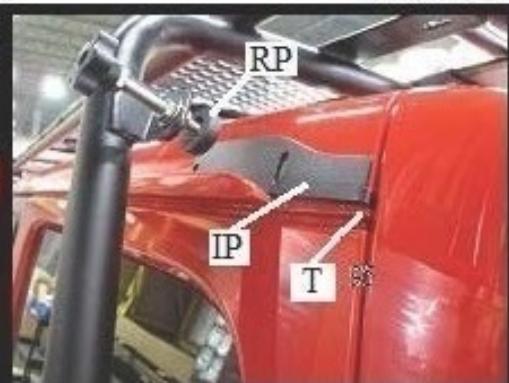
Fig. 89**Fig. 90**

After the rear support bars (C) have been fully installed and tightened as shown in Fig. 89 you will notice that the rear isolator screw rubber pads (RP) are not contacting the isolator wear plates (I). Turn each isolator screw clockwise using the black plastic knobs until they contact the black isolator wear plates (I) both driver and passenger sides. You may need to unscrew jam nut (J) shown in Fig. 89 and Fig. 90 to turn the isolator screw clockwise. Do not apply pressure to the isolators at this time.

Fig. 91**Fig. 92**

Pull out on the rear passenger support bar in the direction of the red arrow each time you are turning the isolator screw inwards or clockwise. Pulling out on the rear support bar during each turn makes it possible to easily add pressure to each isolator screw. Turn each isolator screw clockwise at least 3 to 4 full turns both the driver and passenger sides. This will apply pressure to the roof rack support preventing wobble and sway. After both isolator screws have been tightened use a 1/2" open end wrench and tighten each jam nut (J) as shown in Fig. 92 approximately 1/2 turn. This will prevent the isolator screw from coming loose during transport.

GOBI JEEP JL 4e 2 & 4 DOOR ROOF RACK GEN 1 INSTALLATION INSTRUCTIONS

Fig. 93Fig. 94Fig. 95

Make sure both the passenger and driver upper isolators rubber pads (RP) are sitting approximately 1/2" or more away from the hard top as shown in Fig. 93 and Fig. 95. Remove the upper isolator plates (IP) passenger and driver from Bag #4. Place the driver side isolator plate (IP) as shown in Fig. 93 over the roof top gutter and fit the tab end (T) into the groove of the hard top shown best in Fig. 95. After you have become familiar with the fit, clean the area of the hard top where the isolator pad will sit with denatured alcohol. Remove the protective adhesive back cover as shown in Fig. 94 then place the isolator wear plate (IP) back in place onto the hardtop over the gutter and set tab (T) into the groove of the hardtop shown in Fig. 95. Apply the same procedure to the opposite side.

Fig. 96Fig. 97Fig. 98

After both the passenger and driver side isolator plates (IP) have been installed, adjust both isolator screws (RP) so that they contact each isolator plate as shown in Fig. 96. Apply some pressure to each isolator screw onto the isolator plate. Serious pressure to each isolator is not necessary. The purpose of the upper isolator screws (RP) is to prevent upper rack sway when heavy cargo is present. Once both isolator screws have been adjusted, fully tighten both isolator jam nuts (J) as shown in Fig. 96 and Fig. 97 using two 1/2" opened end wrenches. Refer to Fig. 98 and move to the front of the roof rack. Lift up roof rack (A) as shown by the red arrow as much as possible. Then fully tighten all four 3/8-18 x 1" carriage screws (S2) using a 9/16" box end wrench both passenger and driver sides. Check all screws over entire roof rack to make certain they are properly tightened and secured. Refer to page 10 Fig. 26, when the Gobi Jeep JL roof rack is completed you may notice a gap between the rubber bumper (RB) and the windshield frame. This is to be expected after the entire assembly is fully tightened. Over a short period of time the Gobi rack will become settled in place and the gap between the rubber bumper and windshield frame may become smaller or just stay as is, this is normal.

GOBI JEEP JL 4e 2 & 4 DOOR ROOF RACK GEN 1 INSTALLATION INSTRUCTIONS



GOBI ROOF RACK INSTALLATION COMPLETED

CAUTION: * DO NOT REST THE GOBI ROOF RACK ON THE REAR BUMPER AS DAMAGE CAN RESULT
* EXCESSIVE SPEEDS OVER ROUGH TERRAIN WITH OR WITHOUT A FULLY LOADED ROOF RACK ARE NOT RECOMMENDED AS DAMAGE CAN OCCUR TO ROOF RACK OR VEHICLE.

Recommended Attachments for soft top use:

- A) Gobi "Mini Wind deflectors" part #GJW-MWD if no forward LED lights are installed
- B) "Quick Release" part #GJLSK1SRIL for easy and quick release of the roof rack
- C) "Sun Roof Insert" part #GJLSRI
- D) "Soft top protective rubber trim for roof rack noise suppression" part #GJLRX103BT
- E) "Soft top protective rubber trim for sun roof insert noise suppression" part #GJLSRIX103BT

To purchase these or other Gobi attachments please contact a Gobi online dealer or Gobi Racks direct at 1-720-479-9372 or e-mail to sales@gobiracks.com Thank you for your purchase

INTELLIGENT DESIGNS 2000 CORPORATION

This limited one year warranty covers ONLY Intelligent Designs 2000, Corporation ("ID2000") products. Please review the terms and conditions of the limited warranties below.

LIMITED ONE YEAR WARRANTY

All warranties and representations, except as set out below, are hereby disclaimed, (including fitness for the purchaser's intended use or purpose and merchantability), all products being sold AS IS, without warranty beyond that made herein, with the purchaser assuming: 1) the entire risk as to the quality and performance of the goods, 2) the cost of any repairs not covered herein.

Intelligent Designs 2000 Corporation warrants, as limited herein, to the original purchaser that its product which have been properly installed per provided instructions are free from defects in material and/or workmanship. At Intelligent Designs 2000 option, the purchaser's remedy hereunder shall be limited to repair or replacement of defective parts returned to the place of purchase or to Intelligent Designs 2000 at the purchaser's expense.

Intelligent Designs 2000 warranty, as herein, shall only be effective while the original purchaser owns the vehicle on which the product or products was installed and shall not apply if the product has been removed from the original vehicle. Intelligent Designs 2000 warranty is void if any damage to the product or products is due to misuse, abuse, neglect, accident, improper installation, or contact with on-road or off-road hazards, product modification, improper or inadequate maintenance or any use contrary to the instructions accompanying the product. Intelligent Designs 2000 warranty only covers the cost of the defective part and not the cost of removal, installation, and painting or other incidental or consequential charges or damages, or personal injury damages, and does not cover use of any product on racing vehicles. Intelligent Designs 2000's warranty is not transferable from the original purchaser.

THIS LIMITED WARRANTY DOES NOT APPLY TO:

1. Damages or problems that result from shipping, installation, maintenance, or separate system components.
2. Damages or problems that result from misuse, abuse, operation outside environmental specifications or contrary to the requirements or precautions in the installation instructions, accident, lightning strikes or other natural causes, unauthorized modification or alteration, incorrect electrical current or voltage, other causes not arising out of defect in material or workmanship.
3. Therefore, the cost of repair or replacement of such defective product shall be borne by the customer.

To assure product quality, Intelligent Designs 2000 reserves the right to change product designs, materials, specifications and finishes without prior notice to customers. Intelligent Designs 2000's warranty gives you specific legal rights and you may also have other rights, which vary from state to state. Some states do not limit the duration of an implied warranty, so the above limitations may not apply to you. Also, some states do not allow the exclusion or limitation of incidental or consequential damages so the above limitations or exclusions may not apply to you. Intelligent Designs 2000 reserves the right to discontinue product lines and substitute products or provide other remedies other than those listed in the limited warranty for those discontinued products.

THIS WARRANTY IS IN LIEU OF ANY OTHER WARRANTIES, EXPRESS OR IMPLIED, INCLUDING WITHOUT LIMITATION, ANY WARRANTY OF MERCHANTABILITY OR FITNESS FOR A PARTICULAR PURPOSE. TO THE EXTENT ANY IMPLIED WARRANTY IS REQUIRED BY LAW, IT IS LIMITED IN DURATION TO THE EXPRESS WARRANTY PERIOD ABOVE. INTELLIGENT DESIGNS 2000 CORPORATION/ GOLD RACKS USA WILL NOT BE LIABLE FOR ANY CONSEQUENTIAL, INDIRECT, OR INCIDENTAL DAMAGES OF ANY KIND INCLUDING LOSS OF REVENUES OR PROFITS, IN CONNECTION WITH THE PRODUCT(S). SOME STATES DO NOT ALLOW LIMITATIONS ON HOW LONG AN IMPLIED WARRANTY LASTS OR THE EXCLUSION OF INCIDENTAL OR CONSEQUENTIAL DAMAGES, SO THE ABOVE LIMITATIONS OR EXCLUSIONS MAY NOT APPLY TO YOU.

REQUESTING WARRANTY COVERAGE

For this warranty to be effective, it is strongly recommended that the purchaser completes and returns the warranty registration to Intelligent Designs 2000 within ten days of the date of purchase. Replacement parts can be obtained by returning the part along with proof of purchase. Warranty claims cannot be determined until the merchandise is received and inspected. **Returns made to Intelligent Designs 2000 will not be accepted without prior authorization from Intelligent Designs 2000.** This included but is not limited to all shipping costs and all other incidental costs to be paid by the customer. Please call the customer service department at the number below.

LIMITED LIABILITY WARRANTY

Intelligent Designs 2000 Corporation warrants this product to be free of original defects in materials or workmanship as long as the original purchaser owns the motor vehicle on which it is installed. This warranty does not cover damage resulting from accident, misuse or abuse, neglect, lack of reasonable care, or improper installation. The Company will repair or replace, at its option, any product covered by this warranty that becomes defective. This is a parts-only warranty and such repair or replacement shall be the Company's sole obligation and the customer's sole remedy for a defective product. The Company shall have no liability for personal injury, property damage, incidental, or consequential damages of any kind or nature. **THIS FOREGOING WARRANTIES ARE EXCLUSIVE AND IN LIEU OF ALL OTHER WARRANTIES, EXPRESS OR IMPLIED, AND THE COMPANY DISCLAIMS ALL OTHER WARRANTIES, EXPRESS OR IMPLIED, INCLUDING, WITHOUT LIMITATION, ANY IMPLIED WARRANTY OF MERCHANTABILITY OR FITNESS FOR A PARTICULAR PURPOSE.**

To obtain warranty service, return this portion to Intelligent Designs 2000 Corporation with a proof of purchase to the address below. Please include:

First Name _____	Last Name _____
Address _____	City _____
E-mail _____	State _____
Phone Number _____	Zip Code _____