

GOBI SUBARU FORESTER GEN 4 REAR DOOR LADDER INSTALLATION INSTRUCTIONS

The Gobi ladder must be inspected before each use to make certain attachments are secure, and for evidence of Wear. Misuse of the ladder or failure to observe the manufacturer's instructions as to installation, proper Attachment and maintenance will void any warranties that may be implied by law.

CAUTION

"LADDER IS TO BE TRAVERSED UPON
ONLY

WHEN THE REAR DOOR TAIL GATE
AND LIFT GATE ARE FULLY
CLOSED AND LOCKED"

CAUTION: USE ANTI-SEIZE LUBRICANT ON ALL SCREWS

GOBI SUBARU FORESTER GEN 4 REAR DOOR LADDER INSTALLATION INSTRUCTIONS

Guidelines:

When using Load Carriers and Accessories, the user must understand the precautions. The points listed below will assist you in using the rack /carrier system and will encourage safety.

- For quality fits and safty, use only the recommended rack or accessory. Do not assume an accessory will fit, always check with dealer when obtaining new accessories. Use only approved accessories on load carriers. Using other brands will void your warrenty.
- Make sure all knobs, bolts, screws, straps, and locks are firmly attached, tightened and locked before every trip. Knobs, bolts, screws, straps, and locks must be periodically inspected for signs of wear, corrosion, and fatigue. Check your load at stops during the trip to insure continued fastening security.
- Check local and state laws governing projection of objects beyound the width of a vehicle. **Be aware of the width and height of your cargo since low clearance branches, bridges, and parking garages can affect the load** All cargo will affect the vehicle's driving behavior. Never drive with any lock, know, or rack in an open or unlocked position. All long loads such as, but not limited to sailboards, surfboards, kayaks, canoes, and lumber must be tied down front and rear to the bumpers or tow hooks, of the vehicle.
- Remove your rack accessories when they are not in use, before intering car washes, prior to taking in your vehicle for service, and whenever clearance may be an issue.
- All locks must be turned and moved periodically to insure smooth operation. Use graphite or similar dry lubricant to help this. Locks are designed to deter vandalism and theft. Remove valuable gear if your vehicle is unattended for an extended period. Place at least one key in the glove compartment.
- For safety to your vehicle and rack system, obey all posted speed limits and traffic cautions. Adapt your speed to the conditions of the road and the load being carried.
- Do not use load carriers and accessories for purposes other than those for which they were designed. Do not exceed their carrying capacity.
- Consult with your dealer if you have any questions regarding the operations and limits of this product. Review all instructions carefully.

• **READ ALL INSTRUCTIONS CAREFULLY BEFORE STARTING** •

CAUTION: USE ANTI-SEIZE LUBRICANT ON ALL SCREWS

Letter	Description	Location	Quantity									
A	GOBI SUBARU FORESTER 4th GEN REAR DOOR LADDER	Main box	1									
B	CLAMP & PINCH PLATE	strapped to ladder	1									
C	LADDER HANGER PLATE	strapped to ladder	1									
D	LADDER STAND OFF PLATE	BAG #1	1									
E	<p>GOBI LADDER MOUNTING HARDWARE</p> <p>CONTENTS: 2- 5/16" Stainless nuts 2- 5/16" Stainless lock washers 2- 3/8" Stainless Flat washers 1- 3/16 Allen wrench 1- 1/8" Allen wrench 1- Pack anti-seize lubricant</p> <table border="0"> <tr> <td>2- 5/16 x 1" Button head screw SS</td> <td rowspan="3">} Pre-assembled to bottom of ladder</td> </tr> <tr> <td>2- 5/16" Flat washer SS</td> </tr> <tr> <td>2- 5/16" Lock washer SS</td> </tr> <tr> <td>2- 10-32 x 1" Pan head screw SS</td> <td rowspan="4">} Attached to plate D</td> </tr> <tr> <td>4- 10-32 Fender washer SS</td> </tr> <tr> <td>2- 10-32 Nylock nut SS</td> </tr> <tr> <td>6- 1/4" Black nylon flat washer</td> </tr> </table>	2- 5/16 x 1" Button head screw SS	} Pre-assembled to bottom of ladder	2- 5/16" Flat washer SS	2- 5/16" Lock washer SS	2- 10-32 x 1" Pan head screw SS	} Attached to plate D	4- 10-32 Fender washer SS	2- 10-32 Nylock nut SS	6- 1/4" Black nylon flat washer	BAG #1	1
2- 5/16 x 1" Button head screw SS	} Pre-assembled to bottom of ladder											
2- 5/16" Flat washer SS												
2- 5/16" Lock washer SS												
2- 10-32 x 1" Pan head screw SS	} Attached to plate D											
4- 10-32 Fender washer SS												
2- 10-32 Nylock nut SS												
6- 1/4" Black nylon flat washer												

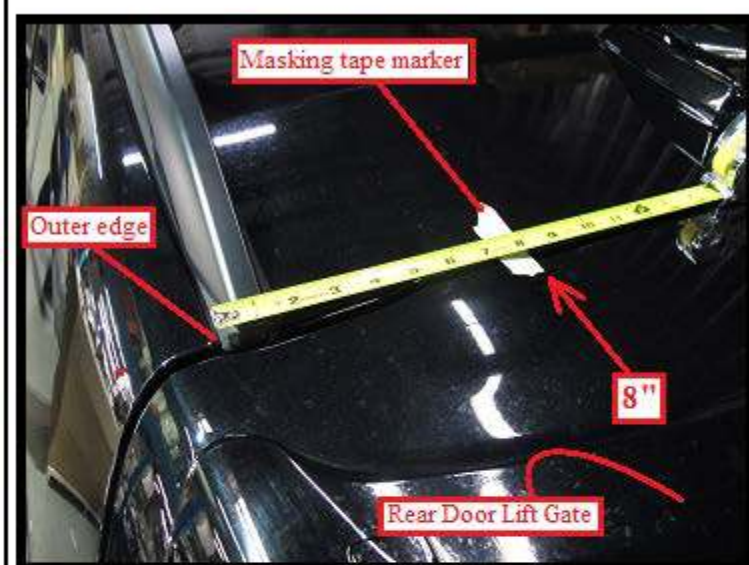


CAUTION: USE ANTI-SEIZE LUBRICANT ON ALL SCREWS

GOBI SUBARU FORESTER GEN 4 REAR DOOR LADDER INSTALLATION INSTRUCTIONS

Fig. 1

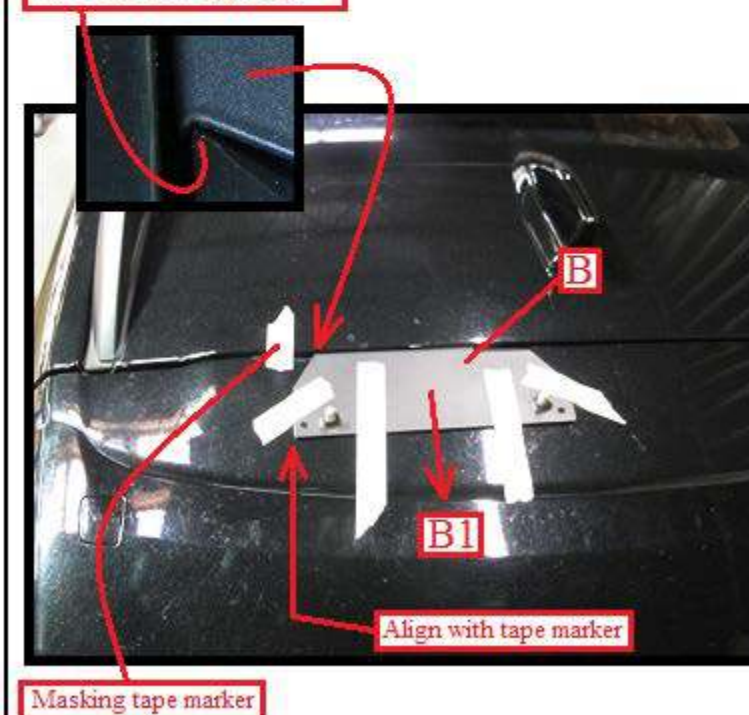
Use a tape measure and mark with masking tape 8" from the outer edge of the vehicle's top rear driver side corner just above the rear door lift gate as shown.



Hanger plate in full contact
with rear door upper lip

Fig. 2

Install ladder hanger plate (B) with the left side of the plate in line with the masking tape marker as shown. Pull back with force on the hanger plate in the direction of arrow (B1), so that hook end of the hanger plate makes full contact with the rear door upper lip. Hold in place temporarily with masking tape as shown.



GOBI SUBARU FORESTER GEN 4 REAR DOOR LADDER INSTALLATION INSTRUCTIONS



Fig. 3

Place ladder onto hanger plate as shown and allow to hang down.



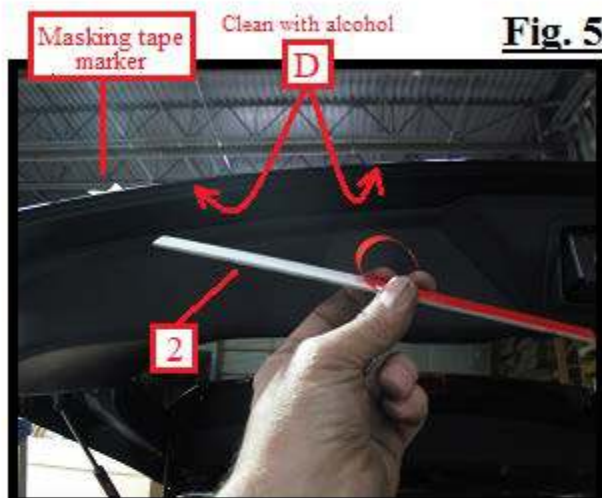
Fig. 4

Make certain the ladder is hanging vertically true then place a masking tape marker to the lower left side of the ladder as shown.



Masking tape marker

GOBI SUBARU FORESTER GEN 4 REAR DOOR LADDER INSTALLATION INSTRUCTIONS

**Fig. 5****Fig. 6**

Carefully remove ladder from the rear door, then lift up rear door lift gate as shown in Fig. 5 and Fig. 6. Clean area (D) directly where pinch plate (2) will be located and also on the outside of the door where the ladder will be located with denatured alcohol shown in Fig. 5 and Fig. 6. Remove pinch plate (2) located in clamp (B) shown on page 3 of your hardware kit. Peel off the red protective film on the double back tape and install pinch plate (2) as shown in Fig. 6.

**Fig. 7**

Hanger plate in full contact
with rear door upper lip

**Fig. 8**

Remove hanger plate and clean the area where the hanger plate was seated with denatured alcohol, shown in Fig. 7. Peel off the double back tape protective film from under the hanger plate and install in line with the masking tape marker as before, shown in Fig. 7 and Fig. 8. Make certain to pull back on the hanger plate in the direction of (B1) with force during the install to make certain that the hook end of the hanger plate makes full contact with the upper door lip as shown in the exploded view of Fig. 8.

GOBI SUBARU FORESTER GEN 4 REAR DOOR LADDER INSTALLATION INSTRUCTIONS



Remove the two 5/16-18 x 1" button head screws and washers from under the ladder and place near by as they will be needed shortly. Peel off the red double back protective film from the bottom of the ladder as shown and install the ladder back on to the hanger plate and pull down firmly until the bottom of the ladder aligns with the masking tape marker and the bottom rear door lip, hold in place for 30 seconds.

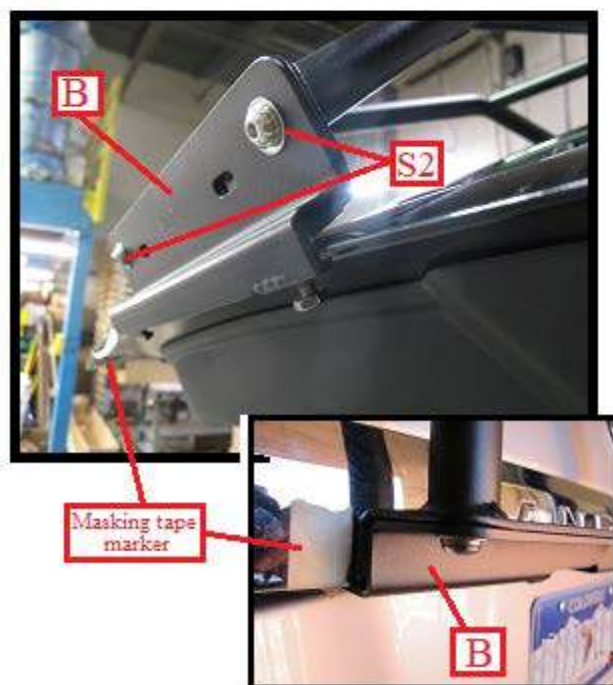


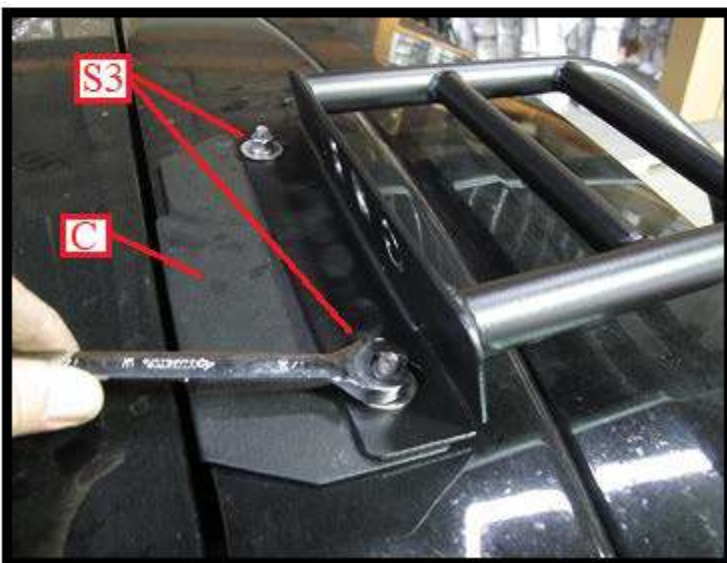
Fig. 11

Remove clamp (B) from your hardware kit. While maintaining downward pressure on ladder to keep the ladder aligned with the rear door lower lip and masking tape marker. Install clamp (B) as shown using the two 5/16-18 x 1" button head screws and washers (S2) previously removed. Fully tighten down both button head screws using the short 3/16" Allen wrench located in Bag #1 of your hardware kit. As shown in Fig. 11a, when fully tightened ladder should be even or close to even with the lower door lip.

GOBI SUBARU FORESTER GEN 4 REAR DOOR LADDER INSTALLATION INSTRUCTIONS

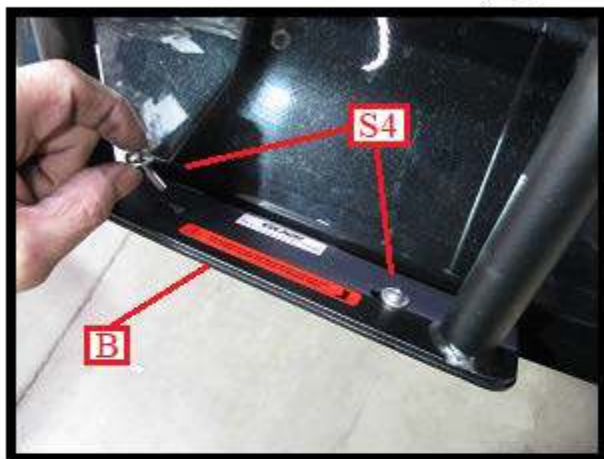
Fig. 12**Fig. 12a****Fig. 13**

Use the short 1/8" Allen wrench located in Bag #1 of your hardware kit. Tighten both screws (S1) so that the head of the set screw is above the jam nut approximately 1/16" as shown in Fig. 12 and Fig. 12a. Hand tighten jam nut using a 7/16" open end wrench with approximately 5 to 7 lbs. of torque as shown in Fig. 13.

Fig. 14

Install two 3/8" flat washers, two 5/16" lock washers and nuts (S3) located in Bag #1 of your hardware kit. Thread onto the two threaded studs of hanger plate (C), shown in Fig. 14. Tighten down with approximately 5 to 7 lbs. of hand torque. Do not over tighten.

GOBI SUBARU FORESTER GEN 4 REAR DOOR LADDER INSTALLATION INSTRUCTIONS

Fig. 15**Fig. 16**

Insert one 10-32 x 1" pan head screw and one 10-32 flat washer (S4) located in Bag #1 of your hardware kit, into each slotted hole of ladder base plate (B) as shown in Fig. 15 and Fig. 16.

Fig. 17**Fig. 18**

Place a small amount of anti-seize lubricant onto the ends of each 10-32 screw. As shown in Fig. 17 insert three black nylon flat washers (N1) (located in Bag #1 of your hardware kit), between the bottom of clamp (B) and standoff (B1). Finally add one 10-32 flat washer and one 10-32 nylock nut (S4) to the bottom of each screw. Center standoff (B1) between button head screws (S2) and hand tighten with approximately 5 lbs. hand torque. Make certain standoff (B1) does not slide against bumper when closing the rear lift gate. If standoff (B1) should contact bumper, remove one black nylon washer (N1) per side and retighten and check again. Fig. 18 shows the standoff (B1) very close but does not contact bumper when closing.

GOBI SUBARU FORESTER GEN 4 REAR DOOR LADDER INSTALLATION INSTRUCTIONS



Remove all masking tape markers
Installation complete