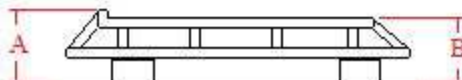


GOBI FORD F-150 CREW CAB STEALTH ROOF RACK

SPECIFICATIONS

SPECIFICATION:

PRODUCT TYPE	Ford F-150 Crew Cab Truck roof rack with sun roof opening
WEIGHT	65 lbs. (29.48 kg.)
LENGTH	61" (1.55M)
WIDTH	51" (1.30M)
HEIGHT (STEALTH) (RANGER)	5" (12.7cm) front riser down to 3" (7.62cm) roof rack perimeter tube 6.5" (16.5cm) front riser down to 4.75" (12.07cm) roof rack perimeter tube
PAINT	Black textured semi gloss powder coat with Gray epoxy anti-rust undercoat
USABLE CARGO SPACE (with sun roof opening)	11.98 sq. ft. (1.10M2)
USABLE CARGO SPACE (no sun roof opening)	12.24 sq. ft. (1.14M2)
LOAD LIMIT	300 lbs. (138.08kg)
CARGO DECK	3/4" 9 gage expanded metal welded at all points
FRAME	16 gage 1.0" (.025mm) welded tublar frame
VEHICLE ATTACHMENT	4- 3/16" (4.72mm) formed clamp brackets black powder coated with a Gray epoxy anti-rust under coat. Clamp type roof top attachment
FRONT LIGHT BAR	4 Place light bar can be used with up to 8" diameter off road lights
REAR LIGHT BAR	2- independent rear light bar tabs
WIND DEFLECTOR	48" (121.92cm) Black powder coated aluminum wind deflector with 3 mounting brackets attaches to front light bar
HARDWARE	Stainless Steel

ROOF RACK HEIGHT
FROM VEHICLE ROOF TOP
GUTTERStealth: A= 8-1/2"
B= 6-3/4"Ranger: A= 10-1/4"
B= 8-1/2"