

GOBI LAND ROVER LR-3 & LR-4 REAR DOOR LADDER INSTALLATION INSTRUCTIONS

The Gobi ladder must be inspected before each use to make certain attachments are secure, and for evidence of Wear. Misuse of the ladder or failure to observe the manufacturer's instructions as to installation, proper Attachment and maintenance will void any warranties that may be implied by law.

CAUTION

"LADDER IS TO BE TRAVERSED UPON
ONLY

WHEN THE REAR DOOR TAIL GATE
AND LIFT GATE ARE FULLY
CLOSED AND LOCKED"

CAUTION: USE ANTI-SEIZE LUBRICANT ON ALL SCREWS

GOBI LAND ROVER LR-3 & LR-4 REAR DOOR LADDER INSTALLATION INSTRUCTIONS

Guidelines:

When using Load Carriers and Accessories, the user must understand the precautions. The points listed below will assist you in using the rack /carrier system and will encourage safety.

- For quality fits and safety, use only the recommended rack or accessory. Do not assume an accessory will fit, always check with dealer when obtaining new accessories. Use only approved accessories on load carriers. Using other brands will void your warranty.
- Make sure all knobs, bolts, screws, straps, and locks are firmly attached, tightened and locked before every trip. Knobs, bolts, screws, straps, and locks must be periodically inspected for signs of wear, corrosion, and fatigue. Check your load at stops during the trip to insure continued fastening security.
- Check local and state laws governing projection of objects beyond the width of a vehicle. **Be aware of the width and height of your cargo since low clearance branches, bridges, and parking garages can affect the load** All cargo will affect the vehicle's driving behavior. Never drive with any lock, knob, or rack in an open or unlocked position. All long loads such as, but not limited to sailboards, surfboards, kayaks, canoes, and lumber must be tied down front and rear to the bumpers or tow hooks, of the vehicle.
- Remove your rack accessories when they are not in use, before entering car washes, prior to taking in your vehicle for service, and whenever clearance may be an issue.
- All locks must be turned and moved periodically to insure smooth operation. Use graphite or similar dry lubricant to help this. Locks are designed to deter vandalism and theft. Remove valuable gear if your vehicle is unattended for an extended period. Place at least one key in the glove compartment.
- For safety to your vehicle and rack system, obey all posted speed limits and traffic cautions. Adapt your speed to the conditions of the road and the load being carried.
- Do not use load carriers and accessories for purposes other than those for which they were designed. Do not exceed their carrying capacity.
- Consult with your dealer if you have any questions regarding the operations and limits of this product. Review all instructions carefully.

CAUTION: USE ANTI-SEIZE LUBRICANT ON ALL SCREWS

GOBI LAND ROVER LR-3 & LR-4 REAR DOOR LADDER

INSTALLATION INSTRUCTIONS

Included in kit

Letter	Description	Location	Quantity
A	GOBI LAND ROVER LR-3 & LR-4 REAR LADDER	Main box	1
B	LOWER LADDER MOUNTING PLATE	strapped to ladder	1
C	LADDER HANGER PLATE	strapped to ladder	1
D	<p style="text-align: center;">GOBI LADDER MOUNTING HARDWARE</p> <p>CONTENTS:</p> <ul style="list-style-type: none"> 2- 5/16" Nuts SS 2- 5/16" Lock washers SS 2- 5/16" Cupped washers SS 2- 6 x 20mm Button head screw SS 2- 1/4" Lock washer SS 2- 1/4" Flat washer SS 1- 4mm Allen wrench 1- 3/16" Allen wrench 2- 5/16-18 x 1" Button head screw SS 2- 5/16" Lock washer SS 2- 5/16" Flat washer <div style="display: flex; justify-content: space-between; margin-top: 10px;"> <div style="width: 45%;"> <p>(K) Hanger plate ladder mount hardware</p> <p>(L) ladder base to rear door mounting hardware</p> <p>(M) Attached to bottom of ladder</p> </div> <div style="width: 45%; border-left: 1px solid black; padding-left: 5px;"> <p>1</p> </div> </div>	BAG #1	1

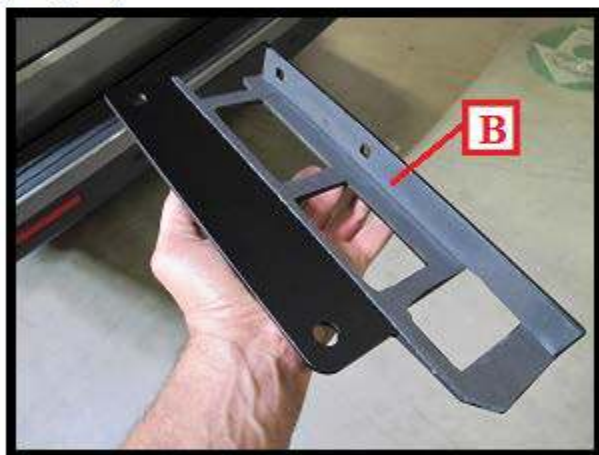


CAUTION: USE ANTI-SEIZE LUBRICANT ON ALL SCREWS

GOBI LAND ROVER LR-3 & LR-4 REAR DOOR LADDER INSTALLATION INSTRUCTIONS

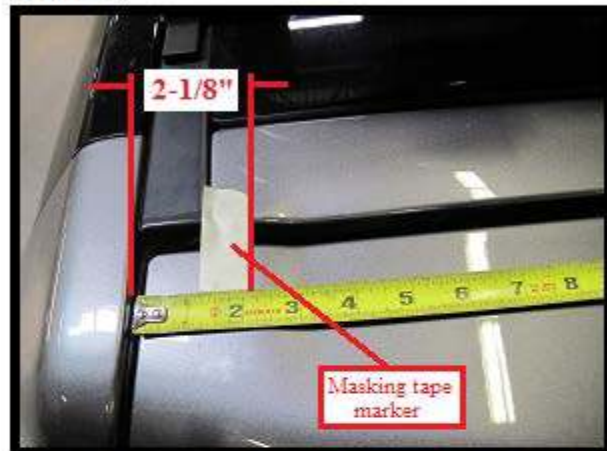
Fig. 1**Fig. 2**

Raise the rear door of your vehicle and locate two Torx head screws (S) directly under the rear door lift handle as shown in Fig.1. Use a Torx 30 drive and remove both screws as shown in Fig. 2.

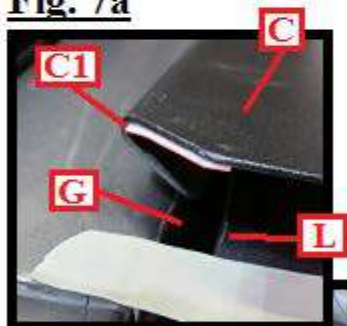
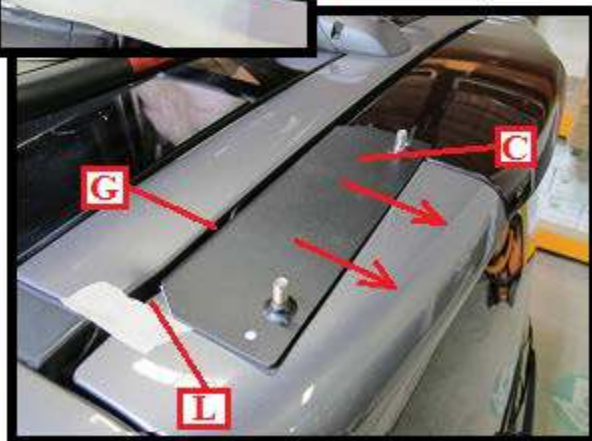
Fig. 3**Fig. 4**

Remove the lower ladder plate (B) as shown in Fig. 3 from your hardware kit and attach onto lower rear door as shown in Fig. 4. Use two 6x20mm button head screws, 1/4" lock washers and flat washers (L) from Bag #L of your hardware kit and thread through support plate (B) then into holes (S1) of the rear door as shown in Fig. 2 and 4. Push lower plate (B) tight against lower door and fully tighten down with the 4mm Allen wrench also located in Bag #L. Close rear door at this time.

GOBI LAND ROVER LR-3 & LR-4 REAR DOOR LADDER INSTALLATION INSTRUCTIONS

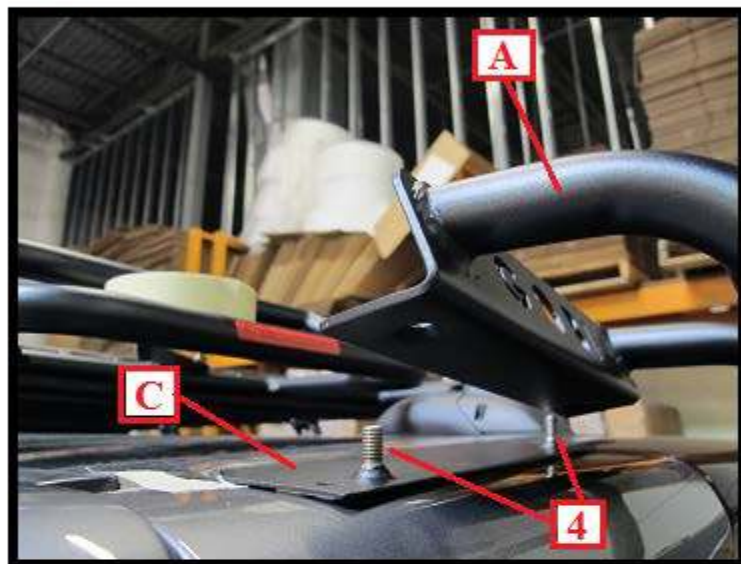
Fig. 5**Fig. 6**

Clean the entire top surface area shown in Fig. 5 with denatured alcohol. As shown in Fig. 6 place a masking tape marker 2-1/8" away from the inner edge of upper body trim.

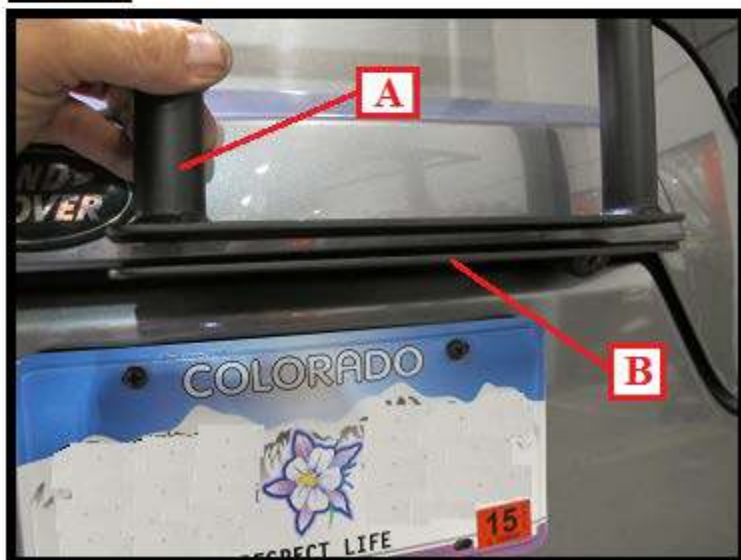
Fig. 8**Fig. 7a****Fig. 7**

Slip ladder hanger plate (C) as shown in Fig. 7a and Fig. 7 into gap (G) between lift gate and vehicle body. **(DO NOT REMOVE THE RED PROTECTIVE TAPE COVER AT THIS TIME)**. Pull hanger plate (C) tight against the rear door upper lip (L) in the direction of the red arrows shown in Fig. 7. Once you understand how hanger plate (C) fits onto the rear door remove the hanger plate then remove the protective red cover and remount hanger plate (C). Make certain that edge (C1) of hanger plate (C) as shown in Fig. 7a is in full contact with the rear door lip (L) and pull back as before then press hanger plate down firmly.

GOBI LAND ROVER LR-3 & LR-4 REAR DOOR LADDER INSTALLATION INSTRUCTIONS

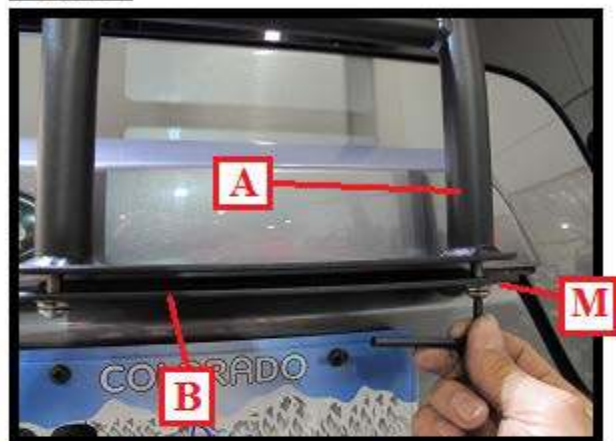
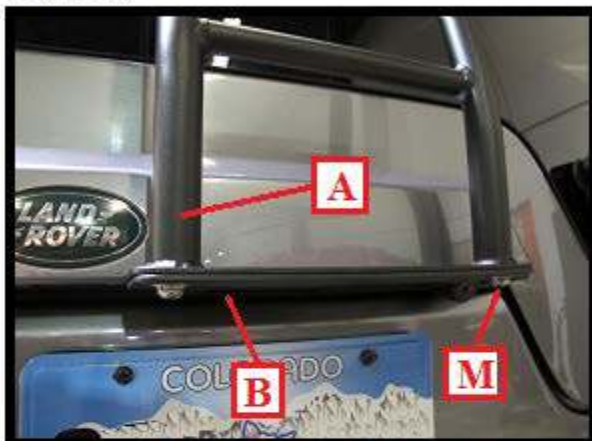
Fig. 9

Unscrew from the bottom of ladder (A) two 5/16-18 x 1" button head screws, lock washers and flat washers (M) using a 3/16" Allen wrench located in Bag #L of your hardware kit as shown in Fig. 11.

Fig. 10

Set the top two holes of ladder (A) over threaded studs (4) of hanger plate (C) as shown in Fig. 9. Place the bottom of ladder (A) above the lower ladder mount plate (B) as shown in Fig. 10.

GOBI LAND ROVER LR-3 & LR-4 REAR DOOR LADDER INSTALLATION INSTRUCTIONS

Fig. 11**Fig. 12**

Thread both screws (M) previously removed from the bottom of ladder (A) back up through lower ladder support plate (B) and up into bottom of ladder (A) using the 3/16" Allen wrench as shown in Fig. 11. Pull ladder down and away from the rear door while you are threading screws (M) in place and fully tighten down as shown in Fig. 12.

Fig. 13**Fig. 14**

Remove two each of 5/16" nylock nuts, lock washers and cup shaped washers (K) from Bag #K of your hardware kit. Thread one each on both threaded studs (4) of hanger plate (C) as shown in Fig. 13. First push on a cupped shaped washer, lock washer and thread on a nylock nut. Tighten down firmly but do not over tighten. You can now lift the tail gate up as shown in Fig. 14.

GOBI LAND ROVER LR-3 & LR-4 REAR DOOR LADDER INSTALLATION INSTRUCTIONS



GOBI LAND ROVER LR-3 & LR-4 REAR DOOR LADDER INSTALLATION COMPLETED