

GOBI JEEP JK STEALTH STANDARD WIND DEFLECTOR INSTALLATION INSTRUCTIONS

Guidelines

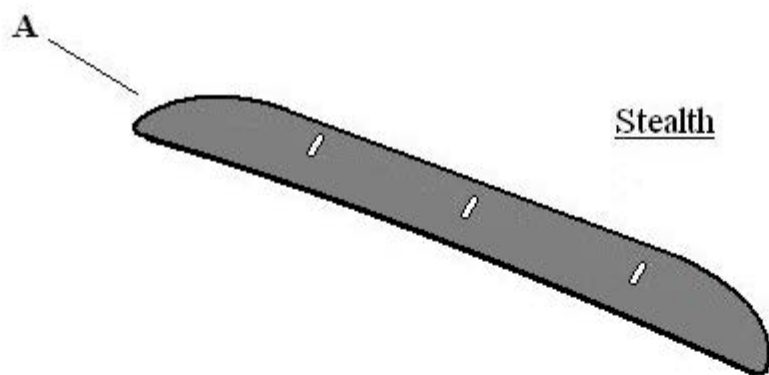
When using Load Carriers and Accessories, the user must understand the precautions. The points listed below will assist you in using the rack /carrier system and will encourage safety.

- For quality fits and safty, use only the recommended rack or accessory. Do not assume an accessory will fit, always check with dealer when obtaining new accessories. Use only approved accessories on load carriers. Using other brands will void your warrenty.
- Make sure all knobs, bolts, screws, straps, and locks are firmly attached, tightened and locked before every trip. Knobs, bolts, screws, straps, and locks must be periodically inspected for signs of wear, corrosion, and fatigue. Check your load at stops during the trip to insure continued fastening security.
- Check local and state laws governing projection of objects beyound the width of a vehicle. **Be aware of the width and height of your cargo since low clearance branches, bridges, and parking garages can affect the load** All cargo will affect the vehicle's driving behavior. Never drive with any lock, know, or rack in an open or unlocked position. All long loads such as, but not limited to sailboards, surfboards, kayaks, canoes, and lumber must be tied down front and rear to the bumpers or tow hooks, of the vehicle.
- Remove your rack accessories when they are not in use, before intering car washes, prior to taking in your vehicle for service, and whenever clearance may be an issue.
- All locks must be turned and moved periodically to insure smooth operation. Use graphite or similar dry lubricant to help this. Locks are designed to deter vandalism and theft. Remove valuable gear if your vehicle is unattended for an extended period. Place at least one key in the glove compartment.
- For safety to your vehicle and rack system, obey all posted speed limits and traffic cautions. Adapt your speed to the conditions of the road and the load being carried.
- Do not use load carriers and accessories for purposes other than those for which they were designed. Do not exceed their carrying capacity.
- Consult with your dealer if you have any questions regarding the operations and limits of this product. Review all instructions carefully.

GOBI JEEP JK STEALTH STANDARD WIND DEFLECTOR INSTALLATION INSTRUCTIONS

Included in kit

Letter	Description	Location	Quantity
A	GOBI JEEP JK STEALTH STANDARD WIND DEFLECTOR	Main box	1
B	WIND DEFLECTOR MOUNTING HARDWARE CONTENTS: 3- Black support brackets 6- 1/4-20 x 3/4" Button head screws 12- 1/4" Black nylon washers 6- 1/4" Nylock nuts	Bag #1	1



Stealth



Bag #1

NOTE:

Should you decide to use a soft top contact your nearest Gobi dealer or Gobi direct to order additional parts and instructions for soft top wind deflector installation

GOBI JEEP JK STEALTH STANDARD WIND DEFLECTOR INSTALLATION INSTRUCTIONS

CAUTION: USE ANTI-SEIZE LUBRICANT ON ALL SCREWS

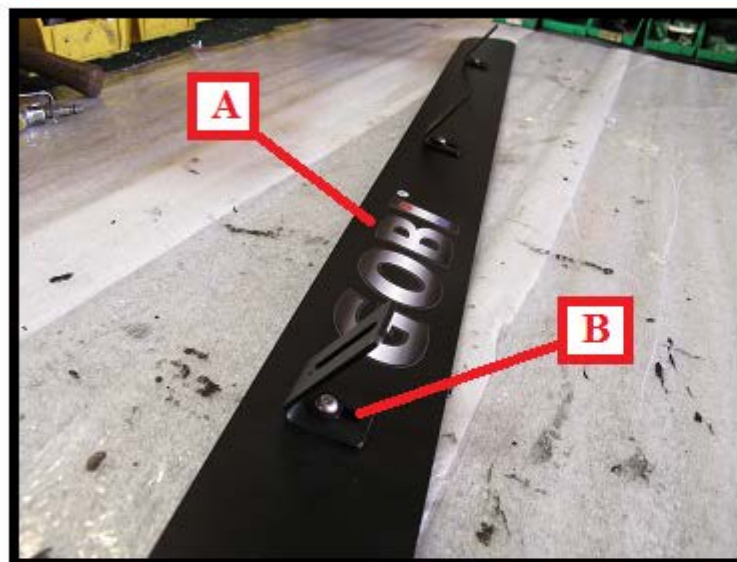


Fig. 1

After removing the Gobi Stealth wind deflector (A) strapped onto your roof rack. Face the Gobi logo upwards onto a table as shown in Fig. 1. Remove from hardware Bag #1 also tied to the wind deflector 3 black "L" brackets (B) and place the short end of the "L" bracket to contact the wind deflector as shown in Fig. 1 and Fig. 2.

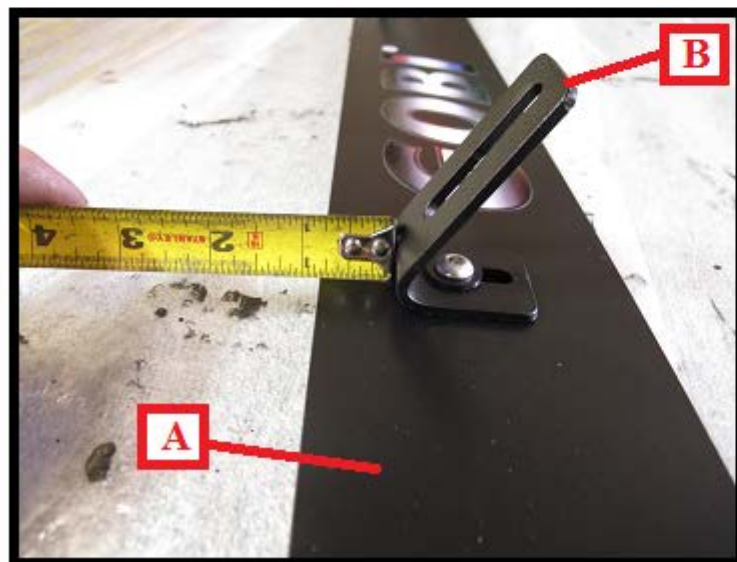
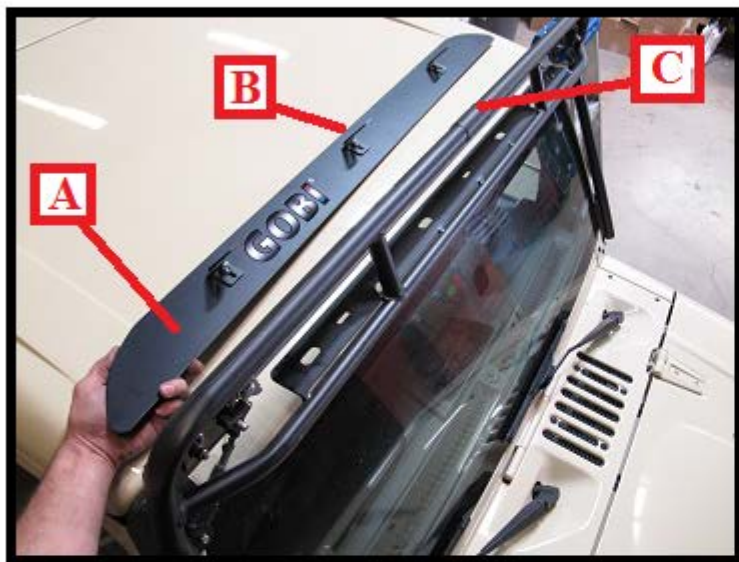


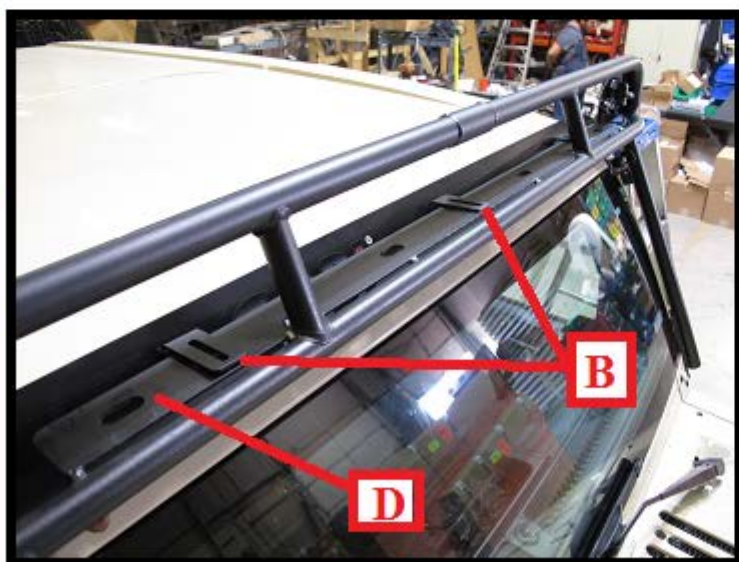
Fig. 2

Set each wind deflector support bracket (B) $3/4$ " from the top of the wind deflector (A) as shown in Fig. 2. Remove from Bag #1 three $1/4$ -20 x $3/4$ " button head screws, six $1/4$ " black nylon washers and three $1/4$ " Nylock nuts and secure each support bracket as shown in Fig. 2 using a $5/32$ " Allen wrench and a $7/16$ " open or closed end wrench.

GOBI JEEP JK STEALTH STANDARD WIND DEFLECTOR INSTALLATION INSTRUCTIONS

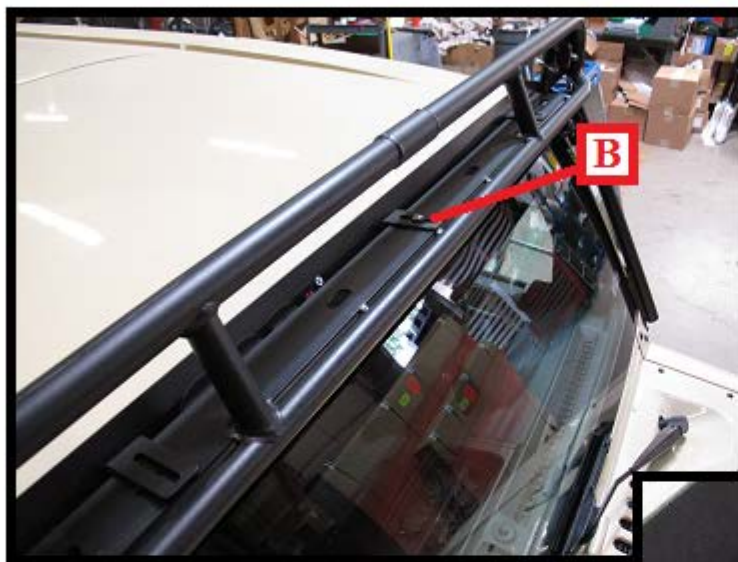
**Fig. 3**

Place the wind deflector (A) as shown in Fig. 3 behind the Gobi light bar (C) with support brackets (B) facing upwards and the top of the wind deflector directed rear of the the vehicle.

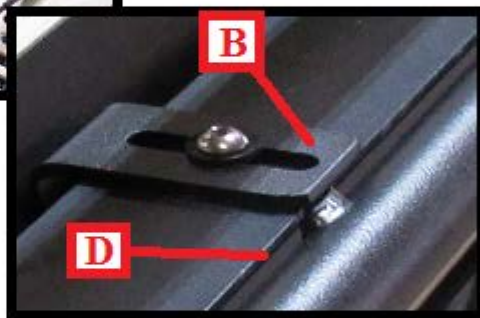
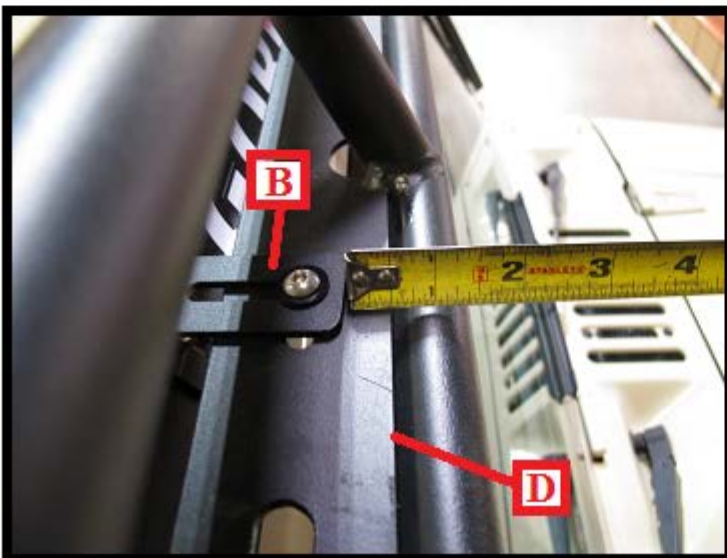
**Fig. 4**

Slide wind deflector support brackets (B) as shown in Fig. 4 up onto the Gobi light bar mounting plate (D) and center the middle wind deflector bracket (B) to the smaller center slot on the Gobi light bar mounting plate (D) and hold in place.

GOBI JEEP JK STEALTH STANDARD WIND DEFLECTOR INSTALLATION INSTRUCTIONS

**Fig. 5**

Remove from Bag #1 three 1/4-20 x 3/4" button head screws, six 1/4" black nylon washers and three 1/4" nylock nuts. Set the center support bracket (B) so that its leading edge is even with the forward facing edge of the Gobi light bar mounting plate (D) as shown in Fig. 5 and Fig. 5a. Secure in place only the center support bracket (B) at this time using the supplied hardware.

**Fig. 5a****Fig. 6**

Set the outer two support brackets (B) 1/2" back from the forward facing edge of light bar mounting plate (D) as shown in Fig. 6 and secure in place with supplied hardware. Your wind deflector is now set to handle high speed wind deflection.

GOBI JEEP JK STEALTH STANDARD WIND DEFLECTOR INSTALLATION INSTRUCTIONS



GOBI JEEP JK STEALTH STANDARD WIND DEFLECTOR INSTALLATION COMPLETED