

GOBI NISSAN 05-2015 XTERRA LADDER INSTALLATION INSTRUCTIONS

The Gobi ladder must be inspected before each use to make certain attachments are secure, and for evidence of Wear. Misuse of the ladder or failure to observe the manufacturer's instructions as to installation, proper Attachment and maintenance will void any warranties that may be implied by law.

CAUTION

"LADDER IS TO BE TRAVERSED UPON
ONLY
WHEN THE REAR DOOR IS FULLY
CLOSED AND LOCKED"

**INSTRUCTIONS APPLY TO BOTH PASSENGER
AND DRIVERS SIDE LADDERS**

GOBI NISSAN 05-2015 XTERRA LADDER INSTALLATION INSTRUCTIONS

Guidelines:

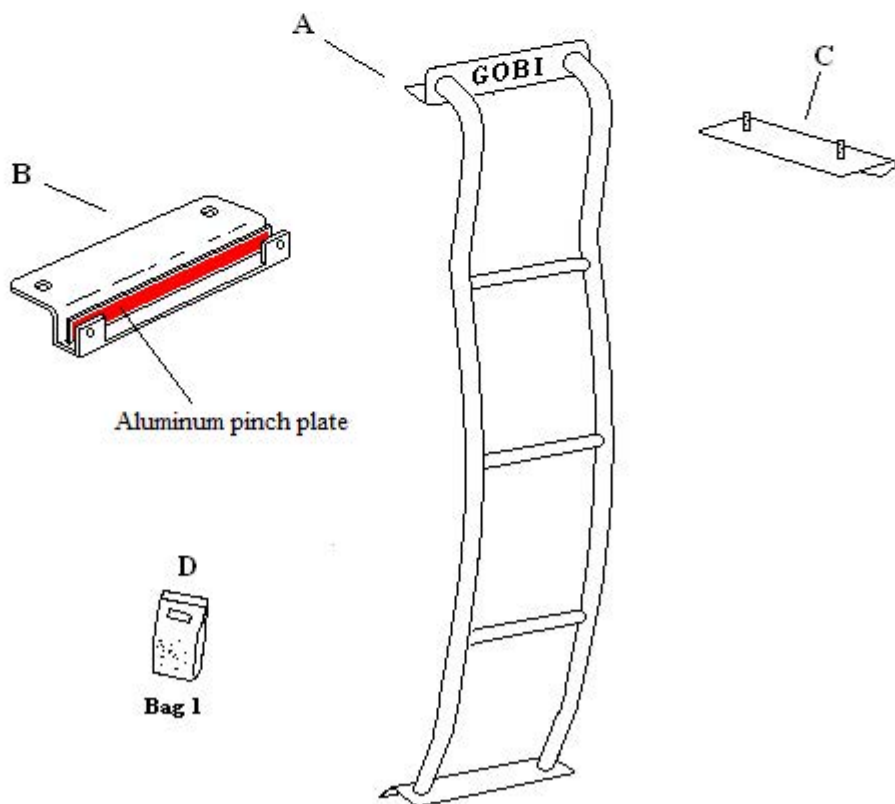
When using Load Carriers and Accessories, the user must understand the precautions. The points listed below will assist you in using the rack /carrier system and will encourage safety.

- For quality fits and safty, use only the recommended rack or accessory. Do not assume an accessory will fit, always check with dealer when obtaining new accessories. Use only approved accessories on load carriers. Using other brands will void your warrenty.
- Make sure all knobs, bolts, screws, straps, and locks are firmly attached, tightened and locked before every trip. Knobs, bolts, screws, straps, and locks must be periodically inspected for signs of wear, corrosion, and fatigue. Check your load at stops during the trip to insure continued fastening security.
- Check local and state laws governing projection of objects beyound the width of a vehicle. **Be aware of the width and height of your cargo since low clearance branches, bridges, and parking garages can affect the load** All cargo will affect the vehicle's driving behavior. Never drive with any lock, know, or rack in an open or unlocked position. All long loads such as, but not limited to sailboards, surfboards, kayaks, canoes, and lumber must be tied down front and rear to the bumpers or tow hooks, of the vehicle.
- Remove your rack accessories when they are not in use, before intering car washes, prior to taking in your vehicle for service, and whenever clearance may be an issue.
- All locks must be turned and moved periodically to insure smooth operation. Use graphite or similar dry lubricant to help this. Locks are designed to deter vandalism and theft. Remove valuable gear if your vehicle is unattended for an extended period. Place at least one key in the glove compartment.
- For safety to your vehicle and rack system, obey all posted speed limits and traffic cautions. Adapt your speed to the conditions of the road and the load being carried.
- Do not use load carriers and accessories for purposes other than those for which they were designed. Do not exceed their carrying capacity.
- Consult with your dealer if you have any questions regarding the operations and limits of this product. Review all instructions carefully.

GOBI NISSAN 05-2015 XTERRA LADDER INSTALLATION INSTRUCTIONS

Included in kit

Letter	Description	Location	Quantity
A	GOBI NISSAN XTERRA 05-2015 LADDER	Main box	1
B	LOWER LADDER CLAMP	strapped to ladder	1
C	LADDER HANGER PLATE (same plate right & left)	strapped to ladder	1
D	GOBI XTERRA LADDER HARDWARE CONTENTS: 2- 5/16" x 18 Stainless Nut 2- 5/16 Stainless lock washer 2- 5/16 Stainless flat washer 2- 10-32 x 1/2" Socket Cap screw SS 1- 5/32" Allen wrench 1- 3/16" Allen wrench 1- 1/8" Allen wrench	BAG #1	1



GOBI NISSAN 05-2015 XTERRA LADDER INSTALLATION INSTRUCTIONS

Note: Use the directions for right and left ladder installs

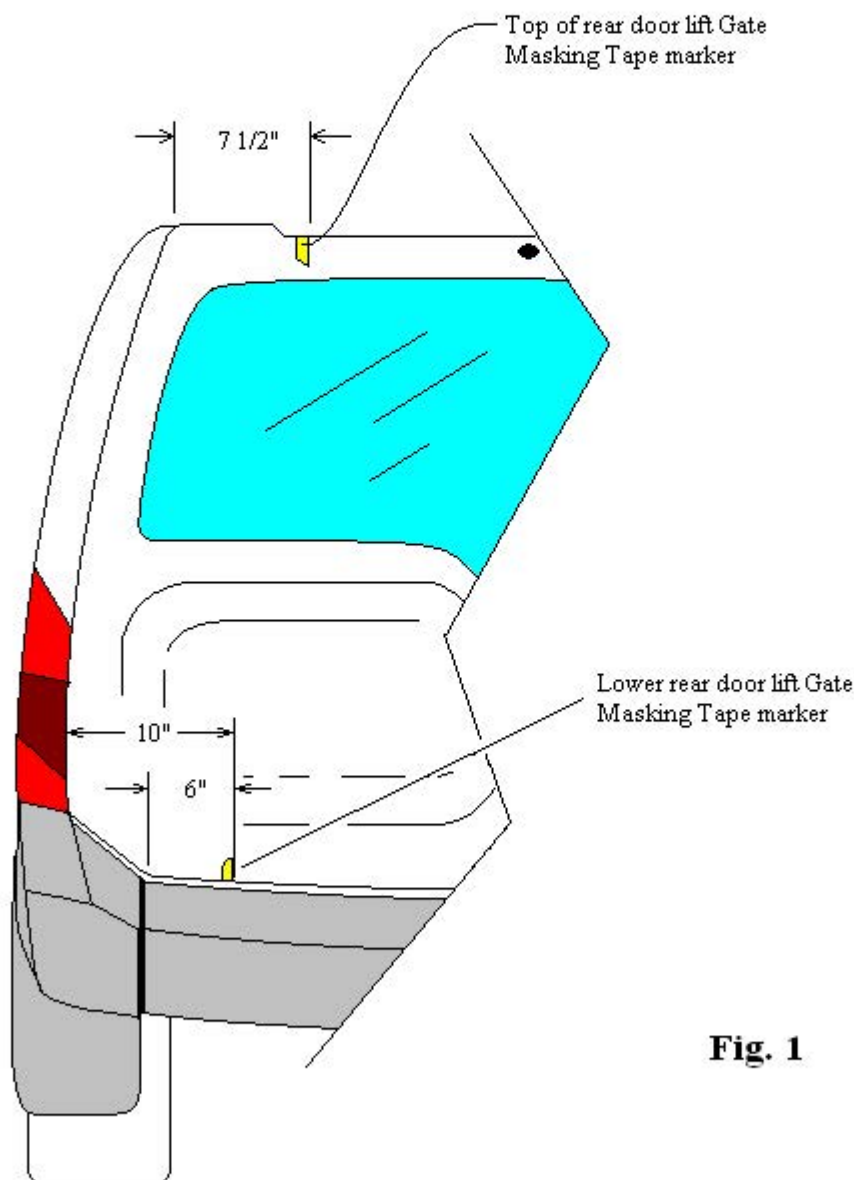
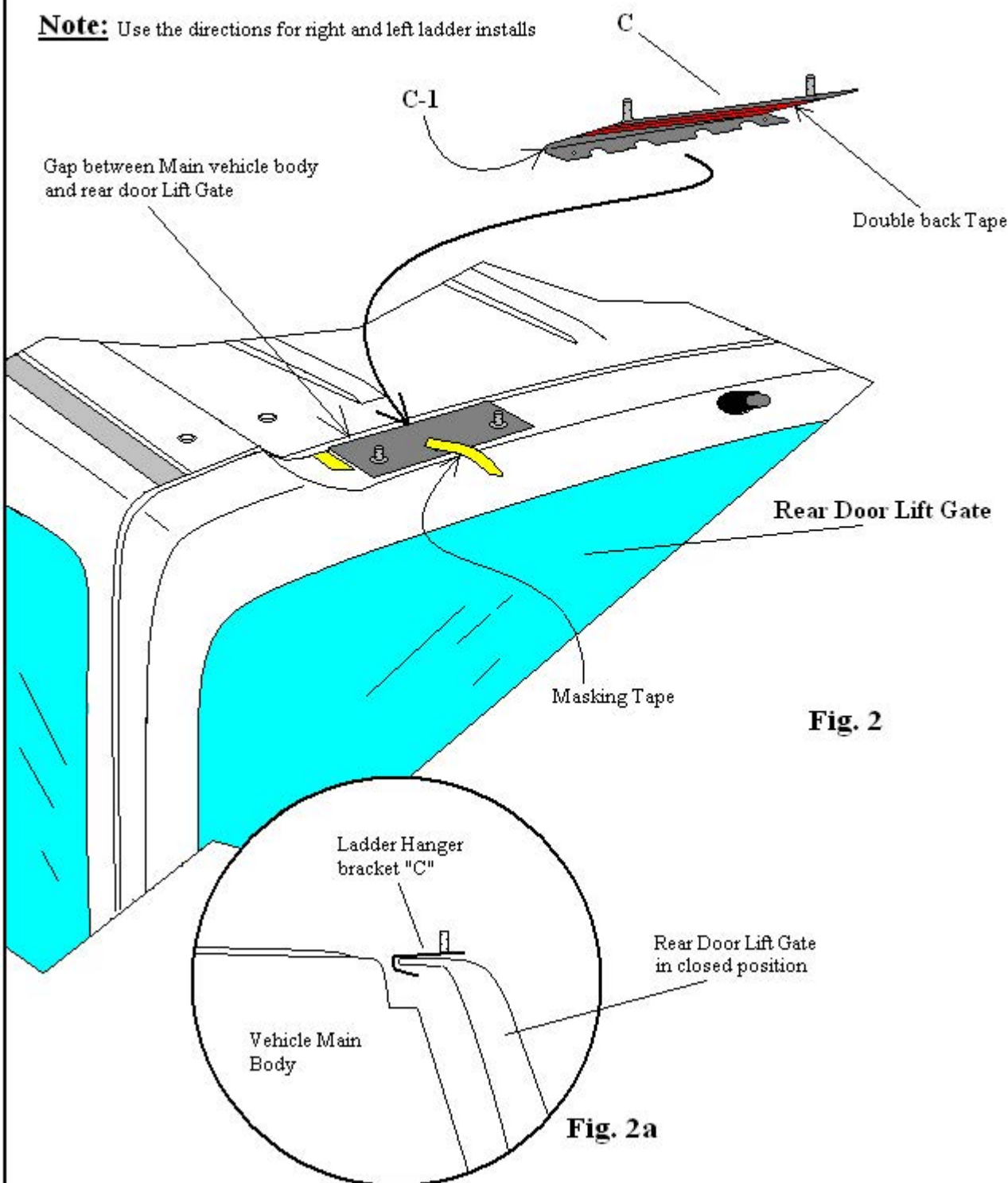


Fig. 1

GOBI NISSAN 05-2015 XTERRA LADDER INSTALLATION INSTRUCTIONS

Note: Use the directions for right and left ladder installs



GOBI NISSAN 05-2015 XTERRA LADDER INSTALLATION INSTRUCTIONS

Note: Use the directions for right and left ladder installs

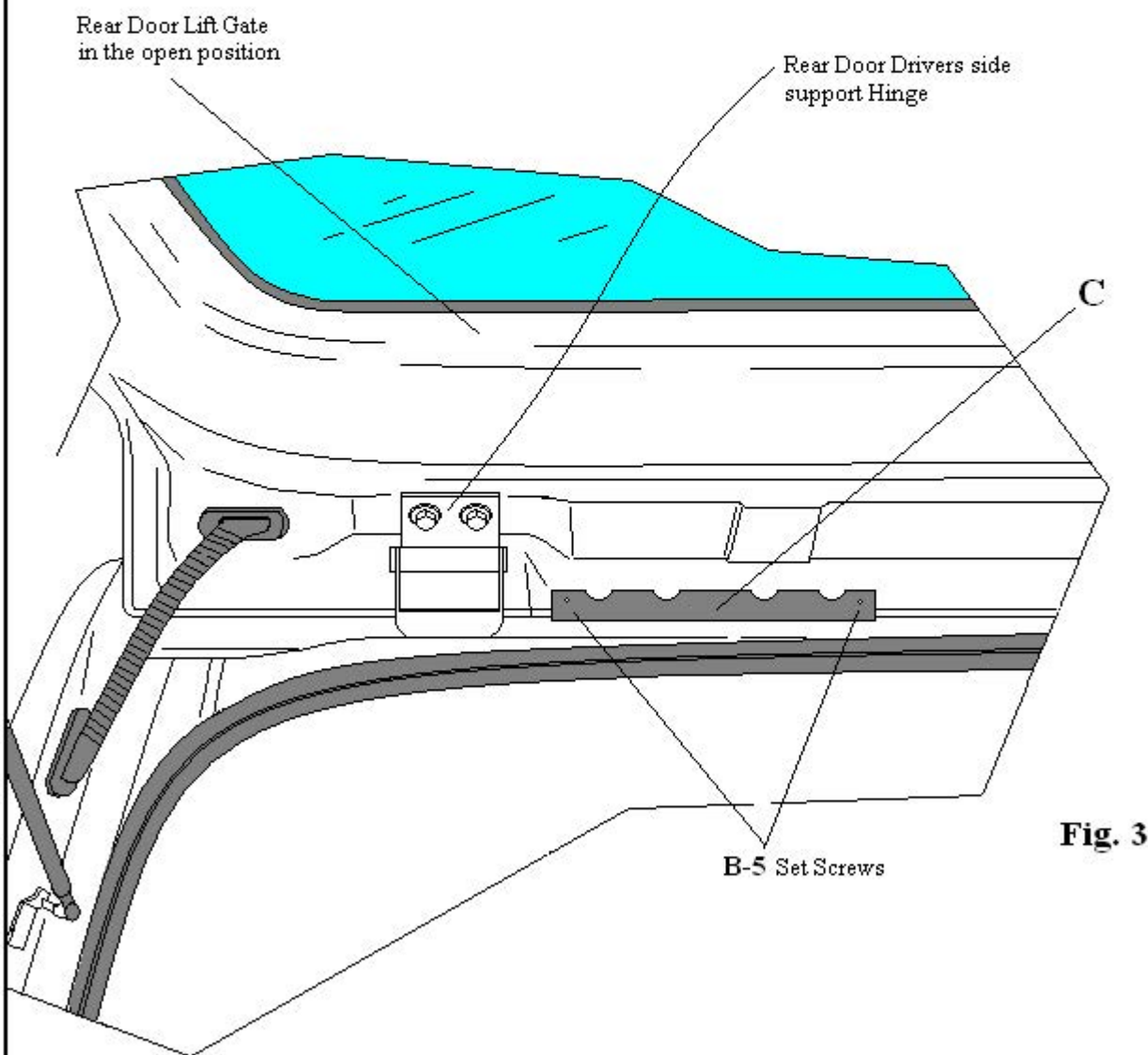


Fig. 3

GOBI NISSAN 05-2015 XTERRA LADDER INSTALLATION INSTRUCTIONS

Note: Use the directions for right and left ladder installs

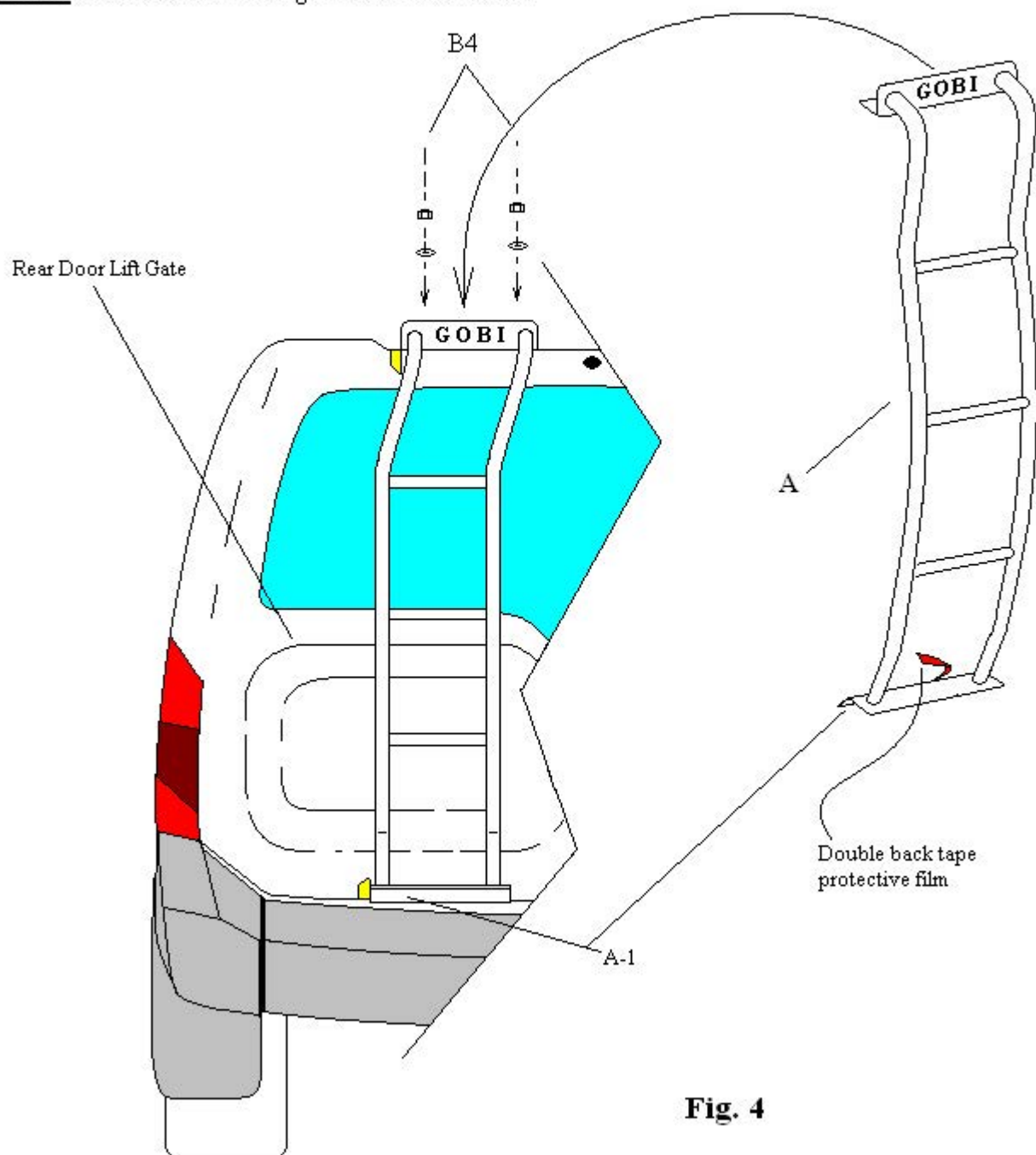
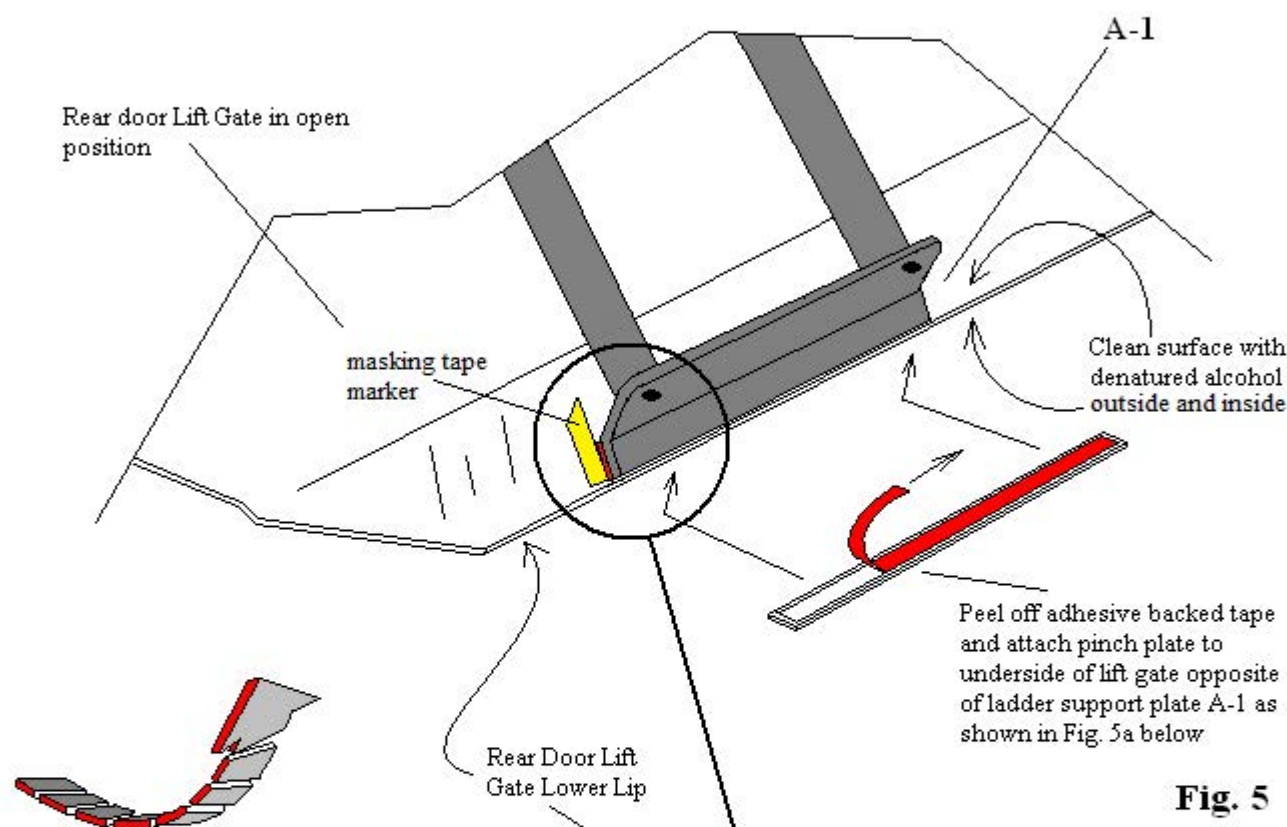


Fig. 4

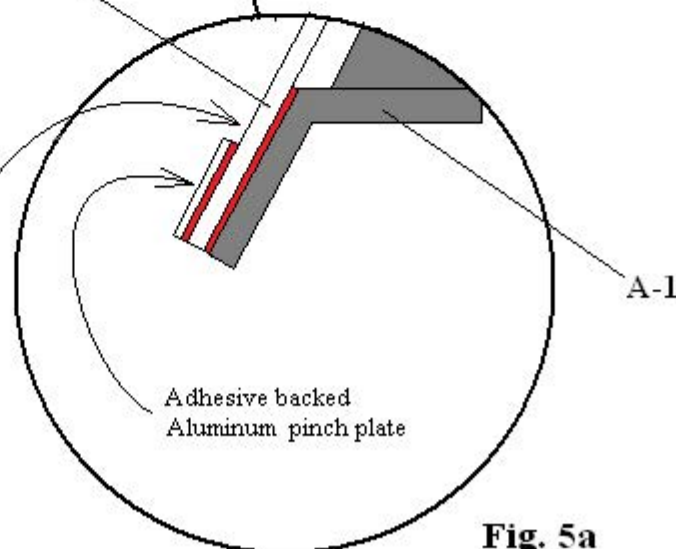
GOBI NISSAN 05-2015 XTERRA LADDER INSTALLATION INSTRUCTIONS

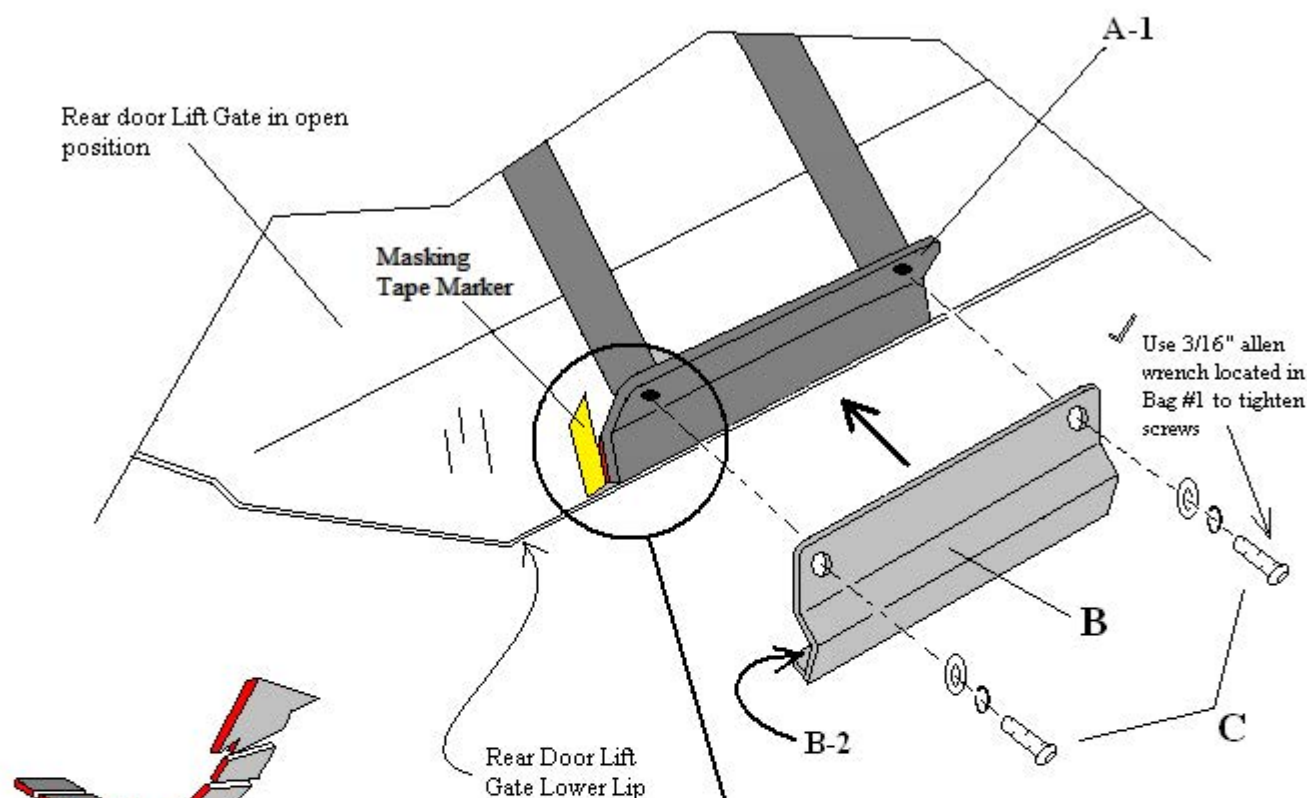
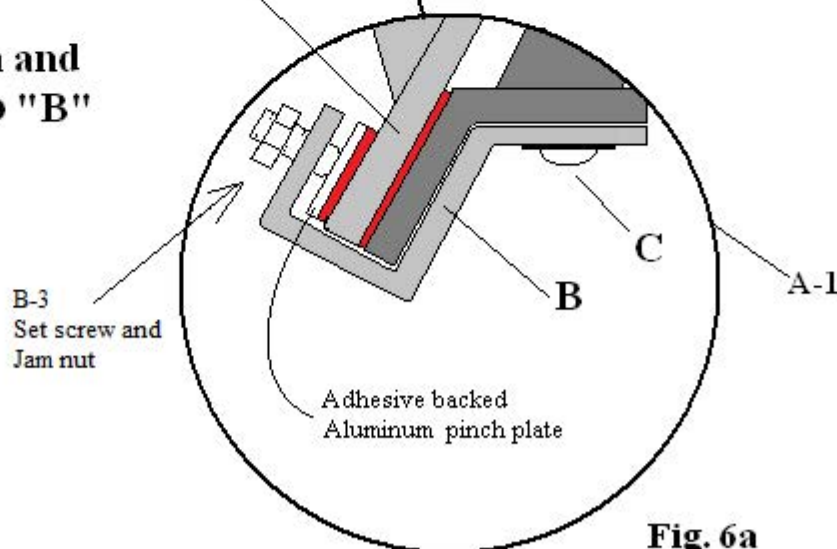
Note: Use the directions for right and left ladder installs



Rear Door Open and Lifted for Clamp "B" installation

Clean the pinch plate contact area with denatured alcohol prior to install.



**GOBI NISSAN 05-2015 XTERRA LADDER
INSTALLATION INSTRUCTIONS****Fig. 6****Rear Door Open and
Lifted for Clamp "B"
installation****Fig. 6a**

GOBI NISSAN 05-2015 XTERRA LADDER INSTALLATION INSTRUCTIONS

The Gobi ladder must be inspected before each use to make certain attachments are secure, and for evidence of Wear. Misuse of the ladder or failure to observe the manufacturer's instructions as to installation, proper Attachment and maintenance will void any warranties that may be implied by law.

INSTALLATION INSTRUCTIONS:

- 1- Prior to installation read all instructions carefully then refer to page 3 and make sure all parts are present before procedure.
- 2- Refer to page 4 using masking tape or the like attach a piece of tape as shown in Fig. 1 at the top of the rear door lift gate approximately 7-1/2" from the top left or drivers side edge. Continue to the bottom of the rear door lift gate and attach a piece of masking tape to the lower edge of the door as shown in Fig. 1 10" from the left side or driver's side door edge.
- 3- Refer to page 3 and remove ladder hanger plate "C" supplied with your parts kit "DO NOT PEEL OFF THE DOUBLE BACK PROTECTIVE FILM AT THIS TIME" carefully slide plate "C" as shown on page 5 Fig. 2 and Fig. 2a between the gap of the upper rear door lift gate and main vehicle body. Once plate "C" has been slipped into the gap align the left edge of the ladder hanger plate "C" with the masking tape mark and pull ladder hanger plate "C" so that the inside edge "C-1" is up against the rear lift gate doors edge as shown in Fig. 2a page 5. Use one or two 2 pieces of masking tape to hold down plate "C" from moving at this time.
- 4- Refer to page 7 Fig. 4 hang ladder "A" temporarily onto hanger plate "C" and align the bottom of the ladder with masking tape marker previously placed at the bottom of the rear door. Visually check that the ladder is hanging vertically straight up and down and make sure your masking tape markers are placed correctly to provide the desired final position. After you have checked your marker tapes remove the ladder and refer back to page 5.
- 5- If needed by the addition of an aftermarket rear bumper with tire swing gate, the ladder can be moved off the masking tape marks by 1-1/2" further to the right if a driver side ladder is used or to the left if a passenger side ladder is used. Make certain if you move the upper masking tape marker that you move the lower marker tape by the equal amount, this will insure the ladder to be vertically true. Continue by removing the ladder hanger plate "C" from the door clean the surface area where the ladder hanger plate is to be attached with denatured alcohol. Peel off the protective double back tape film from hanger plate "C" and refit ladder hanger plate "C" back in place and be sure that the inner edge "C-1" is in full contact with the rear door Lift Gate's upper edge as shown in Fig. 2a. Once in place press down firmly and hold for at least 30 seconds.
- 6- Refer to page 6 Fig. 3 and open the rear door lift gate at this time install two 10-32 x 5/8" SS socket head cap screws "B-5" with a 5/32" Allen wrench located in Bag #1 of your hardware kit into the threaded holes located at the bottom of the ladder hanger plate "C". Completely thread in the screws until the screw head fully contacts ladder hanger plate "C". Close the rear door lift gate at this time.

GOBI NISSAN 05-2015 XTERRA LADDER INSTALLATION INSTRUCTIONS

The Gobi ladder must be inspected before each use to make certain attachments are secure, and for evidence of Wear. Misuse of the ladder or failure to observe the manufacturer's instructions as to installation, proper Attachment and maintenance will void any warranties that may be implied by law.

- 7- Refer to page 3 remove from your hardware kit lower ladder clamp "B". Remove from lower ladder clamp "B" a (1/2" x 10") aluminum pinch plate with double back tape attached and place near the rear door as the pinch plate will be needed shortly. Refer to page 8 Fig. 5 and Fig. 5a clean the area on the inside and outside bottom lower lip of the rear door lift gate where the ladder was previously placed with denatured alcohol then peel off the double back tape from the aluminum pinch plate and attach to the inside door's lower lip as shown in Fig. 5a in line with the lower door masking tape marker.
- 8- Refer to page 9 and remove the two 5/16-18 x 1" button head screws, lock washers and flat washers "C" from the bottom of the ladder using the 3/16" Allen wrench supplied in Bag #1 of your hardware kit and place nearby as they will be needed shortly.
- 9- Refer to Fig. 7 and remove the double back protective film from the bottom of the ladder "A-1" then reinstall ladder "A" back onto the hanger plate "C" as before. As you lower ladder "A" onto the rear door lift gate pull down firmly as you align the lower ladder bracket "A-1" to the masking tape marker previously made. With the help of another person keep lower ladder bracket "A-1" in line with the bottom lower lift gate lip and hold in place for at least 30 seconds.
- 10- Refer to page 9 Fig. 6 and Fig. 6a with the help of another person while still holding the ladder against the lift gate rear door, open lift gate and install clamp "B" to the bottom of ladder bracket "A-1" and rear door lift gate as shown in Fig. 6 and Fig. 6a thread the two 5/16-18 x 1" button head screws, lock washers and flat washers "C" just recently removed back into the bottom of the ladder using the 3/16" Allen wrench and fully tighten at this time. Continue to the inside of clamp "B" as shown in Fig. 6a and fully tighten set screws "B-3" against the aluminum pinch plate using a 1/8" Allen wrench supplied in your kit and finally secure in place by tightening the 1/4" hex nut using a 7/16" box or open end wrench.
- 11- Refer to page 7 Fig. 4 and install washers, lock washers and Nylock nuts "B-4" to the ladder hanger plate "C" threaded studs as shown in Fig. 4 and fully tighten, "DO NOT OVER TIGHTEN". Remove all previously applied masking tape markers. Installation now completed.
- 12- If you should experience a slow lifting of the rear door lift gate with the added ladder weight stronger gas springs are available at www.gobiracks.com.