

GOBI JEEP GRAND CHEROKEE 07 REAR DOOR GAS SPRING INSTALLATION INSTRUCTIONS

Guidelines:

When using Load Carriers and Accessories, the user must understand the precautions. The points listed below will assist you in using the rack /carrier system and will encourage safety.

- For quality fits and safty, use only the recommended rack or accessory. Do not assume an accessory will fit, always check with dealer when obtaining new accessories. Use only approved accessories on load carriers. Using other brands will void your warrenty.
- Make sure all knobs, bolts, screws, straps, and locks are firmly attached, tightened and locked before every trip. Knobs, bolts, screws, straps, and locks must be periodically inspected for signs of wear, corrosion, and fatigue. Check your load at stops during the trip to insure continued fastening security.
- Do not use load carriers and accessories for purposes other than those for which they were designed. Do not exceed their carrying capacity.
- Consult with your dealer if you have any questions regarding the operations and limits of this product. Review all instructions carefully.

GOBI JEEP GRAND CHEROKEE 07 REAR DOOR GAS SPRING INSTALLATION INSTRUCTIONS

READ ALL INSTRUCTIONS CAREFULLY PRIOR TO INSTALL

TOOLS REQUIRED:

- 1- 1/2" deep ratched socket and ratache handle
- 1- #40 Torx bit (supplied with your kit)

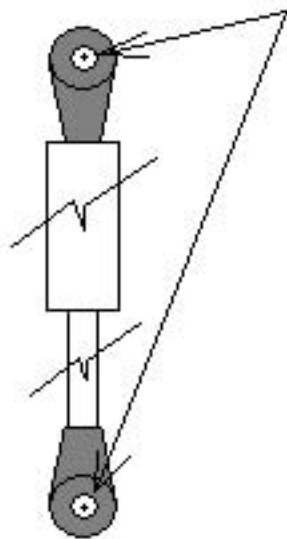
INCLUDED IN KIT:

- 1- #GJGCGS GAS SPRING
- 1- #40 TORX BIT
- 2- M8- BALL STUDS

"CAUTION" Two persons are required for the installation of 1 or both rear door gas springs.

Step 1

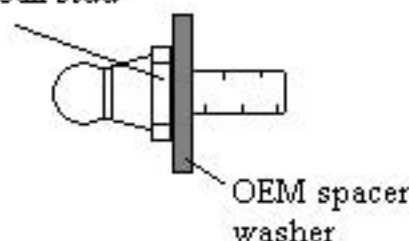
Remove OEM
Gas spring screws
with #40 Torx bit



- 1- Open the rear door lift gate to its fullest height at this time. While one person holds up the rear door use the #40 Torx bit supplied with your kit which can be placed into a 1/4" ratchet socket and remove the upper screw from the driver's side Gas spring. Continue by removing the lower screw removing the entire Gas spring.
- 2- Take off both heavy spacer washers from the Original Gas springs just removed and place them under the new Ball studs supplied with your kit. Thread each ball stud into each hole where the original Gas spring was removed using the 1/2" deep ratchet socket. Completely tighten both ball studs into each threaded hole "Do not over tighten".

Step 2

Use 1/2" deep
socket to install
new ball stud



- 3- Remove the safety clip from both ends of your new Gas spring then with the polished piston rod facing down place the first connector end onto the stud at the lower end or on the body of the vehicle. After you have snapped the connector end of the gas spring onto the lower stud place the safety clip back in place and be sure it is in place correctly. Continue by snapping the upper end of the Gas spring onto the lift gate door stud then place the safety clip back in place. Installation is now complete.