

GOBI 5' HUMMER H3 ROOF RACK INSTALLATION INSTRUCTIONS

Guidelines:

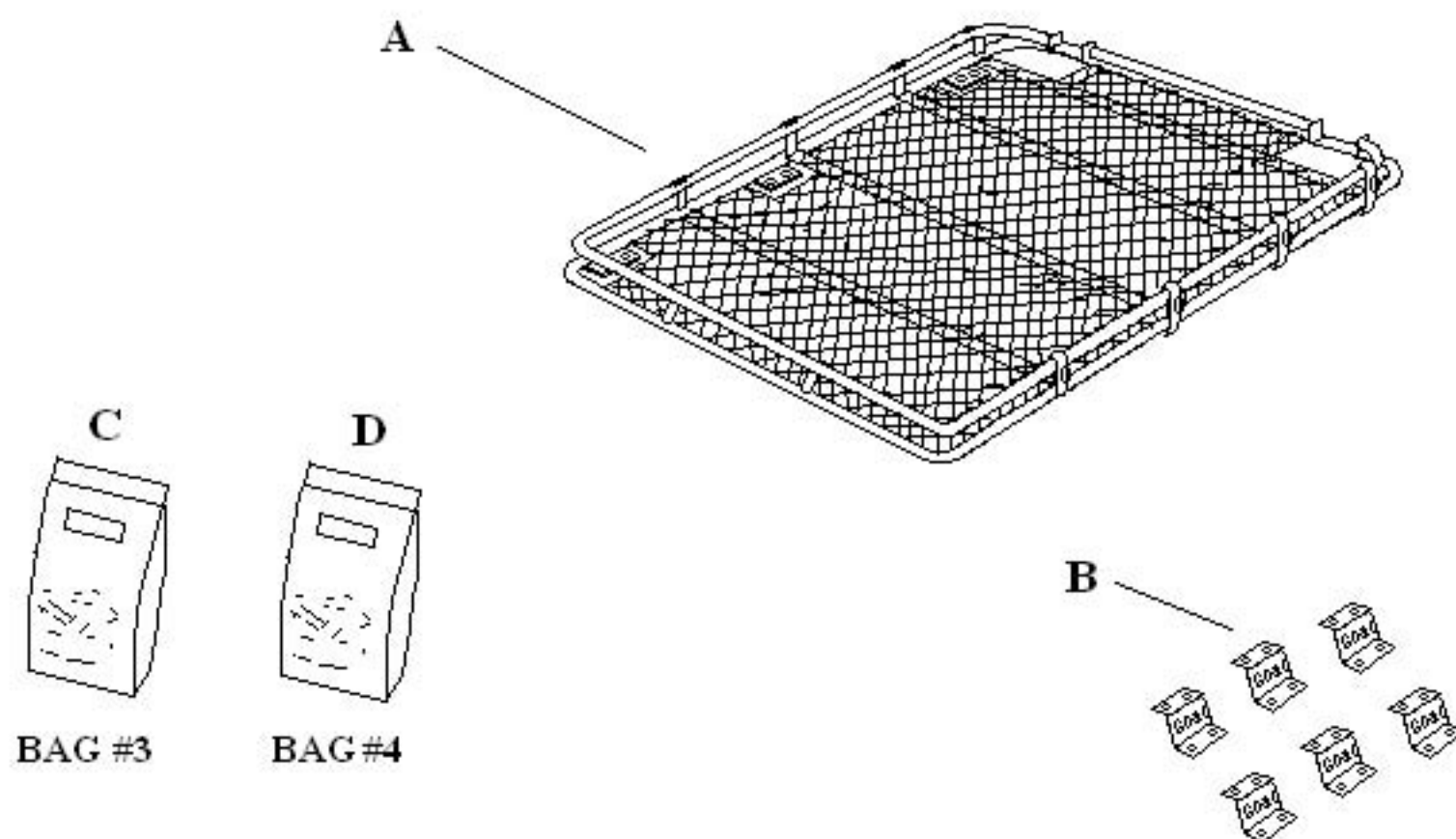
When using Load Carriers and Accessories, the user must understand the precautions. The points listed below will assist you in using the rack /carrier system and will encourage safety.

- For quality fits and safty, use only the recommended rack or accessory. Do not assume an accessory will fit, always check with dealer when obtaining new accessories. Use only approved accessories on load carriers. Using other brands will void your warrenty.
- Make sure all knobs, bolts, screws, straps, and locks are firmly attached, tightened and locked before every trip. Knobs, bolts, screws, straps, and locks must be periodically inspected for signs of wear, corrosion, and fatigue. Check your load at stops during the trip to insure continued fastening security.
- Check local and state laws governing projection of objects beyound the width of a vehicle. **Be aware of the width and height of your cargo since low clearance branches, bridges, and parking garages can affect the load** All cargo will affect the vehicle's driving behavior. Never drive with any lock, know, or rack in an open or unlocked position. All long loads such as, but not limited to sailboards, surfboards, kayaks, canoes, and lumber must be tied down front and rear to the bumpers or tow hooks, of the vehicle.
- Remove your rack accessories when they are not in use, before intering car washes, prior to taking in your vehicle for service, and whenever clearance may be an issue.
- All locks must be turned and moved periodically to insure smooth operation. Use graphite or similar dry lubricant to help this. Locks are designed to deter vandalism and theft. Remove valuable gear if your vehicle is unattended for an extended period. Place at least one key in the glove compartment.
- For safety to your vehicle and rack system, obey all posted speed limits and traffic cautions. Adapt your speed to the conditions of the road and the load being carried.
- Do not use load carriers and accessories for purposes other than those for which they were designed. Do not exceed their carrying capacity.
- Consult with your dealer if you have any questions regarding the operations and limits of this product. Review all instructions carefully.

GOBI 5' HUMMER H3 ROOF RACK INSTALLATION INSTRUCTIONS

Included in kit

Letter	Description	Location	Quantity
A	GOBI HUMMER H3 5' ROOF RACK	Main box	1
B	GOBI SUPPORT BRACKETS	Hardware Box	6
C	GOBI SUPPORT BRACKET HARDWARE CONTENTS: 6- "T" nut black zinc plated 12- 5/16"-18 x 1" Stainless button head screw 12- 5/16" Stainless washer 12- 5/16" Stainless lock washer 6- Rubber pad black 1- 3/16" allen wrench	BAG #3 Hardware Box	1
D	GOBI SUPPORT BRACKET HARDWARE CONTENTS: 12- 3/8"-16 x 1" Stainless bolt 24 3/8" Stainless washer 12- 3/8" Nylock nuts 6- Rubber pad black	BAG #4 Hardware Box	1



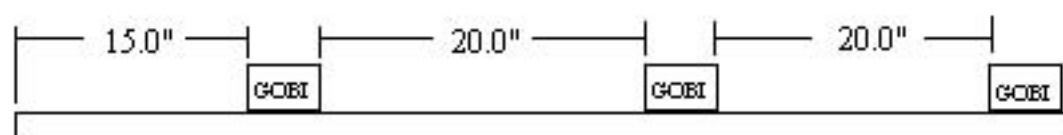
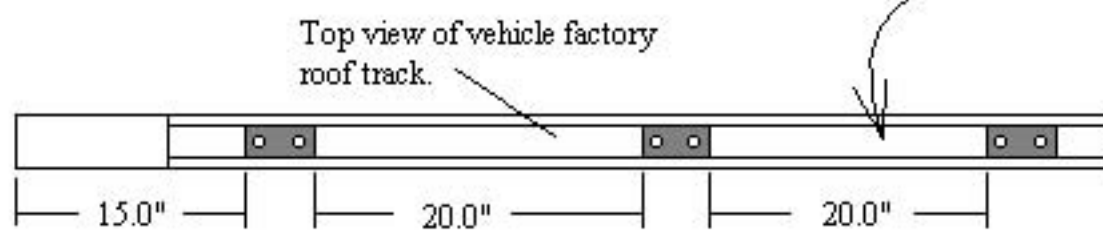
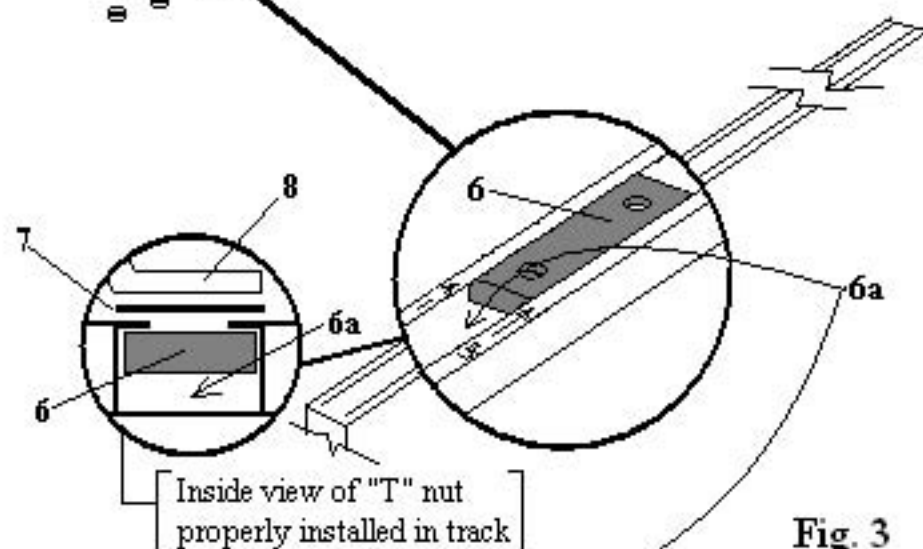
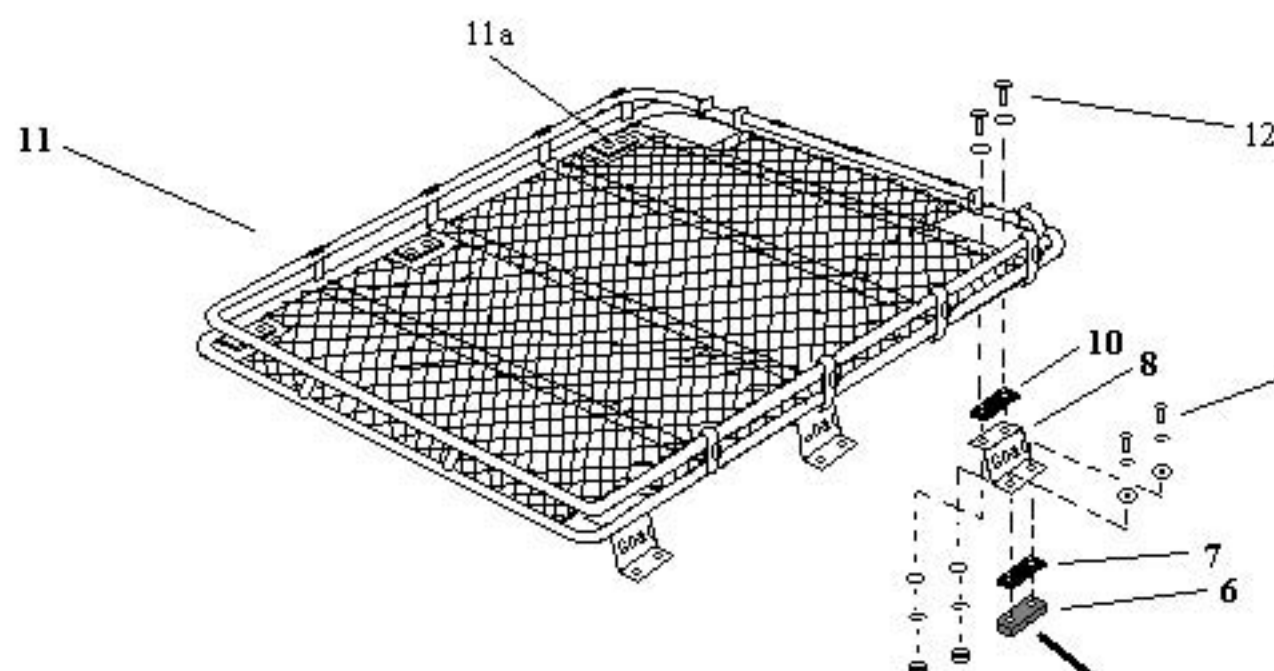
GOBI 5' HUMMER H3 ROOF RACK INSTALLATION INSTRUCTIONS

The rack must be inspected before each use to make certain attachments are secure, and for evidence of Wear. Misuse of the rack or failure to observe the manufacturer's instructions as to installation, proper Attachment and maintenance will void any warranties that may be implied by law.

INSTALLATION INSTRUCTIONS:

- 1- Using the hardware list on page 2 of the Gobi instruction manual check to verify that all hardware is present prior to installation.
- 2- Remove Factory (OEM) cross bars at this time they are no longer needed.
- 3- Remove "T" nuts from **plastic bag labeled #3** then as shown on page 4 Fig. 2, 3 and 4 install all 6 "T" nuts into the Hummer H3 roof track #6a and space apart as dimensioned in Fig. 2. Place above each "T" nut on top of OEM factory roof track rubber pad #7 as shown on page 4 Fig. 3. Using the 5/16" button head screws, washers and lock washers #9 Fig. 4 located in bag #3, attach all 6 Gobi support brackets #8 Fig. 4 with attached labels "REAR" facing up onto the rubber pads #7 previously installed then through "T" nuts as shown on page 4 Fig. 3 and 4. Finger tighten at this time using the 3/16" allen wrench supplied in bag #3.
- 4- Place the Gobi roof rack #11 page 4 Fig. 4 onto the 6 previously installed Gobi support brackets #8. Take "CAUTION" while lifting the Gobi rack onto the vehicle roof top use at least 2 persons. Align the Gobi roof rack's welded in brackets #11a page 4 Fig. 4 to previously attached Gobi support brackets #8. Slip in between each of the Gobi roof rack's welded in brackets #11a and Gobi support bracket #8 rubber pad #10 supplied in bag #4 as shown on page 4 Fig. 4. Remove the 3/8" bolts, washers and nuts from **plastic bag #4** shown on page 4 Fig. 4 #12 and place the bolts through both the Gobi roof rack welded in brackets #11a and support brackets #8. After all the bolts and nuts have been fully installed begin to fully tighten all Gobi support brackets #8 to vehicle roof track using the 3/16" allen wrench supplied in plastic bag #3. Do not over tighten. Fully tighten the remaining #12 nuts and bolts page 4 Fig. 4 completely. Installation is completed.

GOBI 5' HUMMER H3 ROOF RACK INSTALLATION INSTRUCTIONS



← VEHICLE FRONT